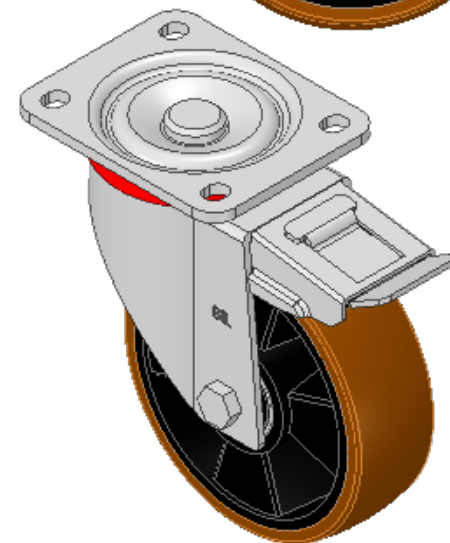
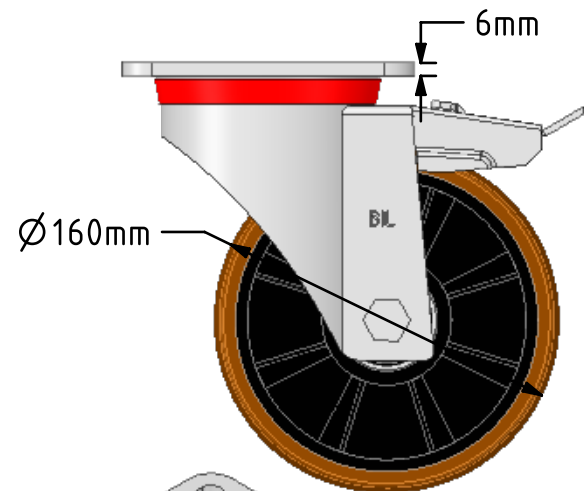
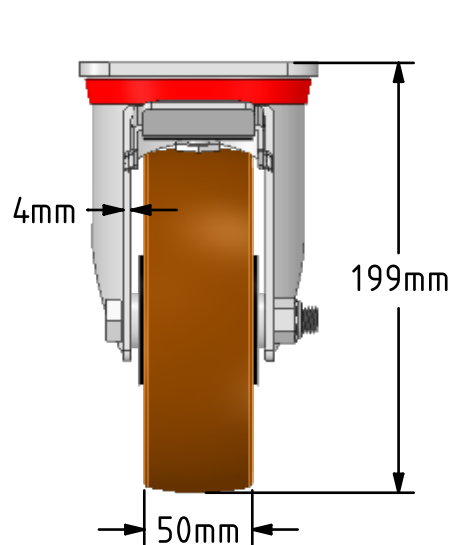
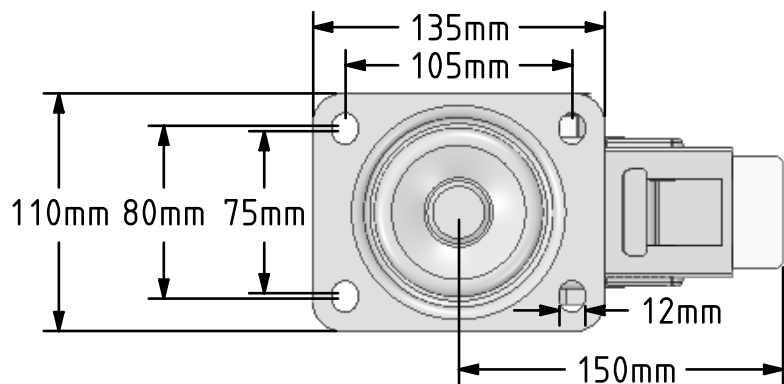


DRAWING DISCLAIMER  
 COPYRIGHT OF THIS DRAWING IS RESERVED BY BIL GROUP LTD. IT IS ISSUED ON CONDITION THAT IT IS NOT REPRODUCED, COPIED, OR DISCLOSED TO A THIRD PARTY EITHER WHOLLY OR IN PART WITHOUT THE CONSENT IN WRITING OF BIL GROUP LTD.



Description:  
 BZP160XPNBJSWB

Pressed steel swivel castor with a flat plate fixing fitted with a brown polyurethane tyre on black nylon centred wheel with ball bearings and a total lock brake. Wheel diameter 160mm, tread width 50mm, overall height 199mm, plate size 135mm x 100mm, hole centres 105mm x 80mm. Load capacity 600kg.



	NAME	DATE
DRAWN	Matt	21/02/19
APPROVED BY	Tim W	21/02/19
SCALE	2:7	21/02/19
WEIGHT	3.269kg	21/02/19

UNLESS OTHERWISE SPECIFIED DIMENSIONS ARE IN MILLIMETRES

Unspecified Tolerances  
 Machining ± 0.25mm  
 Fabrication ± 1mm



BIL Group Ltd, Porte Marsh Road, Calne  
 Wiltshire, SN11 9BW, United Kingdom  
 Tel +44 (0)1249 822 222 Fax: +44 (0)1249 822 300  
 www.bilgroup.co.uk

TITLE

BZP160XPNBJSWB

SIZE	DWG NO.	REV
A4	BILCW03BZP160XPNBJSWB_01	1

FILE NAME BILCW03BZP160XPNBJSWB\_01.PDF SHEET 1 OF 1