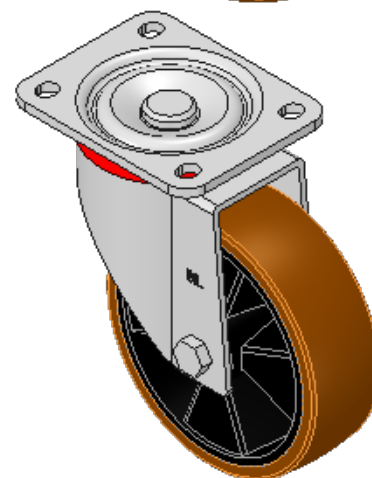
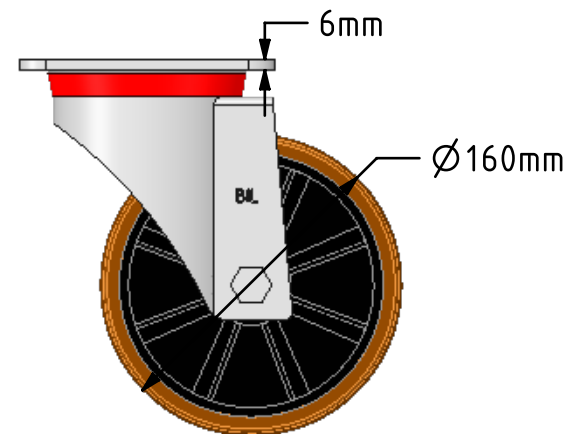
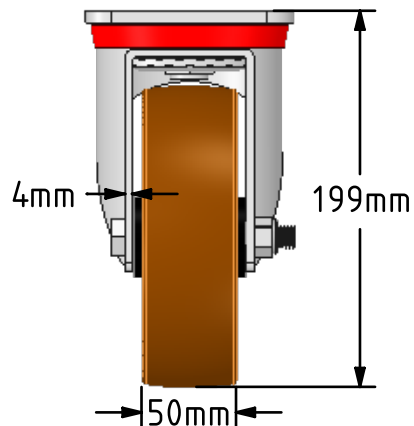
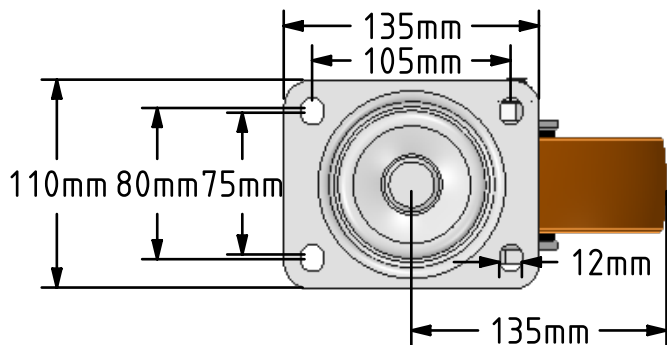
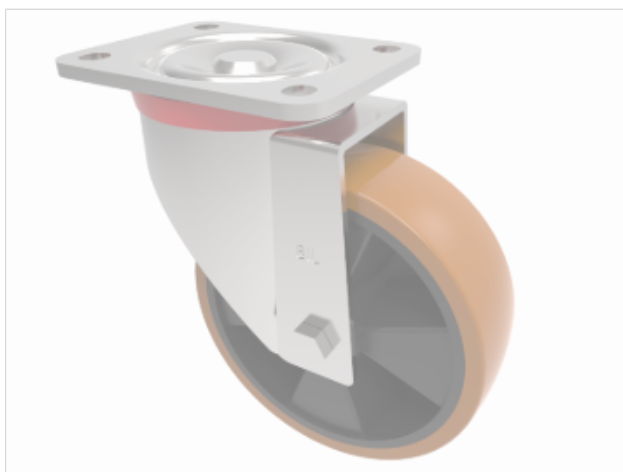


DRAWING DISCLAIMER
 COPYRIGHT OF THIS DRAWING IS RESERVED BY BIL GROUP LTD. IT IS ISSUED ON CONDITION THAT IT IS NOT REPRODUCED, COPIED, OR DISCLOSED TO A THIRD PARTY EITHER WHOLLY OR IN PART WITHOUT THE CONSENT IN WRITING OF BIL GROUP LTD.



Description:
 BZP160XPNB

Pressed steel swivel castor with a flat plate fixing fitted with a brown polyurethane tyre on black nylon centred wheel with roller bearings. Wheel diameter 160mm, tread width 50mm, overall height 199mm, plate size 135mm x 110mm, hole centres 105mm x 80mm. Load capacity 700kg.



| | NAME | DATE |
|-------------|---------|----------|
| DRAWN | Matt | 31/01/18 |
| APPROVED BY | Tim W | 31/01/18 |
| SCALE | 1:4 | 31/01/18 |
| WEIGHT | 2.834kg | 31/01/18 |

UNLESS OTHERWISE SPECIFIED DIMENSIONS ARE IN MILLIMETRES

Unspecified Tolerances
 Machining ± 0.25mm
 Fabrication ± 1mm



BIL Group Ltd, Porte Marsh Road, Calne
 Wiltshire, SN11 9BW, United Kingdom
 Tel +44 (0)1249 822 222 Fax: +44 (0)1249 822 300
 www.bilgroup.co.uk

TITLE

BZP160XPNB

| SIZE | DWG NO. | REV |
|------|----------------------|-----|
| A4 | BILCW03BZP160XPNB_01 | 1 |

FILE NAME BILCW03BZP160XPNB_01.PDF SHEET 1 OF 1