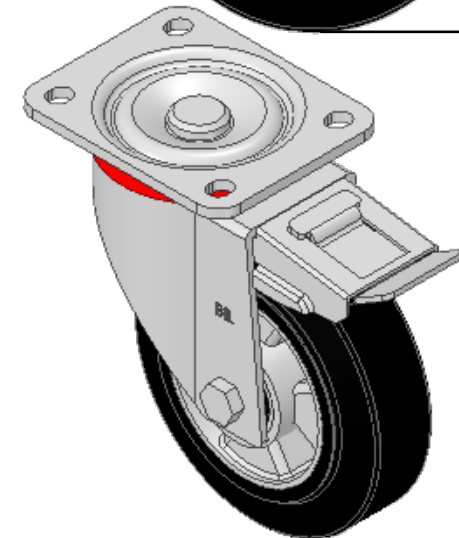
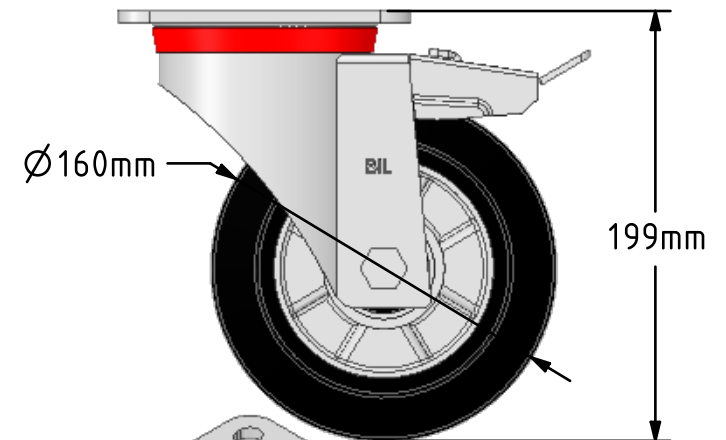
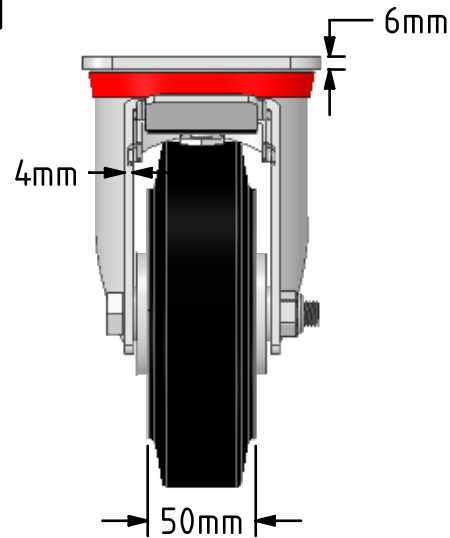
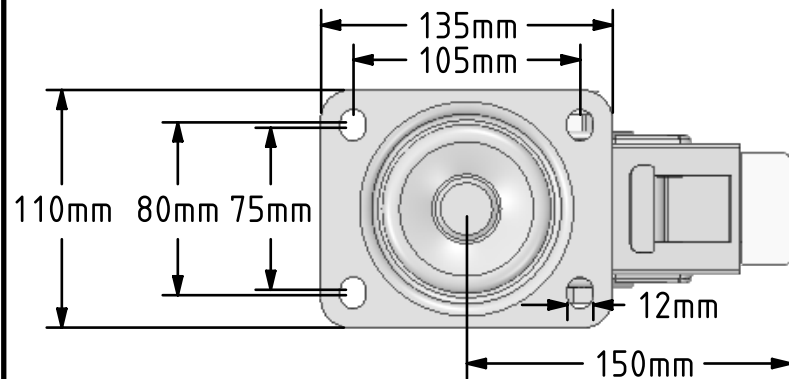


DRAWING DISCLAIMER

COPYRIGHT OF THIS DRAWING IS RESERVED BY BIL GROUP LTD. IT IS ISSUED ON CONDITION THAT IT IS NOT REPRODUCED, COPIED, OR DISCLOSED TO A THIRD PARTY EITHER WHOLLY OR IN PART WITHOUT THE CONSENT IN WRITING OF BIL GROUP LTD.

**Description:**
BZP160ERBJSWB

Pressed steel swivel castor with a top plate fixing fitted with a black high elastic natural 65 shore A rubber tyre on aluminium centred wheel with ball bearings and swivel wheel brake. Wheel diameter 160mm, tread width 50mm, overall height 199mm, plate size 135mm x 110mm, hole centres 105mm x 80/75mm. Load capacity 400kg. REACH compliant also PAH-Free rubber to confirm to EU-directive 2005/69/EC



	NAME	DATE
DRAWN	Matt	30/01/19
APPROVED BY	Chris	30/01/19
SCALE	2:7	30/01/19
WEIGHT	3.59kg	30/01/19

UNLESS OTHERWISE SPECIFIED DIMENSIONS ARE IN MILLIMETRES

Unspecified Tolerances
Machining $\pm 0.25\text{mm}$
Fabrication $\pm 1\text{mm}$



BIL Group Ltd, Porte Marsh Road, Calne
Wiltshire, SN11 9BW, United Kingdom
Tel +44 (0)1249 822 222 Fax: +44 (0)1249 822 300
www.bilgroup.co.uk

TITLE

BZP160ERBJSWB

SIZE DWG NO.

A4

BILCW03BZP160ERBJSWB_01

REV

1

FILE NAME BILCW03BZP160ERBJSWB_01.PDF

SHEET 1 OF 1