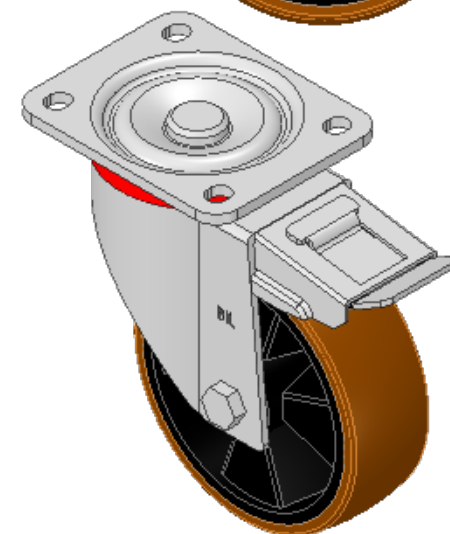
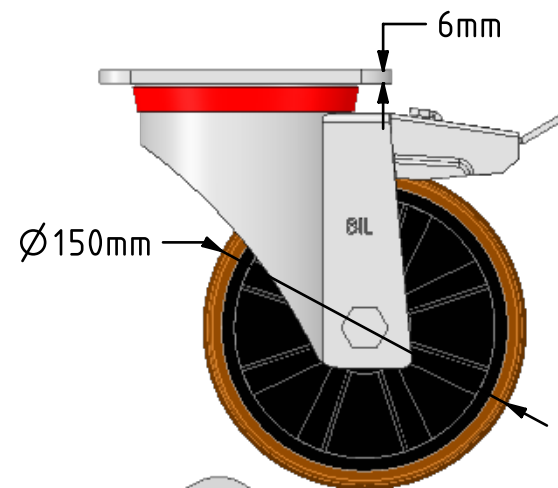
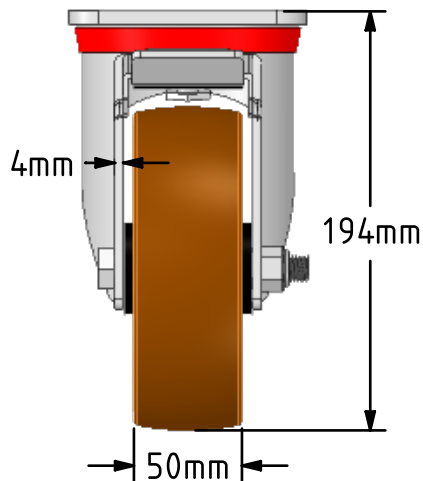
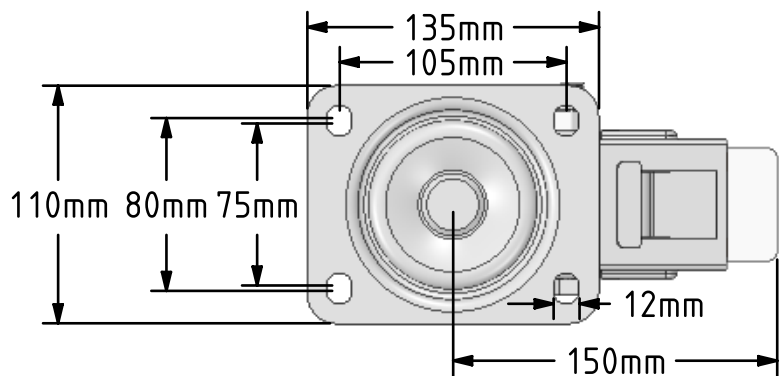


DRAWING DISCLAIMER
 COPYRIGHT OF THIS DRAWING IS RESERVED BY BIL GROUP LTD. IT IS ISSUED ON CONDITION THAT IT IS NOT REPRODUCED, COPIED, OR DISCLOSED TO A THIRD PARTY EITHER WHOLLY OR IN PART WITHOUT THE CONSENT IN WRITING OF BIL GROUP LTD.



Description:
 BZP150XPNSWB

Pressed steel swivel castor with a flat plate fixing fitted with a brown polyurethane tyre on black nylon centred wheel with roller bearings and a total lock brake. Wheel diameter 150mm, tread width 50mm, overall height 194mm, plate size 135mm x 110mm, hole centres 105mm x 80mm. Load capacity 600kg.



	NAME	DATE
DRAWN	Matt	20/02/19
APPROVED BY	Tim W	20/02/19
SCALE	2:7	20/02/19
WEIGHT	3.074kg	20/02/19

BIL Group Ltd, Porte Marsh Road, Calne
 Wiltshire, SN11 9BW, United Kingdom
 Tel +44 (0)1249 822 222 Fax: +44 (0)1249 822 300
 www.bilgroup.co.uk

TITLE	BZP150XPNSWB	
-------	---------------------	--

UNLESS OTHERWISE SPECIFIED DIMENSIONS ARE IN MILLIMETRES
 Unspecified Tolerances
 Machining ± 0.25mm
 Fabrication ± 1mm

SIZE	DWG NO.	REV
A4	BILCW03BZP150XPNSWB_01	1
FILE NAME	BILCW03BZP150XPNSWB_01.PDF SHEET 1 OF 1	