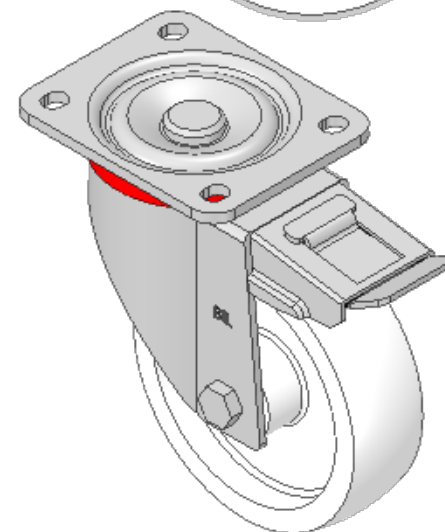
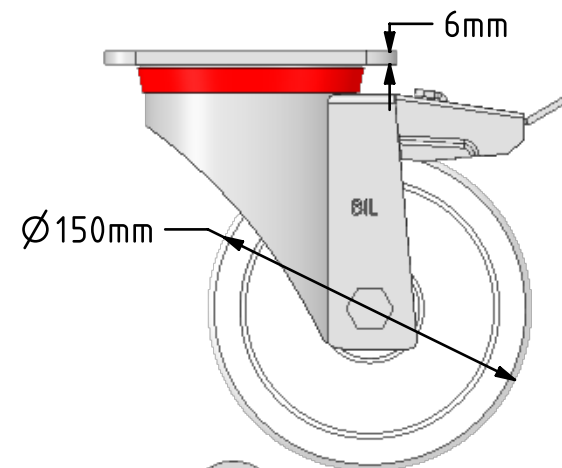
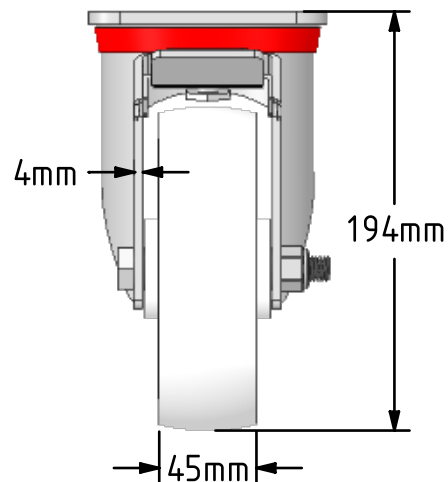
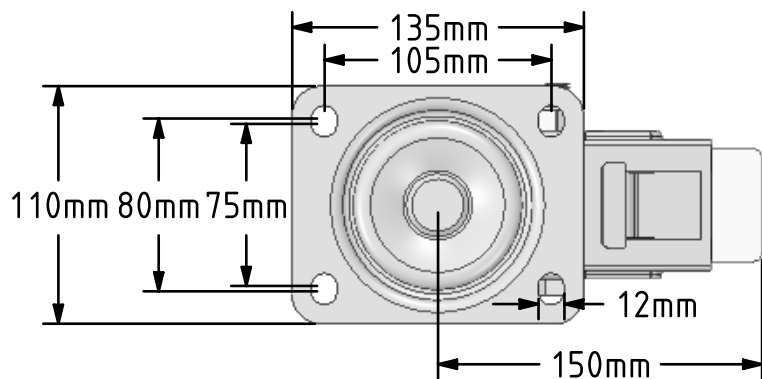
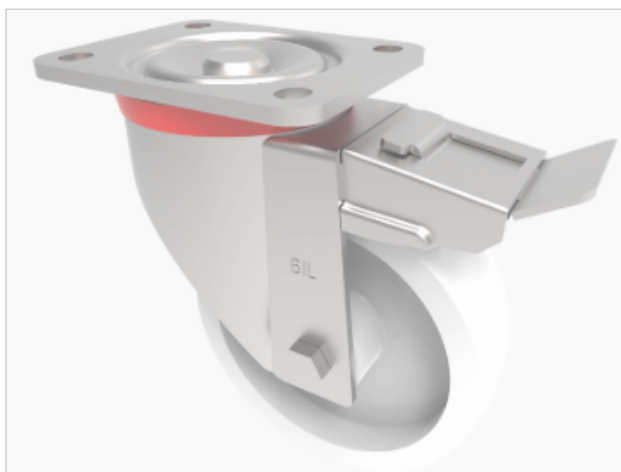


DRAWING DISCLAIMER
 COPYRIGHT OF THIS DRAWING IS RESERVED BY BIL GROUP LTD. IT IS ISSUED ON CONDITION THAT IT IS NOT REPRODUCED, COPIED, OR DISCLOSED TO A THIRD PARTY EITHER WHOLLY OR IN PART WITHOUT THE CONSENT IN WRITING OF BIL GROUP LTD.



Description:
 BZP150NYBSWB

Pressed steel swivel castor with a top plate fixing fitted with a white nylon wheel with roller bearing and swivel wheel brake. Wheel diameter 150mm, tread width 45mm, overall height 194mm, plate size 135mm x 110mm, hole centres 105mm x 80/75mm. Load capacity 800kg.



	NAME	DATE
DRAWN	Matt	08/01/19
APPROVED BY	Tim W	08/01/19
SCALE	2:7	08/01/19
WEIGHT	2.964kg	08/01/19

UNLESS OTHERWISE SPECIFIED DIMENSIONS ARE IN MILLIMETRES

Unspecified Tolerances
 Machining ± 0.25mm
 Fabrication ± 1mm



BIL Group Ltd, Porte Marsh Road, Calne
 Wiltshire, SN11 9BW, United Kingdom
 Tel +44 (0)1249 822 222 Fax: +44 (0)1249 822 300
 www.bilgroup.co.uk

TITLE

BZP150NYBSWB

SIZE A4

DWG NO. BILCW03BZP150NYBSWB_01

REV 1

FILE NAME BILCW03BZP150NYBSWB_01.PDF SHEET 1 OF 1