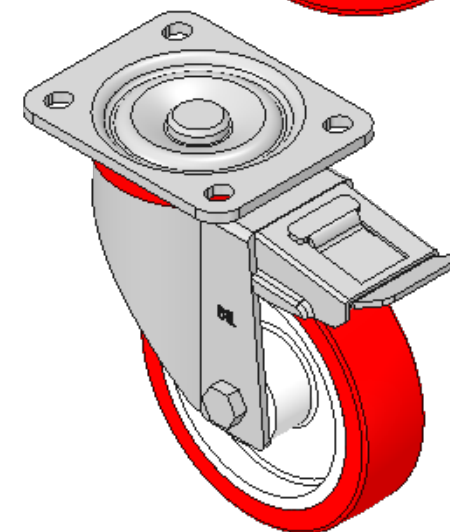
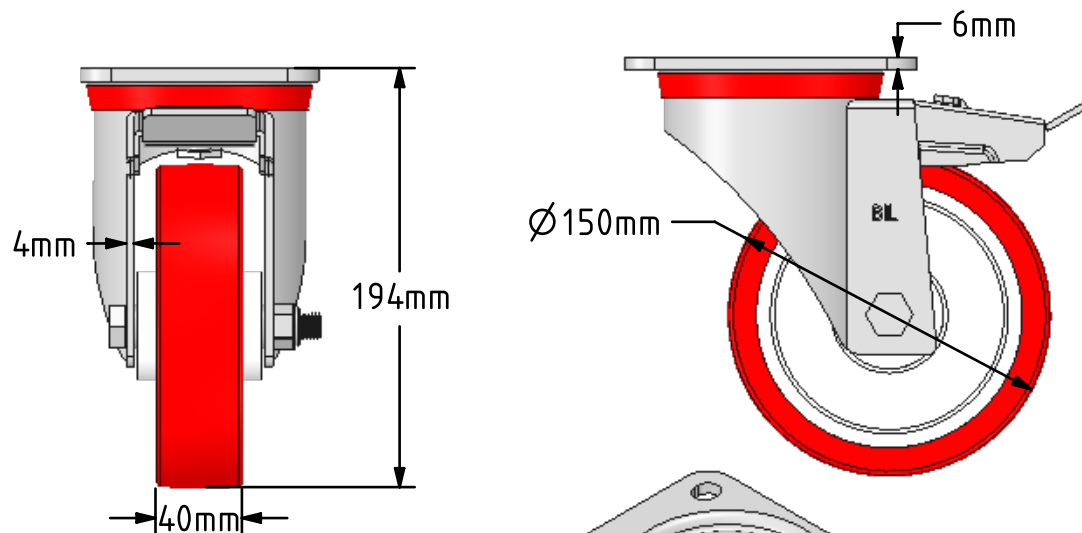
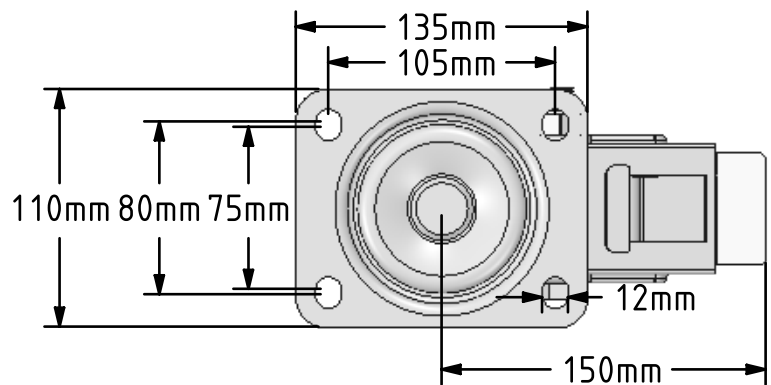


DRAWING DISCLAIMER  
 COPYRIGHT OF THIS DRAWING IS RESERVED BY BIL GROUP LTD. IT IS ISSUED ON CONDITION THAT IT IS NOT REPRODUCED, COPIED, OR DISCLOSED TO A THIRD PARTY EITHER WHOLLY OR IN PART WITHOUT THE CONSENT IN WRITING OF BIL GROUP LTD.



Description:  
 BZP150NPBSWB

Pressed steel swivel castor with a top plate fixing fitted with a red polyurethane treaded white nylon centred wheel with roller bearings and total lock brakes. Wheel diameter 150mm, tread width 40mm, overall height 194mm, top plate 135mm x 110mm, hole centres 105mm x 80mm. Load capacity 500kg.



	NAME	DATE
DRAWN	Matt	22/02/18
APPROVED BY	Tim W	22/02/18
SCALE	2:7	22/02/18
WEIGHT	3.001kg	22/02/18

UNLESS OTHERWISE SPECIFIED DIMENSIONS ARE IN MILLIMETRES

Unspecified Tolerances  
 Machining ± 0.25mm  
 Fabrication ± 1mm



BIL Group Ltd, Porte Marsh Road, Calne  
 Wiltshire, SN11 9BW, United Kingdom  
 Tel +44 (0)1249 822 222 Fax: +44 (0)1249 822 300  
 www.bilgroup.co.uk

TITLE

BZP150NPBSWB

SIZE	DWG NO.	REV
A4	BILCW03BZP150NPBSWB_02	2

FILE NAME BILCW03BZP150NPBSWB\_02.PDF SHEET 1 OF 1