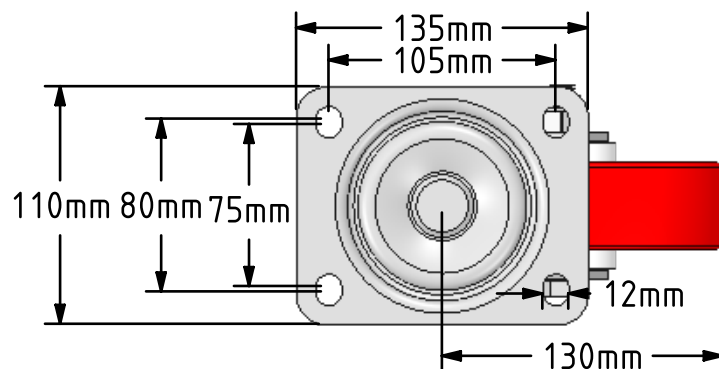


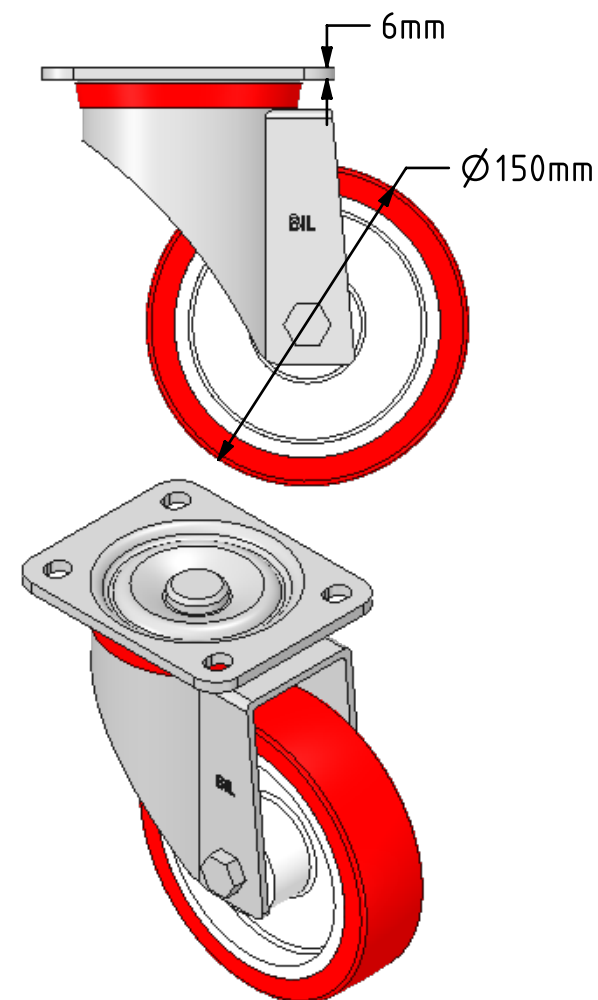
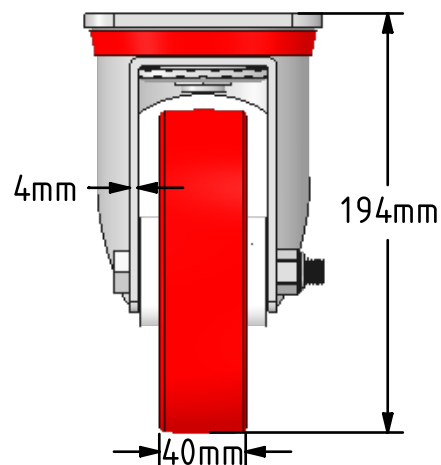
DRAWING DISCLAIMER


COPYRIGHT OF THIS DRAWING IS RESERVED BY BIL GROUP LTD. IT IS ISSUED ON CONDITION THAT IT IS NOT REPRODUCED, COPIED, OR DISCLOSED TO A THIRD PARTY EITHER WHOLLY OR IN PART WITHOUT THE CONSENT IN WRITING OF BIL GROUP LTD.

**Description:**

BZP150NPB

Pressed steel swivel castor with a top plate fixing fitted with a red polyurethane treaded white nylon centred wheel with roller bearings. Wheel diameter 150mm, tread width 40mm, overall height 194mm, top plate 135mm x 110mm, hole centres 105mm x 80mm. Load capacity 500kg.



	NAME	DATE	 <div>BIL Group Ltd, Porte Marsh Road, Calne Wiltshire, SN11 9BW, United Kingdom Tel +44 (0)1249 822 222 Fax: +44 (0)1249 822 300 www.bilgroup.co.uk</div>		
DRAWN	Matt	22/02/18			
APPROVED BY	Tim W	22/02/18			
SCALE	2:1	22/02/18			
WEIGHT	2.71kg	22/02/18			
UNLESS OTHERWISE SPECIFIED DIMENSIONS ARE IN MILLIMETRES Unspecified Tolerances Machining ± 0.25mm Fabrication ± 1mm			TITLE		
			BZP150NPB		
			SIZE	DWG NO.	REV
			A4	BILCW03BZP150NPB_01	1
			FILE NAME	BILCW03BZP150NPB_01.PDF	
			SHEET 1 OF 1		