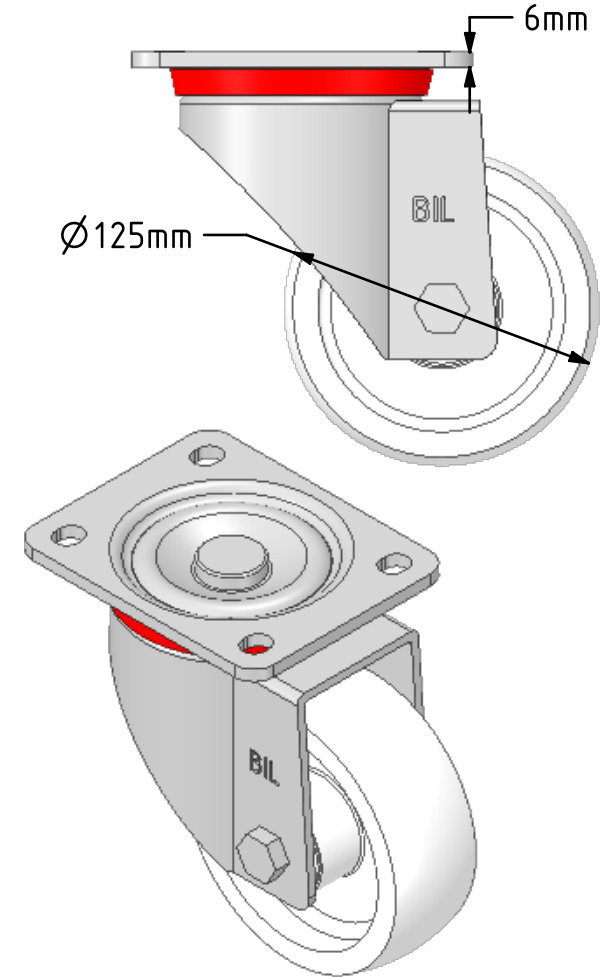
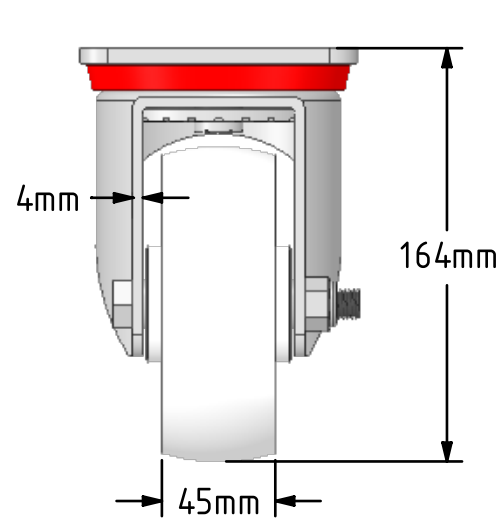
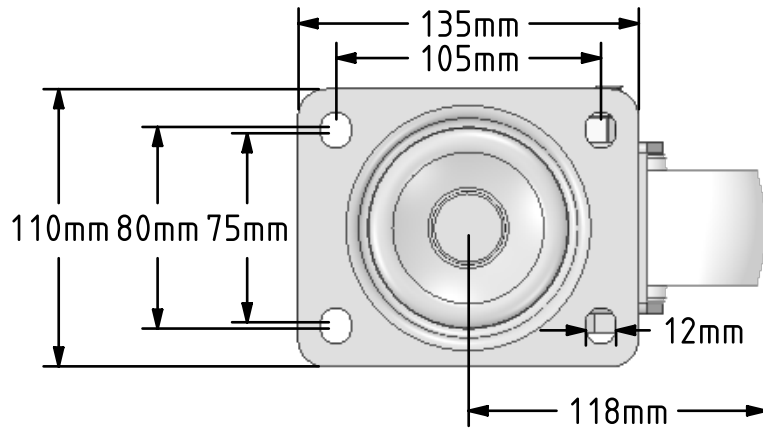
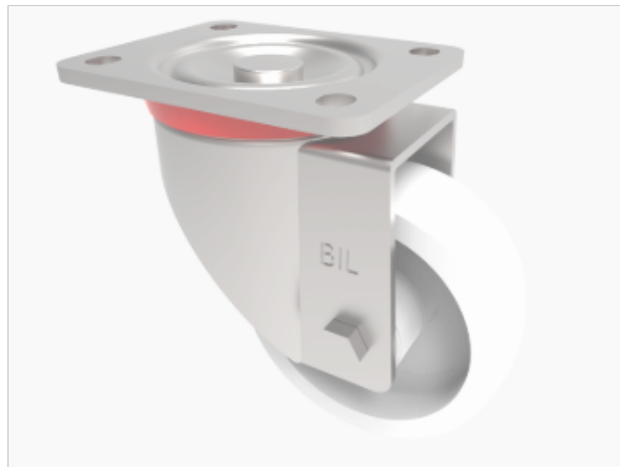


DRAWING DISCLAIMER
 COPYRIGHT OF THIS DRAWING IS RESERVED BY BIL GROUP LTD. IT IS ISSUED ON CONDITION THAT IT IS NOT REPRODUCED, COPIED, OR DISCLOSED TO A THIRD PARTY EITHER WHOLLY OR IN PART WITHOUT THE CONSENT IN WRITING OF BIL GROUP LTD.



Description:
 BZP125NY

Pressed steel swivel castor with a top plate fixing fitted with a white nylon wheel with a plain bore. Wheel diameter 125mm, tread width 45mm, overall height 164mm, plate size 135mm x 110mm, hole centres 105mm x 80mm. Load capacity 750kg.



	NAME	DATE
DRAWN	Matt	07/01/19
APPROVED BY	Chris	07/01/19
SCALE	1:3	07/01/19
WEIGHT	2.426kg	07/01/19

UNLESS OTHERWISE SPECIFIED DIMENSIONS ARE IN MILLIMETRES
 Unspecified Tolerances
 Machining ± 0.25mm
 Fabrication ± 1mm

 BIL Group Ltd, Porte Marsh Road, Calne Wiltshire, SN11 9BW, United Kingdom
 Tel +44 (0)1249 822 222 Fax: +44 (0)1249 822 300
 www.bilgroup.co.uk

TITLE
BZP125NY

SIZE	DWG NO.	REV
A4	BILCW03BZP125NY__01	1
FILE NAME	BILCW03BZP125NY__01.PDF SHEET 1 OF 1	