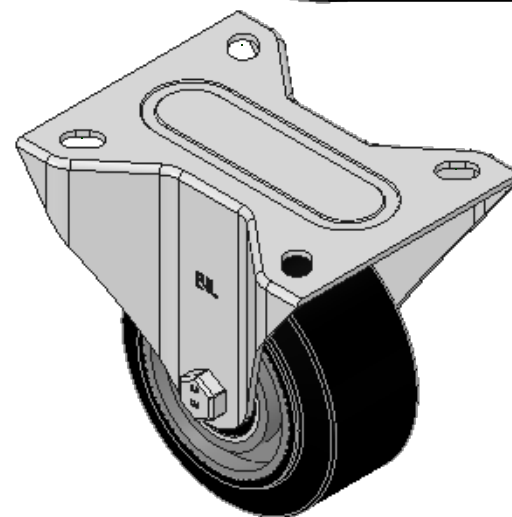
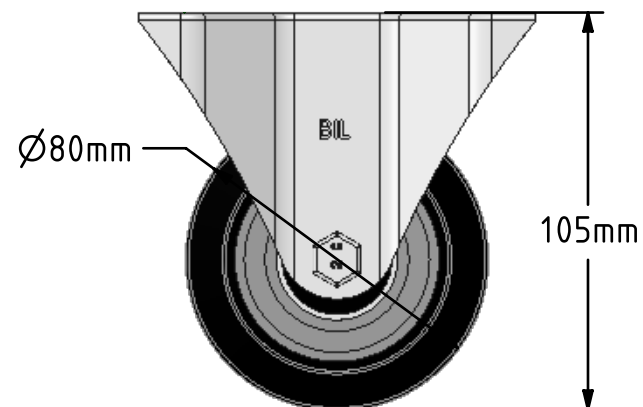
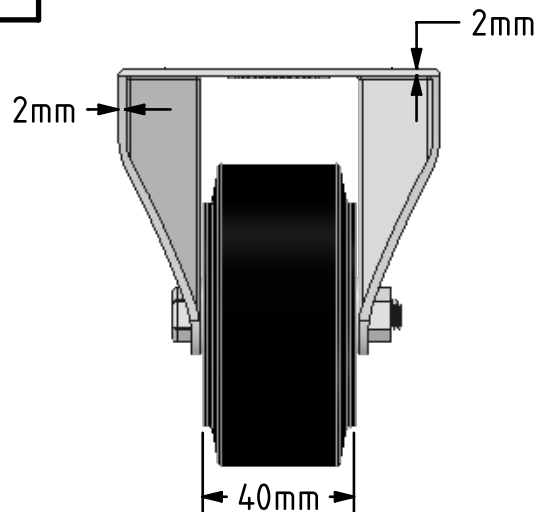
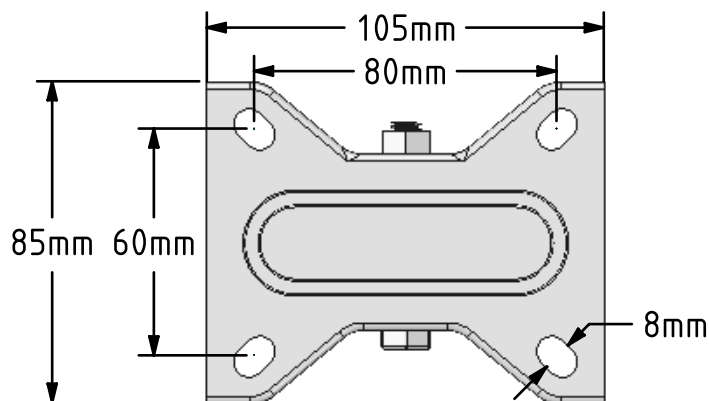


DRAWING DISCLAIMER
 COPYRIGHT OF THIS DRAWING IS RESERVED BY BIL GROUP LTD. IT IS ISSUED ON CONDITION THAT IT IS NOT REPRODUCED, COPIED, OR DISCLOSED TO A THIRD PARTY EITHER WHOLLY OR IN PART WITHOUT THE CONSENT IN WRITING OF BIL GROUP LTD.



Description:
 BZMMF80ERBJ

Pressed steel fixed castor with top plate fixing fitted with a black high elastic natural 65 shore A rubber tyre on aluminium centred wheel with ball bearing. Wheel diameter 80mm, tread width 40mm, overall height 105mm, top plate 105mm x 85mm, hole centres 80mm x 60mm. Load capacity 180kg. REACH compliant also PAH-Free rubber to confirm to EU-directive 2005/69/EC



| | NAME | DATE |
|-------------|---------|----------|
| DRAWN | Matt | 31/07/18 |
| APPROVED BY | Tim W | 31/07/18 |
| SCALE | 1:2 | 31/07/18 |
| WEIGHT | 0.619kg | 31/07/18 |



BIL Group Ltd, Porte Marsh Road, Calne
 Wiltshire, SN11 9BW, United Kingdom
 Tel +44 (0)1249 822 222 Fax: +44 (0)1249 822 300
 www.bilgroup.co.uk

TITLE

BZMMF80ERBJ

UNLESS OTHERWISE SPECIFIED DIMENSIONS ARE IN MILLIMETRES

Unspecified Tolerances
 Machining ± 0.25mm
 Fabrication ± 1mm

| SIZE | DWG NO. | REV |
|-----------|---------------------------|--------------|
| A4 | BILCW03BZMMF80ERBJ_01 | 1 |
| FILE NAME | BILCW03BZMMF80ERBJ_01.PDF | SHEET 1 OF 1 |