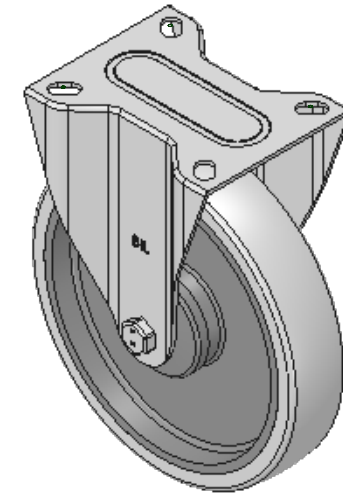
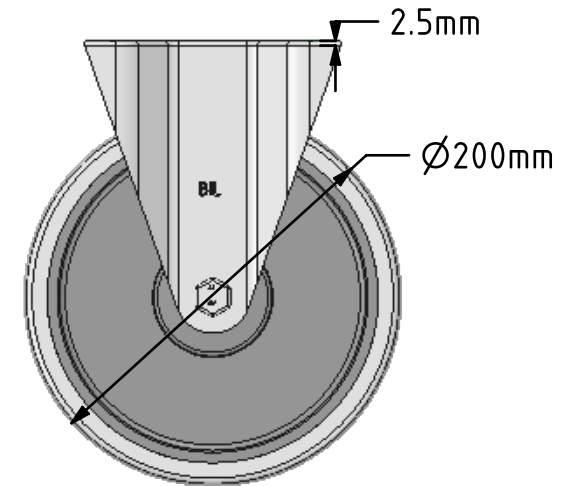
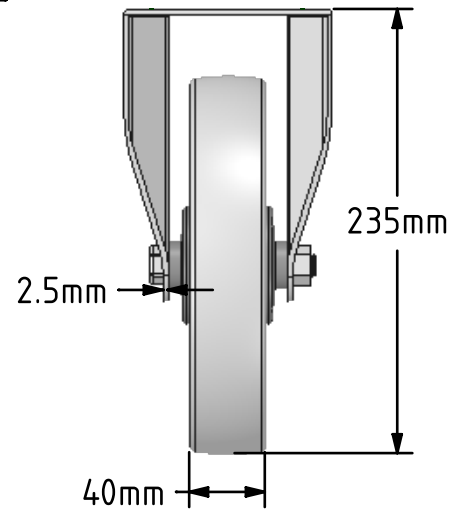
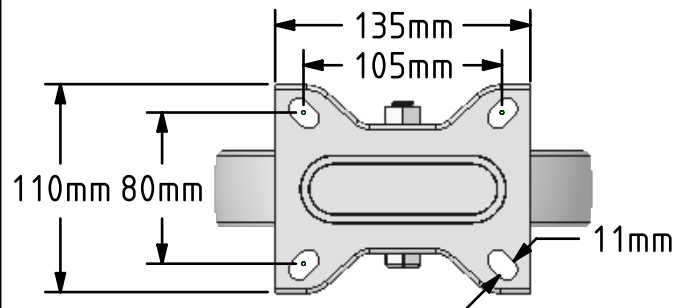


**DRAWING DISCLAIMER**

COPYRIGHT OF THIS DRAWING IS RESERVED BY BIL GROUP LTD. IT IS ISSUED ON CONDITION THAT IT IS NOT REPRODUCED, COPIED, OR DISCLOSED TO A THIRD PARTY EITHER WHOLLY OR IN PART WITHOUT THE CONSENT IN WRITING OF BIL GROUP LTD.

**Description:**

BZMMF200STPRBJ

Pressed steel fixed castor with top plate fixing fitted with a 65 shore A grey thermoplastic rubber tyre on grey polypropylene centre wheel with single ball bearing with retaining caps. Wheel diameter 200mm, tread width 40mm, overall height 235mm, top plate 135mm x 110mm, hole centres 105mm x 80mm. Load capacity 220kg. REACH compliant also PAH-Free rubber to confirm to EU-directive 2005/69/EC



	NAME	DATE
DRAWN	Matt	17/01/18
APPROVED BY	Chris	17/01/18
SCALE	1:4	17/01/18
WEIGHT	1.452kg	17/01/18

UNLESS OTHERWISE SPECIFIED DIMENSIONS ARE IN MILLIMETRES

Unspecified Tolerances  
Machining  $\pm 0.25\text{mm}$   
Fabrication  $\pm 1\text{mm}$



BIL Group Ltd, Porte Marsh Road, Calne  
Wiltshire, SN11 9BW, United Kingdom  
Tel +44 (0)1249 822 222 Fax: +44 (0)1249 822 300  
www.bilgroup.co.uk

TITLE

BZMMF200STPRBJ

SIZE DWG NO.

A4

BILCW03BZMMF200STPRBJ\_\_01

REV

1

FILE NAME BILCW03BZMMF200STPRBJ\_\_01.PDF SHEET 1 OF 1