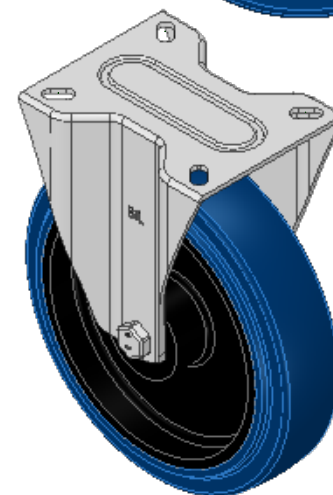
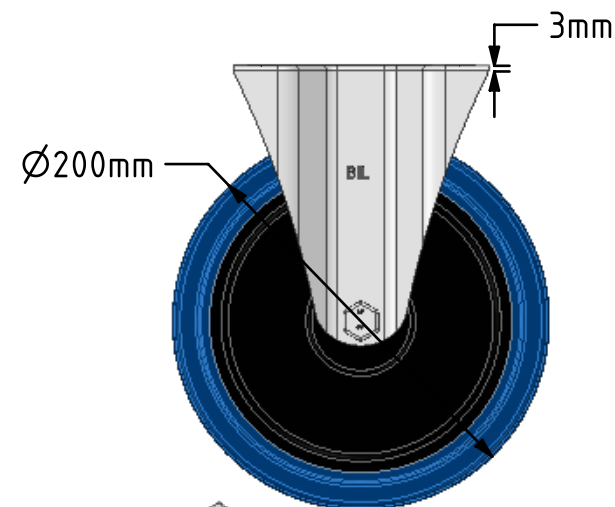
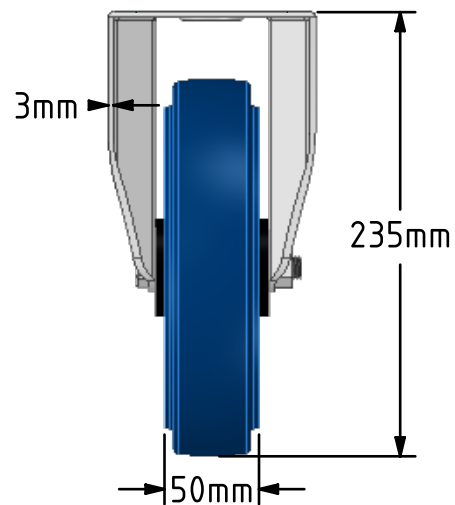
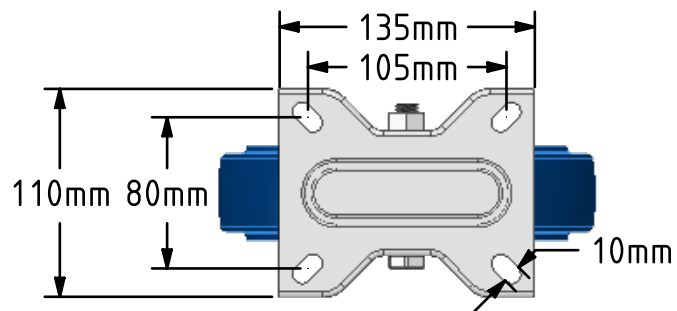


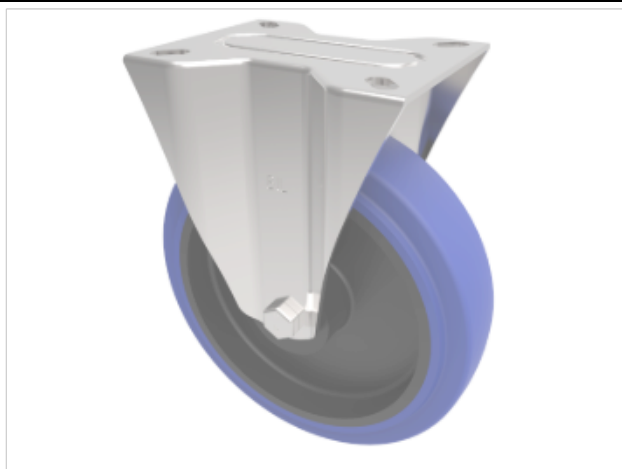
DRAWING DISCLAIMER

COPYRIGHT OF THIS DRAWING IS RESERVED BY BIL GROUP LTD. IT IS ISSUED ON CONDITION THAT IT IS NOT REPRODUCED, COPIED, OR DISCLOSED TO A THIRD PARTY EITHER WHOLLY OR IN PART WITHOUT THE CONSENT IN WRITING OF BIL GROUP LTD.

**Description:**

BZMMF200RNB

Pressed steel fixed castor with a top plate fixing fitted with a blue 75 shore A elastic rubber tyre on black nylon centre wheel with a roller bearing. Wheel diameter 200mm, tread width 50mm, overall height 235mm, top plate 135mm x 110mm hole centres 105mm x 80mm. Load capacity 400kg.



	NAME	DATE
DRAWN	Matt	06/03/19
APPROVED BY	Chris	06/03/19
SCALE	1:4	06/03/19
WEIGHT	2.138kg	06/03/19

UNLESS OTHERWISE SPECIFIED DIMENSIONS ARE IN MILLIMETRES

Unspecified Tolerances
Machining $\pm 0.25\text{mm}$
Fabrication $\pm 1\text{mm}$



BIL Group Ltd, Porte Marsh Road, Calne
Wiltshire, SN11 9BW, United Kingdom
Tel +44 (0)1249 822 222 Fax: +44 (0)1249 822 300
www.bilgroup.co.uk

TITLE

BZMMF200RNB

SIZE

DWG NO.

A4

BILCW03BZMMF200RNB__03

REV

3

FILE NAME

BILCW03BZMMF200RNB__03.PDF

SHEET 1 OF 1