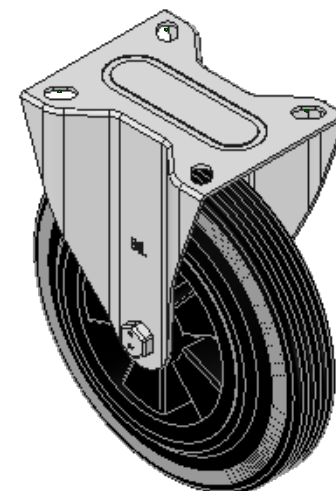
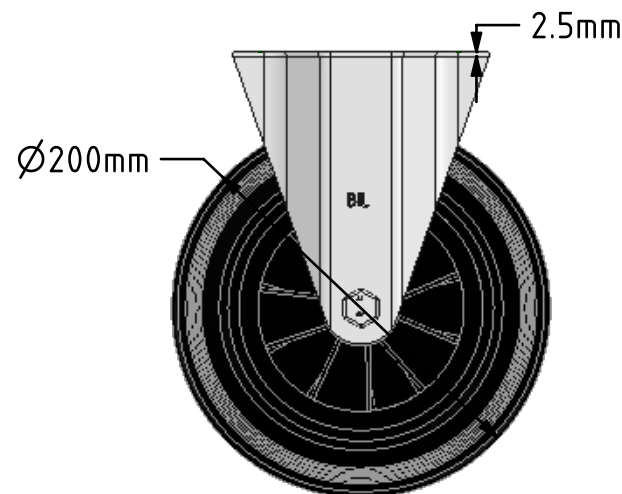
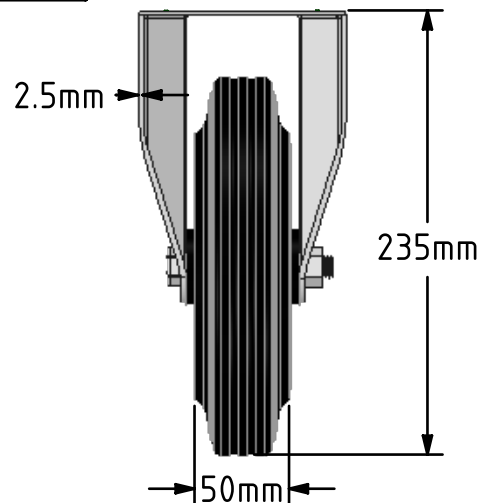
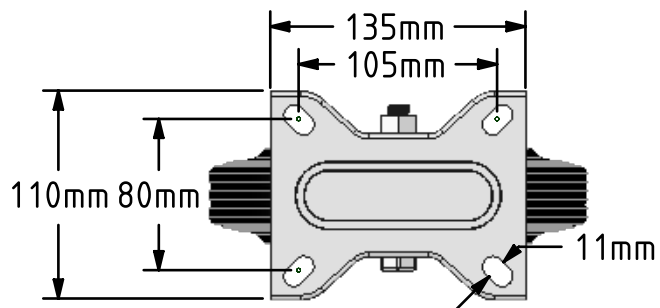


DRAWING DISCLAIMER
 COPYRIGHT OF THIS DRAWING IS RESERVED BY BIL GROUP LTD. IT IS ISSUED ON CONDITION THAT IT IS NOT REPRODUCED, COPIED, OR DISCLOSED TO A THIRD PARTY EITHER WHOLLY OR IN PART WITHOUT THE CONSENT IN WRITING OF BIL GROUP LTD.



Description:
 BZMMF200PSB

Pressed steel fixed castor with a top plate fixing fitted with a black rubber tyre black polypropylene centre with a roller bearing. Wheel diameter 200mm, tread width 50mm, overall height 235mm, top plate 135mm x 110mm, hole centres 105mm x 80mm. Load capacity 205kg



	NAME	DATE
DRAWN	Matt	03/08/18
APPROVED BY	Chris	03/08/18
SCALE	1:4	03/08/18
WEIGHT	2.249kg	03/08/18

UNLESS OTHERWISE SPECIFIED DIMENSIONS ARE IN MILLIMETRES
 Unspecified Tolerances
 Machining ± 0.25mm
 Fabrication ± 1mm

 BIL Group Ltd, Porte Marsh Road, Calne
 Wiltshire, SN11 9BW, United Kingdom
 Tel +44 (0)1249 822 222 Fax: +44 (0)1249 822 300
 www.bilgroup.co.uk

TITLE
BZMMF200PSB

SIZE	DWG NO.	REV
A4	BILCW03BZMMF200PSB_01	1

FILE NAME BILCW03BZMMF200PSB_01.PDF SHEET 1 OF 1