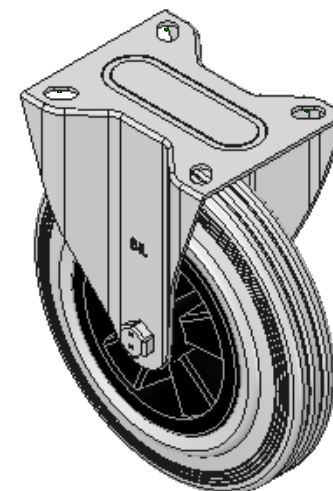
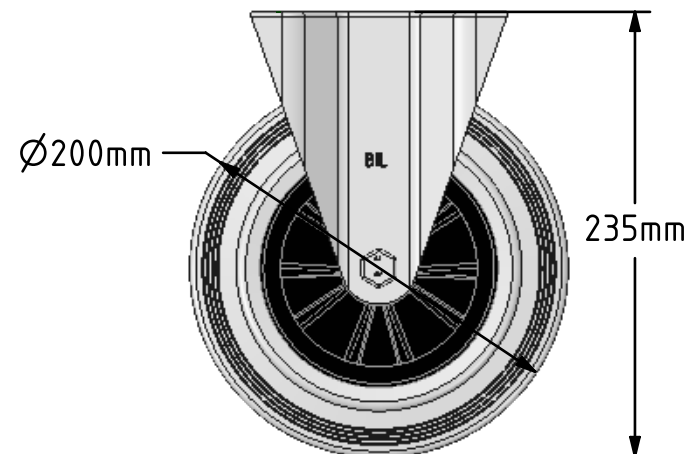
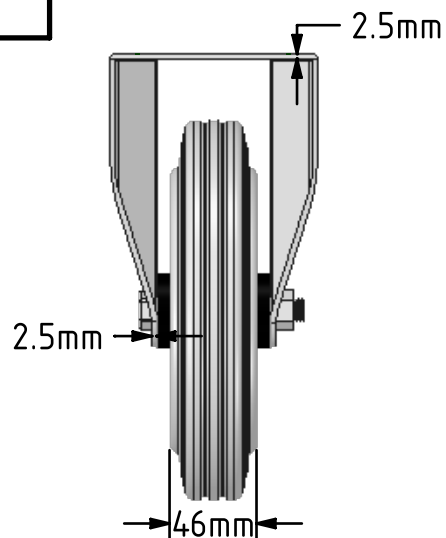
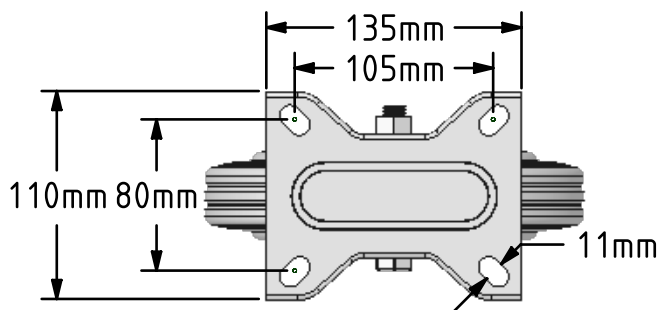


DRAWING DISCLAIMER
 COPYRIGHT OF THIS DRAWING IS RESERVED BY BIL GROUP LTD. IT IS ISSUED ON CONDITION THAT IT IS NOT REPRODUCED, COPIED, OR DISCLOSED TO A THIRD PARTY EITHER WHOLLY OR IN PART WITHOUT THE CONSENT IN WRITING OF BIL GROUP LTD.



Description:
 BZMMF200GRB

Pressed steel fixed castor with top plate fixing fitted with grey rubber tyre on polypropylene centred wheel with roller bearings. Wheel diameter 200mm, tread width 50mm, overall height 235mm, plate size 135mm x 110mm, hole centres 105mm x 80mm. Load capacity 205kg.



	NAME	DATE
DRAWN	Matt	17/01/18
APPROVED BY	Chris	17/01/18
SCALE	1:4	17/01/18
WEIGHT	2.369kg	17/01/18

UNLESS OTHERWISE SPECIFIED DIMENSIONS ARE IN MILLIMETRES

Unspecified Tolerances
 Machining ± 0.25mm
 Fabrication ± 1mm



BIL Group Ltd, Porte Marsh Road, Calne
 Wiltshire, SN11 9BW, United Kingdom
 Tel +44 (0)1249 822 222 Fax: +44 (0)1249 822 300
 www.bilgroup.co.uk

TITLE

BZMMF200GRB

SIZE DWG NO.

A4

BILCW03BZMMF200GRB_01

REV

1

FILE NAME BILCW03BZMMF200GRB_01.PDF

SHEET 1 OF 1