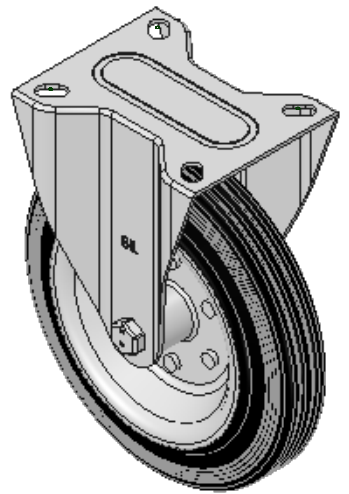
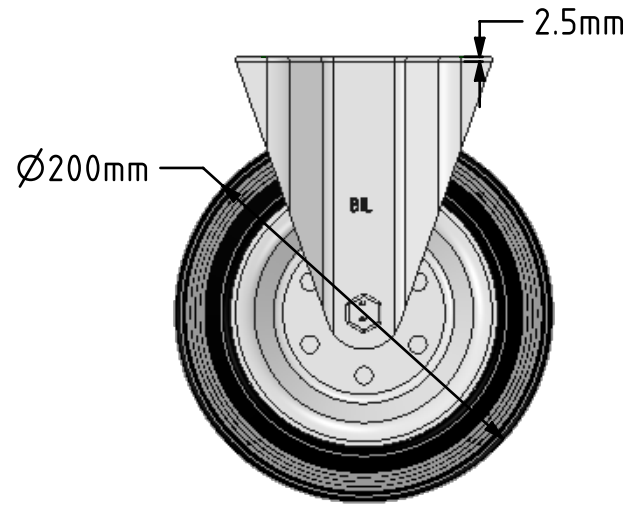
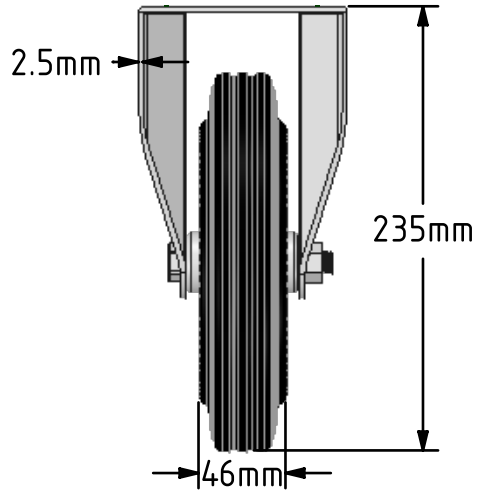
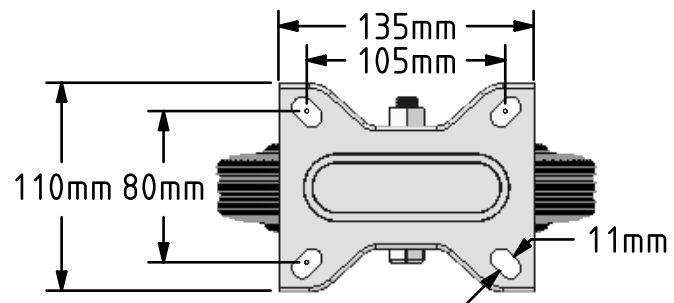


DRAWING DISCLAIMER
 COPYRIGHT OF THIS DRAWING IS RESERVED BY BIL GROUP LTD. IT IS ISSUED ON CONDITION THAT IT IS NOT REPRODUCED, COPIED, OR DISCLOSED TO A THIRD PARTY EITHER WHOLLY OR IN PART WITHOUT THE CONSENT IN WRITING OF BIL GROUP LTD.



Description:
 BZMMF200BSB
 Pressed steel fixed castor with top plate fixing fitted with black rubber tyre on steel disc centre with roller bearing. Wheel diameter 200mm, tread width 46mm, overall height 235mm, plate size 135mm x 110mm, hole centres 105mm x 80mm. Load capacity 205kg.



	NAME	DATE
DRAWN	Matt	25/07/18
APPROVED BY	Tim W	25/07/18
SCALE	1:4	25/07/18
WEIGHT	2.403kg	25/07/18

BIL BIL Group Ltd, Porte Marsh Road, Calne
 Wiltshire, SN11 9BW, United Kingdom
 Tel +44 (0)1249 822 222 Fax: +44 (0)1249 822 300
 www.bilgroup.co.uk

TITLE
BZMMF200BSB

UNLESS OTHERWISE SPECIFIED DIMENSIONS ARE IN MILLIMETRES
 Unspecified Tolerances
 Machining ± 0.25mm
 Fabrication ± 1mm

SIZE	DWG NO.	REV
A4	BILCW03BZMMF200BSB_01	1
FILE NAME	BILCW03BZMMF200BSB_01.PDF SHEET 1 OF 1	