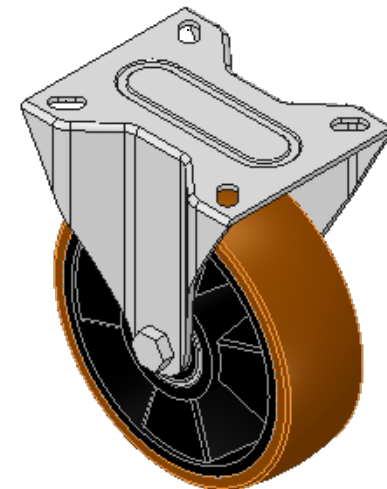
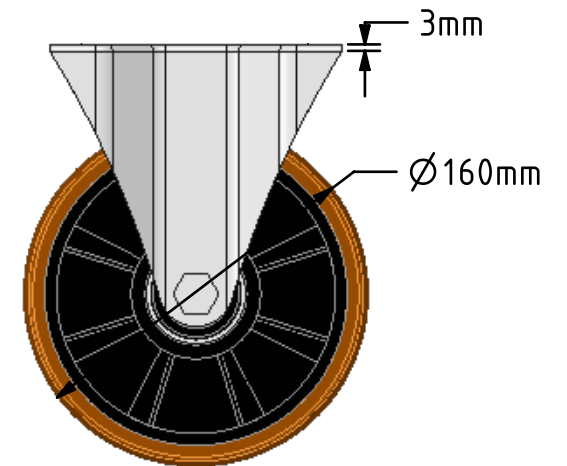
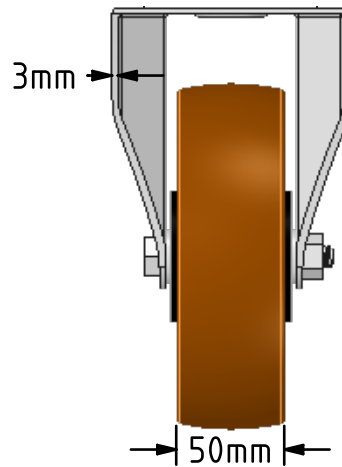
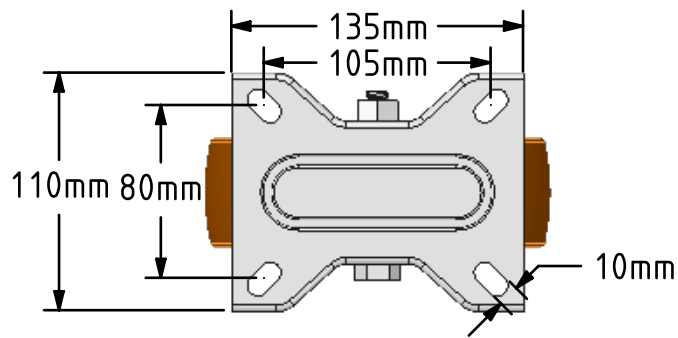
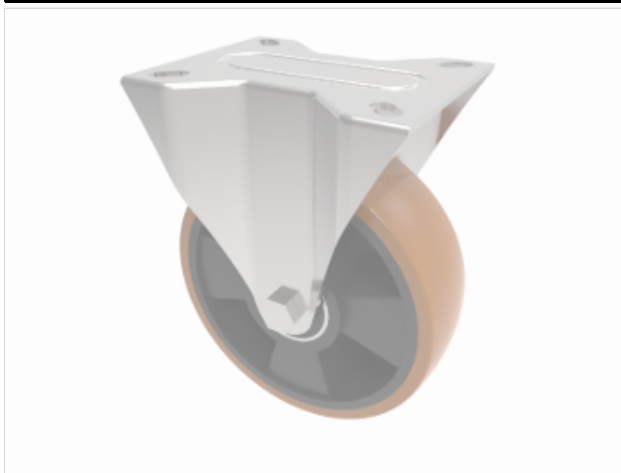


**DRAWING DISCLAIMER**  
 COPYRIGHT OF THIS DRAWING IS RESERVED BY BIL GROUP LTD. IT IS ISSUED ON CONDITION THAT IT IS NOT REPRODUCED, COPIED, OR DISCLOSED TO A THIRD PARTY EITHER WHOLLY OR IN PART WITHOUT THE CONSENT IN WRITING OF BIL GROUP LTD.



**Description:**  
 BZMMF160XPNB  
 Pressed steel fixed castor with a top plate fixing fitted with a brown polyurethane tyred black nylon centred ball bearing wheel, Wheel diameter 160mm, tread width 50mm, overall height 195mm, top plate 135mm x 110mm, hole centres 105mm x 80/75mm. Load capacity 350kg.



	NAME	DATE
DRAWN	Matt	31/10/17
APPROVED BY	Tim W	31/10/17
SCALE	2:7	31/10/17
WEIGHT	1.782kg	31/10/17

UNLESS OTHERWISE SPECIFIED DIMENSIONS ARE IN MILLIMETRES  
 Unspecified Tolerances  
 Machining ± 0.25mm  
 Fabrication ± 1mm

 BIL Group Ltd, Porte Marsh Road, Calne Wiltshire, SN11 9BW, United Kingdom  
 Tel +44 (0)1249 822 222 Fax: +44 (0)1249 822 300  
 www.bilgroup.co.uk

TITLE		REV
BZMMF160XPNB		
SIZE	DWG NO.	REV
A4	BILCW03BZMMF160XPNBJ_01	1
FILE NAME	BILCW03BZMMF160XPNBJ_01.PDF SHEET 1 OF 1	