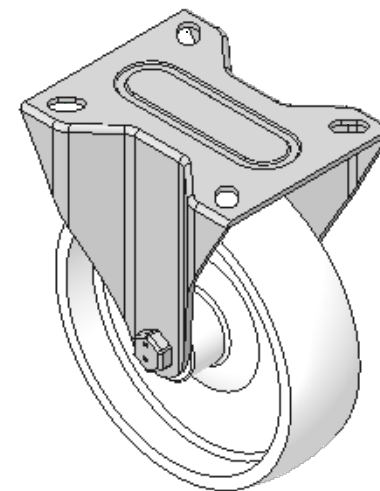
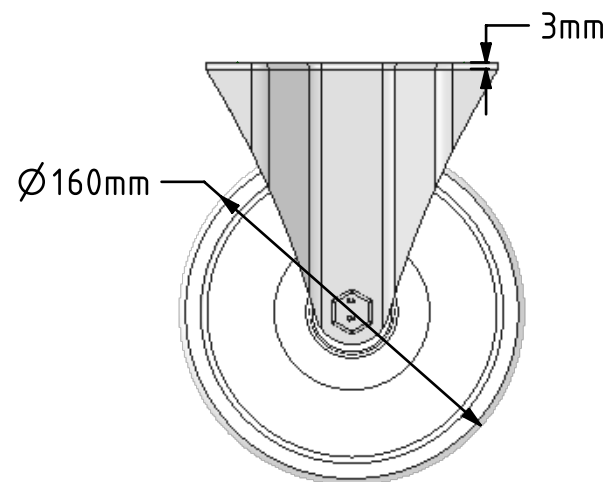
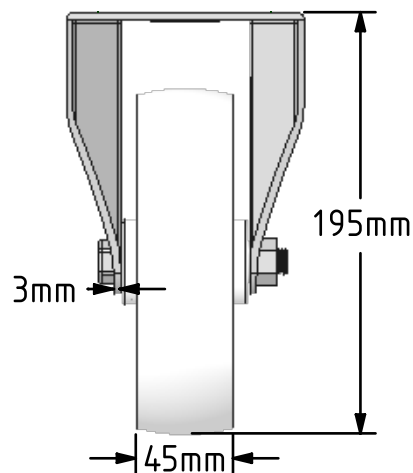
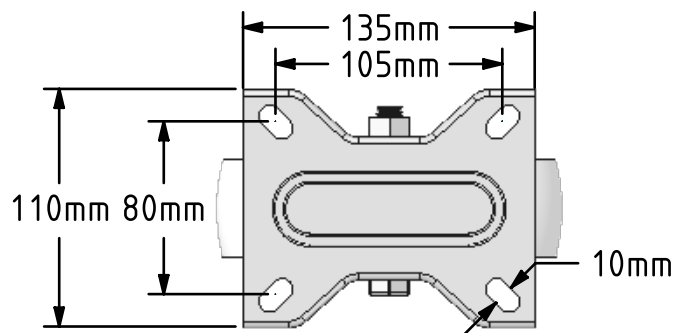


DRAWING DISCLAIMER  
 COPYRIGHT OF THIS DRAWING IS RESERVED BY BIL GROUP LTD. IT IS ISSUED ON CONDITION THAT IT IS NOT REPRODUCED, COPIED, OR DISCLOSED TO A THIRD PARTY EITHER WHOLLY OR IN PART WITHOUT THE CONSENT IN WRITING OF BIL GROUP LTD.



Description:  
 BZMMF160NYB

Pressed steel fixed castor with a top plate fixing fitted with a white nylon wheel with a roller bearing. Wheel diameter 160mm, tread width 45mm, overall height 195mm, plate size 135mm x 110mm, hole centres 105mm x 80mm. Load capacity 350kg.



	NAME	DATE
DRAWN	Matt	02/08/18
APPROVED BY	Chris	02/08/18
SCALE	2:7	02/08/18
WEIGHT	1.327kg	02/08/18

 BIL Group Ltd, Porte Marsh Road, Calne  
 Wiltshire, SN11 9BW, United Kingdom  
 Tel +44 (0)1249 822 222 Fax: +44 (0)1249 822 300  
 www.bilgroup.co.uk

TITLE	
BZMMF160NYB	

UNLESS OTHERWISE SPECIFIED DIMENSIONS ARE IN MILLIMETRES		SIZE	DWG NO.	REV
Unspecified Tolerances Machining ± 0.25mm Fabrication ± 1mm		A4	BILCW03BZMMF160NYB_01	1
FILE NAME		SHEET 1 OF 1		