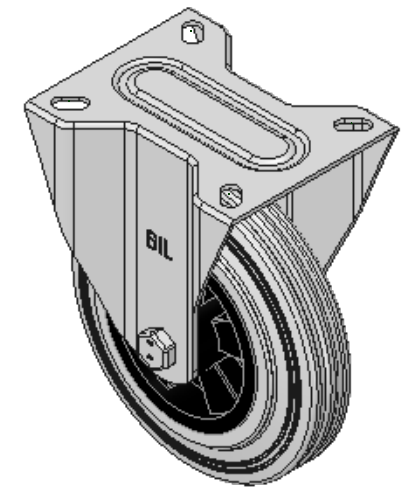
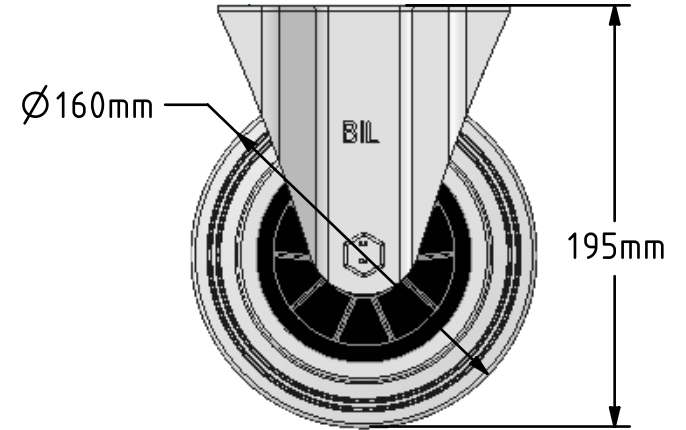
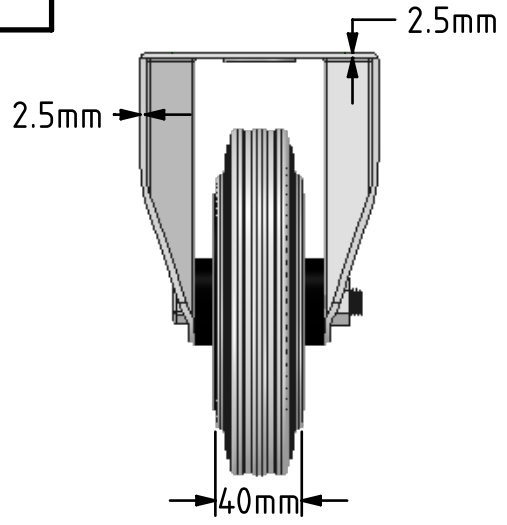
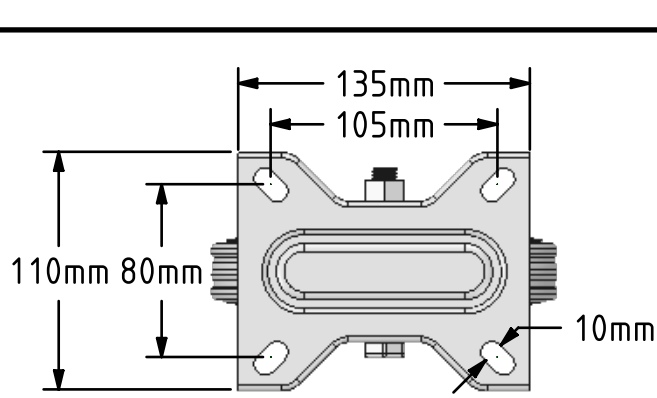



**DRAWING DISCLAIMER**  
 COPYRIGHT OF THIS DRAWING IS RESERVED BY BIL GROUP LTD. IT IS ISSUED ON CONDITION THAT IT IS NOT REPRODUCED, COPIED, OR DISCLOSED TO A THIRD PARTY EITHER WHOLLY OR IN PART WITHOUT THE CONSENT IN WRITING OF BIL GROUP LTD.



**Description:**  
 BZMMF160GRB

Pressed steel fixed castor with a top plate fixing fitted with a grey rubber tyre polypropylene centred wheel with a plain bore. Wheel diameter 160mm, tread width 40mm, overall height 195mm, top plate 135mm x 110mm, hole centres 105mm x 80/75mm. Load capacity 140kg.



	NAME	DATE	 BIL Group Ltd, Porte Marsh Road, Calne Wiltshire, SN11 9BW, United Kingdom Tel +44 (0)1249 822 222 Fax: +44 (0)1249 822 300 www.bilgroup.co.uk
DRAWN	Matt	20/07/18	
APPROVED BY	Chris	20/07/18	
SCALE	2:7	20/07/18	
WEIGHT	1.669kg	20/07/18	
UNLESS OTHERWISE SPECIFIED DIMENSIONS ARE IN MILLIMETRES  Unspecified Tolerances Machining ± 0.25mm Fabrication ± 1mm			TITLE <p style="text-align: center;"><b>BZMMF160GRB</b></p>
SIZE	DWG NO.	REV	
A4	BILCW03BZMMF160GRB_01	1	
FILE NAME	BILCW03BZMMF160GRB_01.PDF		SHEET 1 OF 1