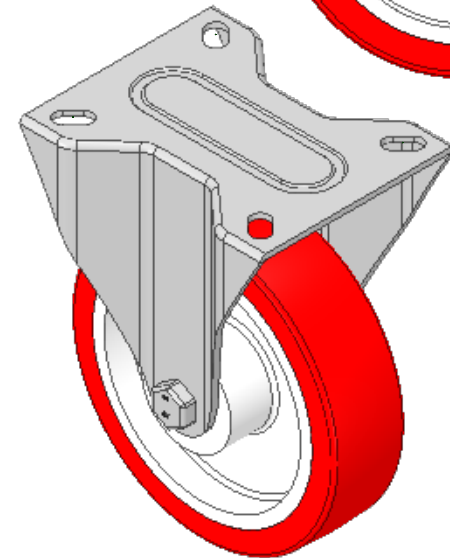
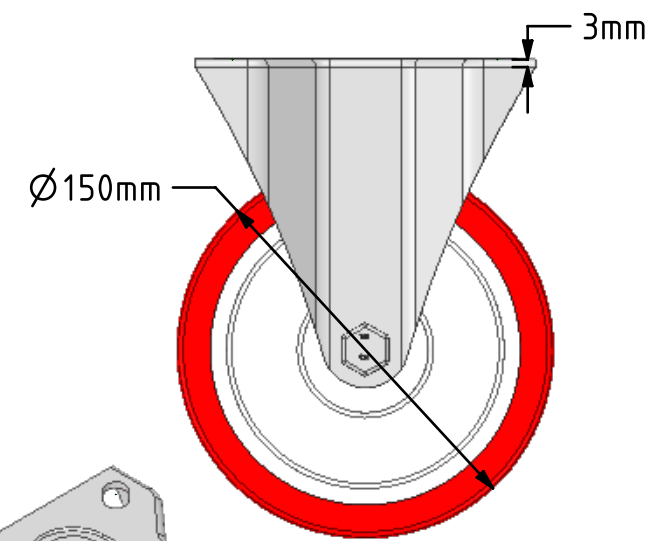
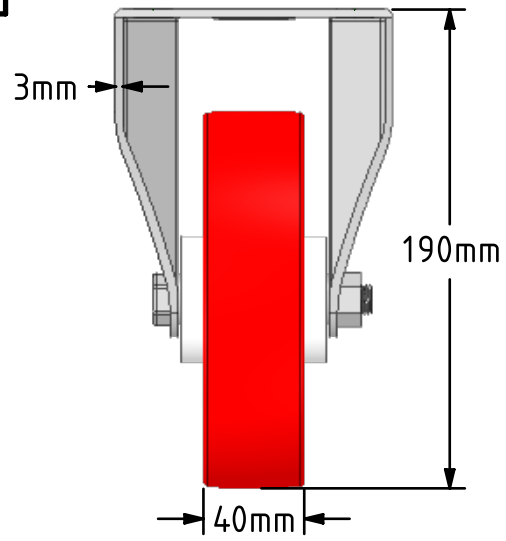
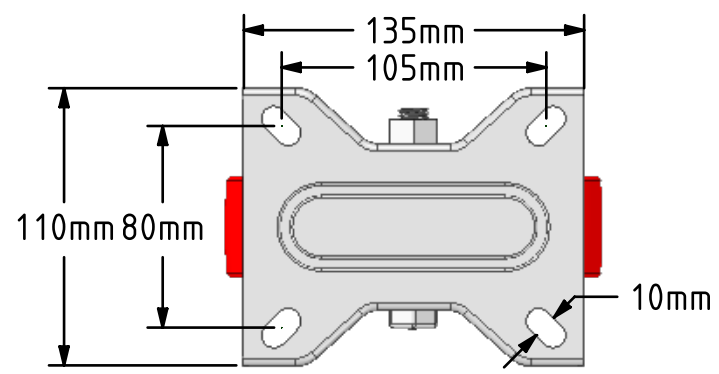
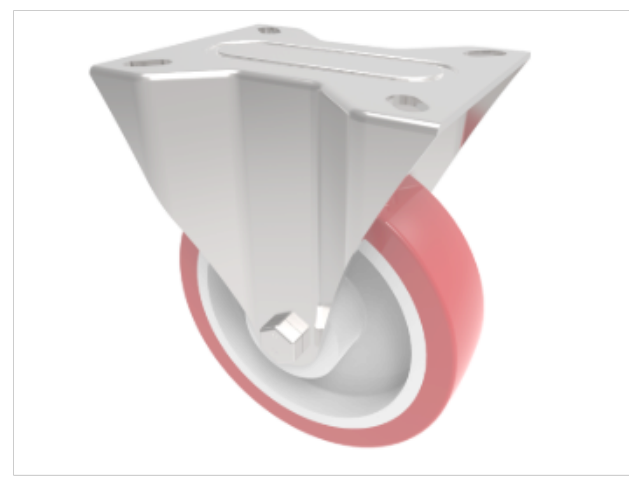



DRAWING DISCLAIMER
 COPYRIGHT OF THIS DRAWING IS RESERVED BY BIL GROUP LTD. IT IS ISSUED ON CONDITION THAT IT IS NOT REPRODUCED, COPIED, OR DISCLOSED TO A THIRD PARTY EITHER WHOLLY OR IN PART WITHOUT THE CONSENT IN WRITING OF BIL GROUP LTD.



Description:
 BZMMF150NPB
 Pressed steel fixed castor with a top plate fixing fitted with a red polyurethane wheel on white nylon centre with a roller bearing. Wheel diameter 150mm, tread width 40mm, overall height 190mm, top plate 135mm x 110mm, hole centres 105mm x 80mm. Load capacity 400kg.



| | | | | |
|---|---------|----------|---|---|
| | NAME | DATE |  BIL Group Ltd, Porte Marsh Road, Calne Wiltshire, SN11 9BW, United Kingdom Tel +44 (0)1249 822 222 Fax: +44 (0)1249 822 300 www.bilgroup.co.uk | |
| DRAWN | Matt | 06/03/19 | TITLE | |
| APPROVED BY | Tim W | 06/03/19 | BZMMF150NPB | |
| SCALE | 1:3 | 06/03/19 | SIZE | DWG NO. |
| WEIGHT | 1.514kg | 06/03/19 | A4 | BILCW03BZMMF150NPB__02 |
| UNLESS OTHERWISE SPECIFIED DIMENSIONS ARE IN MILLIMETRES | | | REV | 2 |
| Unspecified Tolerances Machining $\pm 0.25\text{mm}$ Fabrication $\pm 1\text{mm}$ | | | FILE NAME | BILCW03BZMMF150NPB__02.PDF SHEET 1 OF 1 |