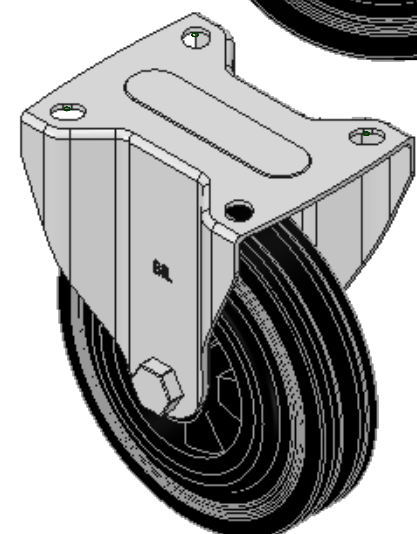
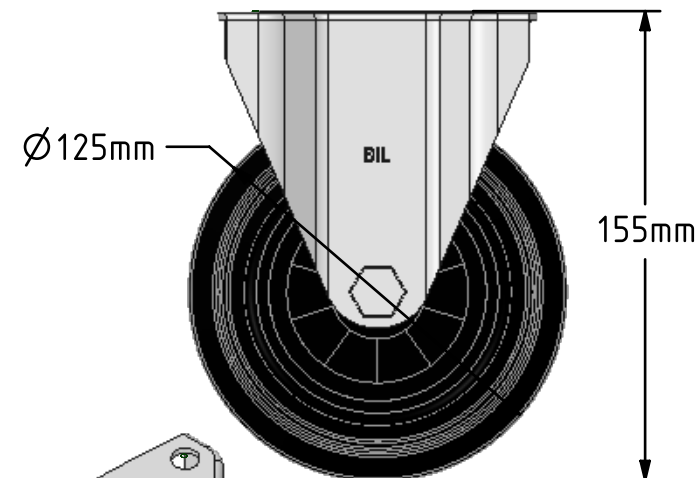
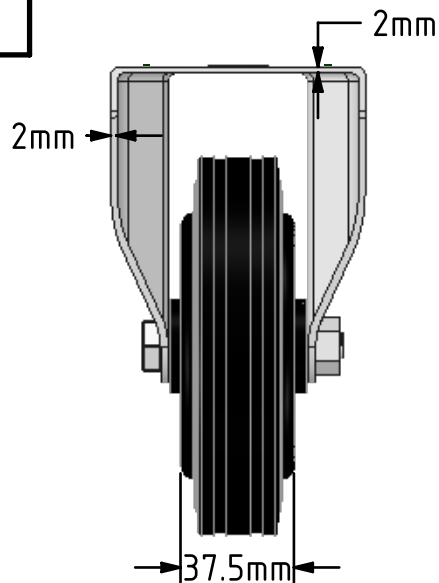
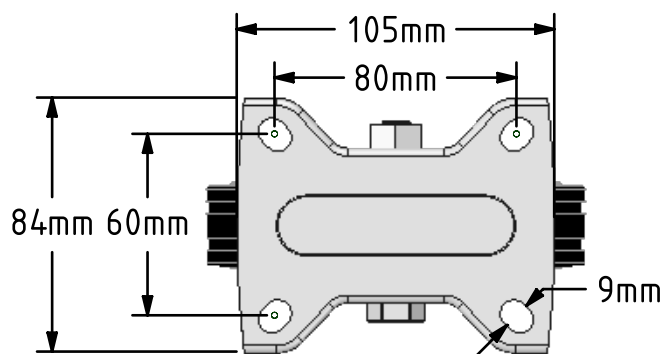


DRAWING DISCLAIMER
 COPYRIGHT OF THIS DRAWING IS RESERVED BY BIL GROUP LTD. IT IS ISSUED ON CONDITION THAT IT IS NOT REPRODUCED, COPIED, OR DISCLOSED TO A THIRD PARTY EITHER WHOLLY OR IN PART WITHOUT THE CONSENT IN WRITING OF BIL GROUP LTD.



Description:
 BZMMF125PSB

Pressed steel fixed castor with a top plate fixing fitted with a black rubber tyred polypropylene centred wheel with roller bearing. Wheel diameter 125mm, tread width 37.5mm, overall height 155mm, top plate 105mm x 85mm, hole centres 80mm x 60mm. load capacity 90kg.



	NAME	DATE
DRAWN	Matt	02/07/18
APPROVED BY	Chris	02/07/18
SCALE	2.5	02/07/18
WEIGHT	0.897kg	02/07/18

BIL Group Ltd, Porte Marsh Road, Calne
 Wiltshire, SN11 9BW, United Kingdom
 Tel +44 (0)1249 822 222 Fax: +44 (0)1249 822 300
 www.bilgroup.co.uk

TITLE	
BZMMF125PSB	

UNLESS OTHERWISE SPECIFIED DIMENSIONS ARE IN MILLIMETRES
 Unspecified Tolerances
 Machining ± 0.25mm
 Fabrication ± 1mm

SIZE	DWG NO.	REV
A4	BILCW03BZMMF125PSB__02	2
FILE NAME	BILCW03BZMMF125PSB__02.PDF SHEET 1 OF 1	