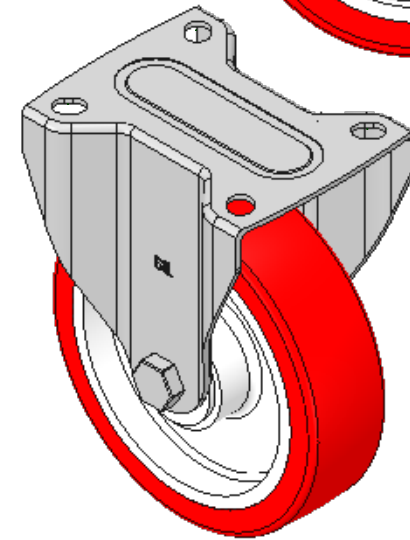
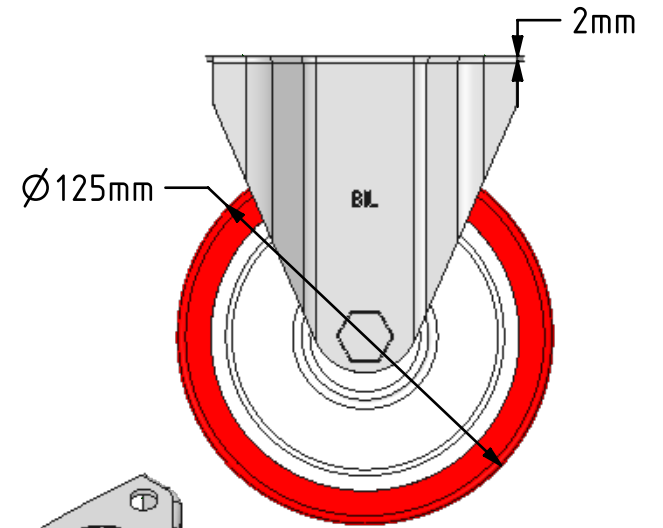
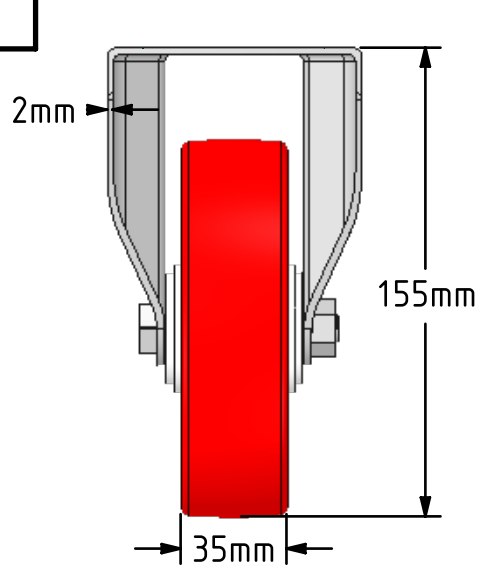
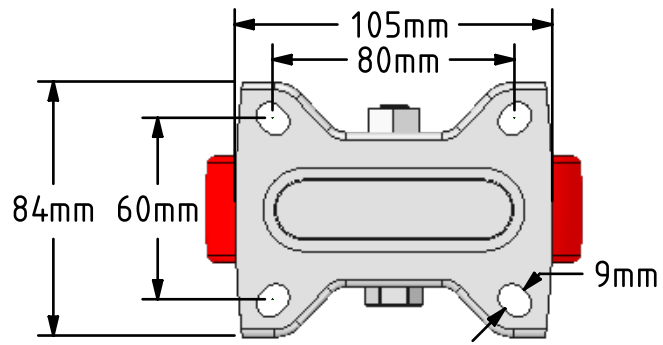
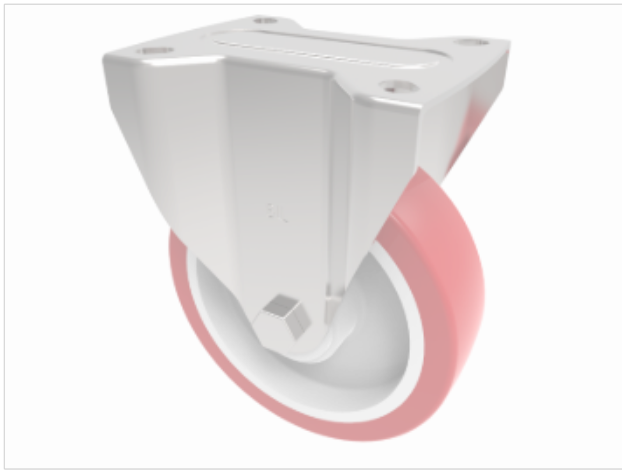



DRAWING DISCLAIMER
 COPYRIGHT OF THIS DRAWING IS RESERVED BY BIL GROUP LTD. IT IS ISSUED ON CONDITION THAT IT IS NOT REPRODUCED, COPIED, OR DISCLOSED TO A THIRD PARTY EITHER WHOLLY OR IN PART WITHOUT THE CONSENT IN WRITING OF BIL GROUP LTD.



Description:
 BZMMF125NPB
 Pressed steel fixed castor with a top plate fitted with a red polyurethane tyre on white nylon centred wheel with roller bearings, 125mm wheel diameter, 35mm tread width, 155mm overall height, 105mm x 85mm top plate, 80mm x 60mm hole centres with a load capacity of 200kgs



	NAME	DATE	 BIL Group Ltd, Porte Marsh Road, Calne Wiltshire, SN11 9BW, United Kingdom Tel +44 (0)1249 822 222 Fax: +44 (0)1249 822 300 www.bilgroup.co.uk	
DRAWN	Matt	02/08/18	TITLE	
APPROVED BY	Chris	02/08/18	BZMMF125NPB	
SCALE	2.5	02/08/18	SIZE	DWG NO.
WEIGHT	0.801kg	02/08/18	A4	BILCW03BZMMF125NPB_01
UNLESS OTHERWISE SPECIFIED DIMENSIONS ARE IN MILLIMETRES			REV	1
Unspecified Tolerances Machining ± 0.25mm Fabrication ± 1mm			FILE NAME	BILCW03BZMMF125NPB_01.PDF SHEET 1 OF 1