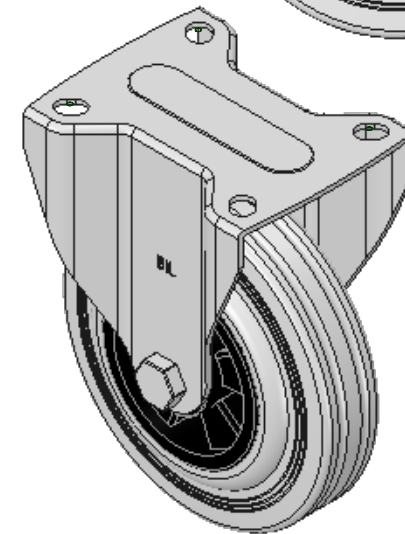
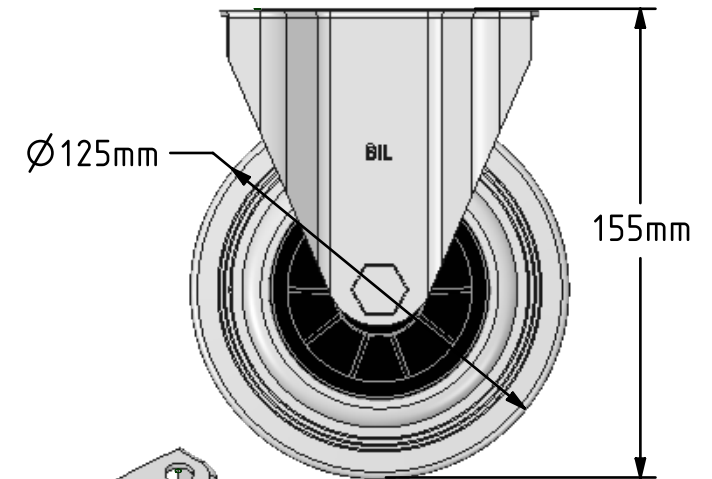
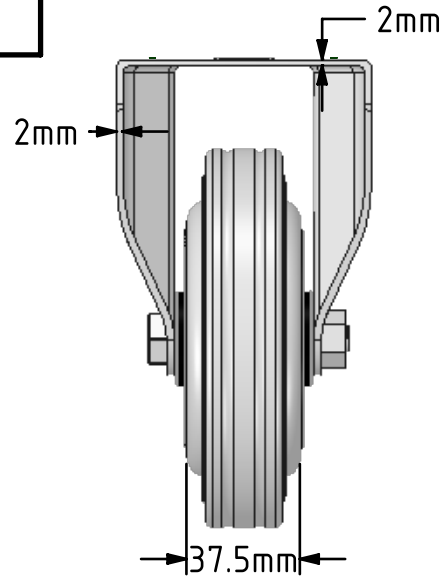
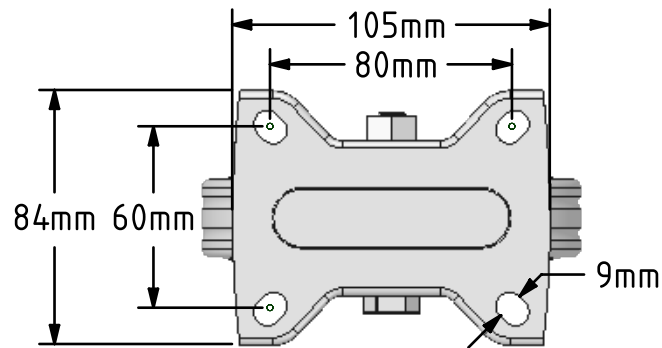



DRAWING DISCLAIMER

COPYRIGHT OF THIS DRAWING IS RESERVED BY BIL GROUP LTD. IT IS ISSUED ON CONDITION THAT IT IS NOT REPRODUCED, COPIED, OR DISCLOSED TO A THIRD PARTY EITHER WHOLLY OR IN PART WITHOUT THE CONSENT IN WRITING OF BIL GROUP LTD.

**Description:**
BZMMF125GR

Pressed steel fixed castor with a flat plate fixing fitted with a grey rubber tyre on black polypropylene centred wheel with a plain bearing. Wheel diameter 125mm, tread width 37.5mm, overall height 155mm, plate size 105mm x 85mm, hole centres 80mm x 60mm. Load capacity 90kg.



	NAME	DATE	 BIL Group Ltd, Porte Marsh Road, Calne Wiltshire, SN11 9BW, United Kingdom Tel +44 (0)1249 822 222 Fax: +44 (0)1249 822 300 www.bilgroup.co.uk		
DRAWN	Matt	03/07/18			
APPROVED BY	Chris	03/07/18			
SCALE	2:5	03/07/18			
WEIGHT	0.915kg	03/07/18			
UNLESS OTHERWISE SPECIFIED DIMENSIONS ARE IN MILLIMETRES			TITLE		
Unspecified Tolerances Machining $\pm 0.25\text{mm}$ Fabrication $\pm 1\text{mm}$			BZMMF125GR		
			SIZE	DWG NO.	REV
			A4	BILCW03BZMMF125GR__01	1
FILE NAME			BILCW03BZMMF125GR__01.PDF		SHEET 1 OF 1