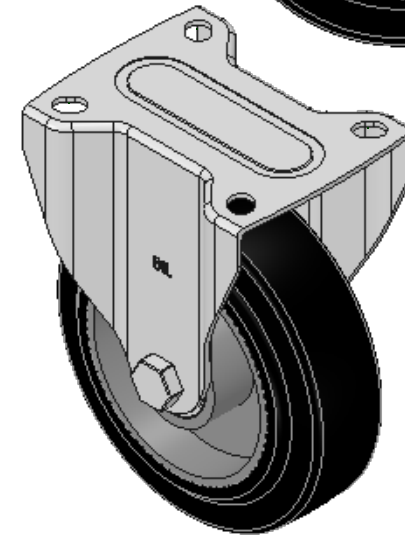
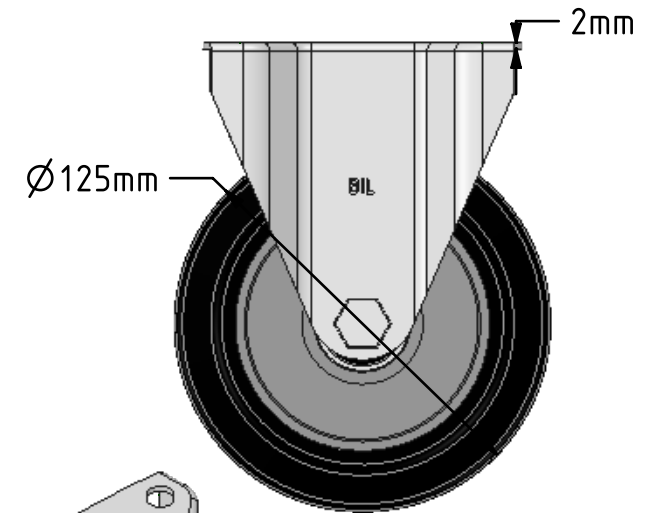
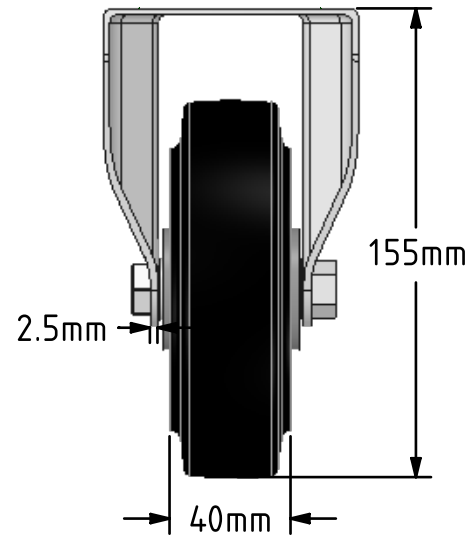
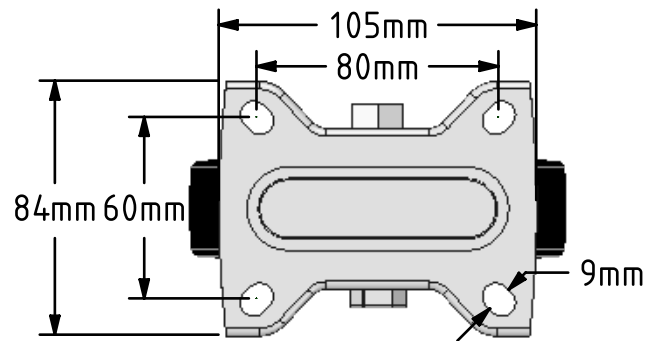


DRAWING DISCLAIMER

COPYRIGHT OF THIS DRAWING IS RESERVED BY BIL GROUP LTD. IT IS ISSUED ON CONDITION THAT IT IS NOT REPRODUCED, COPIED, OR DISCLOSED TO A THIRD PARTY EITHER WHOLLY OR IN PART WITHOUT THE CONSENT IN WRITING OF BIL GROUP LTD.

**Description:**
BZMMF125ERBJ

Pressed steel fixed castor with a top plate fixing fitted with Black high elastic natural 65 shore A rubber tyre on aluminium centred wheel with a ball bearing. Wheel diameter 125mm, tread width 40mm, overall height 155mm, top plate 105mm x 85mm, hole centres 80mm x 60mm. Load capacity 200kg. REACH compliant also PAH-Free rubber to confirm to EU-directive 2005/69/EC



	NAME	DATE
DRAWN	Matt	31/07/18
APPROVED BY	Tim W	31/07/18
SCALE	2:5	31/07/18
WEIGHT	1.029kg	31/07/18

UNLESS OTHERWISE SPECIFIED DIMENSIONS ARE IN MILLIMETRES

Unspecified Tolerances
Machining $\pm 0.25\text{mm}$
Fabrication $\pm 1\text{mm}$



BIL Group Ltd, Porte Marsh Road, Calne
Wiltshire, SN11 9BW, United Kingdom
Tel +44 (0)1249 822 222 Fax: +44 (0)1249 822 300
www.bilgroup.co.uk

TITLE

BZMMF125ERBJ

SIZE

DWG NO.

A4

BILCW03BZMMF125ERBJ_01

REV

1

FILE NAME

BILCW03BZMMF125ERBJ_01.PDF

SHEET 1 OF 1