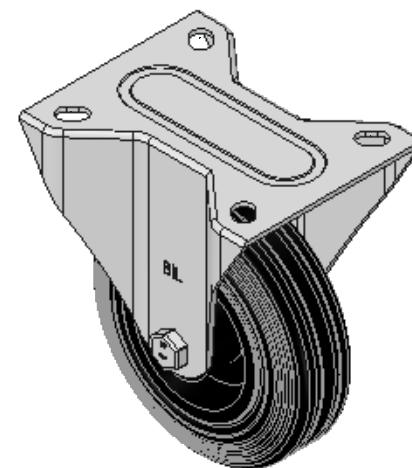
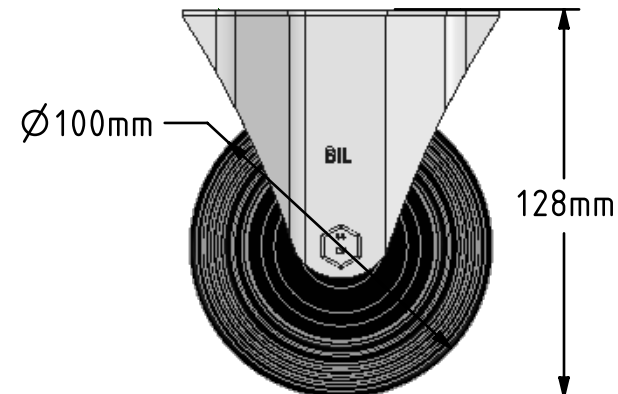
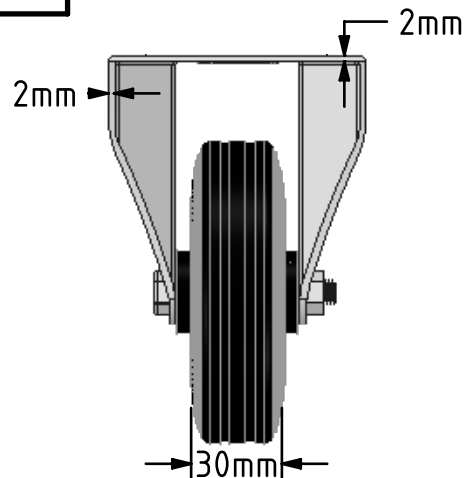
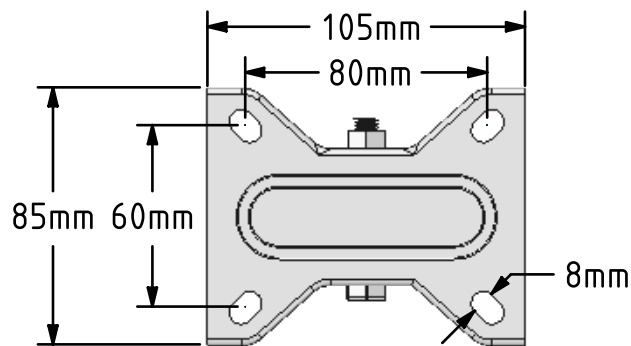
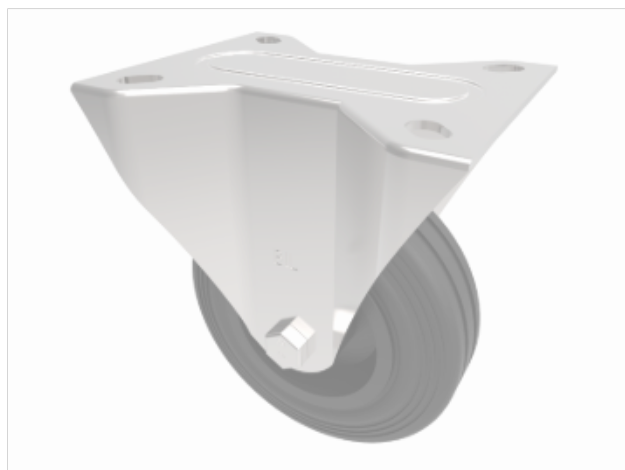


**DRAWING DISCLAIMER**  
 COPYRIGHT OF THIS DRAWING IS RESERVED BY BIL GROUP LTD. IT IS ISSUED ON CONDITION THAT IT IS NOT REPRODUCED, COPIED, OR DISCLOSED TO A THIRD PARTY EITHER WHOLLY OR IN PART WITHOUT THE CONSENT IN WRITING OF BIL GROUP LTD.



**Description:**  
 BZMMF100PSB

Pressed steel fixed castor with top plate fixing fitted with a black rubber tyre black polypropylene centred wheel with a roller bearing. Wheel diameter 100mm, tread width 30mm, overall height 128mm, top plate 105mm x 85mm, hole centres 80mm x 60mm. Load capacity 70kg.



	NAME	DATE
DRAWN	Matt	02/07/18
APPROVED BY	Chris	02/07/18
SCALE	2:5	02/07/18
WEIGHT	0.56kg	02/07/18

UNLESS OTHERWISE SPECIFIED DIMENSIONS ARE IN MILLIMETRES  
 Unspecified Tolerances  
 Machining ± 0.25mm  
 Fabrication ± 1mm

 BIL Group Ltd, Porte Marsh Road, Calne  
 Wiltshire, SN11 9BW, United Kingdom  
 Tel +44 (0)1249 822 222 Fax: +44 (0)1249 822 300  
 www.bilgroup.co.uk

TITLE  
**BZMMF100PSB**

SIZE	DWG NO.	REV
A4	BILCW03BZMMF100PSB_01	1

FILE NAME BILCW03BZMMF100PSB\_01.PDF SHEET 1 OF 1