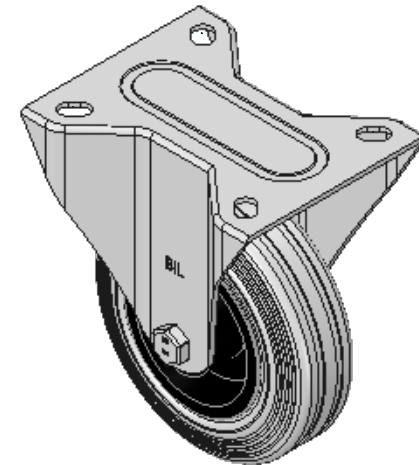
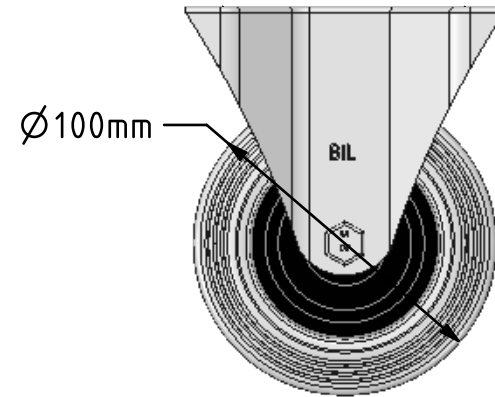
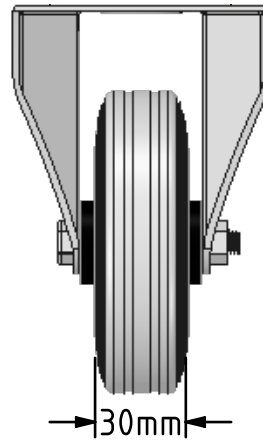
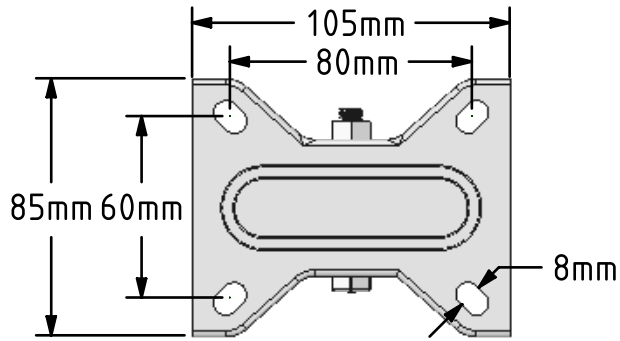


DRAWING DISCLAIMER
 COPYRIGHT OF THIS DRAWING IS RESERVED BY BIL GROUP LTD. IT IS ISSUED ON CONDITION THAT IT IS NOT REPRODUCED, COPIED, OR DISCLOSED TO A THIRD PARTY EITHER WHOLLY OR IN PART WITHOUT THE CONSENT IN WRITING OF BIL GROUP LTD.



Description:
 BZMMF100GR

Pressed steel fixed castor with top plate fixing fitted with a grey rubber tyre on black polypropylene centre with plain bearing. Wheel diameter 100mm, tread width 30mm, overall height 128mm, plate size 105mm x 85mm hole centres 80mm x 60mm. Load capacity 70kg.



	NAME	DATE
DRAWN	Matt	15/01/18
APPROVED BY	Chris	15/01/18
SCALE	2:5	15/01/18
WEIGHT	0.564kg	15/01/18

UNLESS OTHERWISE SPECIFIED DIMENSIONS ARE IN MILLIMETRES
 Unspecified Tolerances
 Machining ± 0.25mm
 Fabrication ± 1mm

 BIL Group Ltd, Porte Marsh Road, Calne Wiltshire, SN11 9BW, United Kingdom
 Tel +44 (0)1249 822 222 Fax: +44 (0)1249 822 300
 www.bilgroup.co.uk

TITLE		REV
BZMMF100GR		1
SIZE	DWG NO.	
A4	BILCW03BZMMF100GR_01	
FILE NAME	SHEET 1 OF 1	
BILCW03BZMMF100GR_01.PDF		