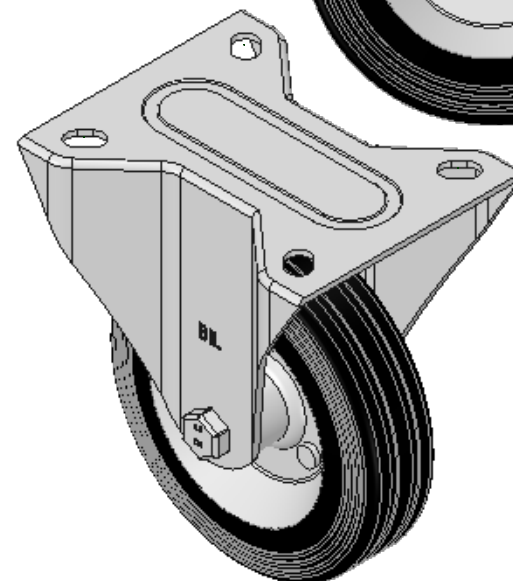
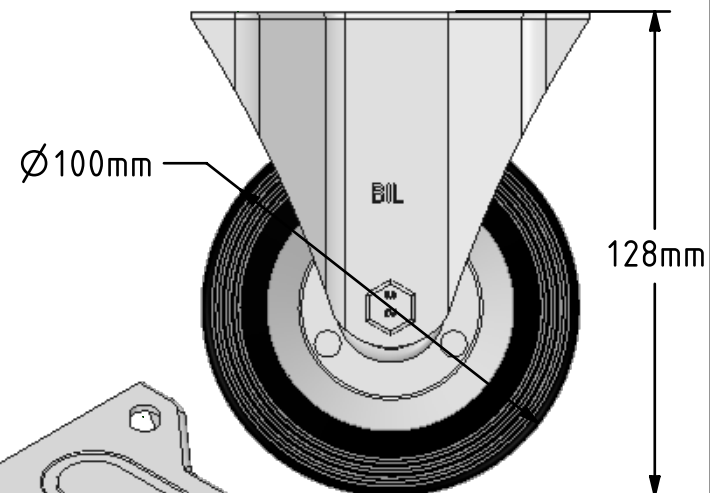
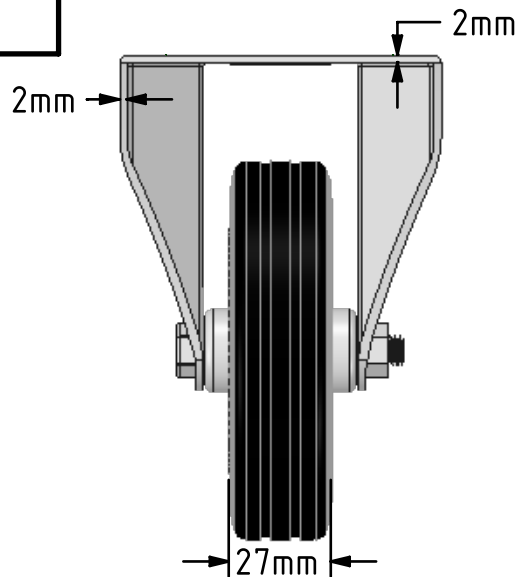
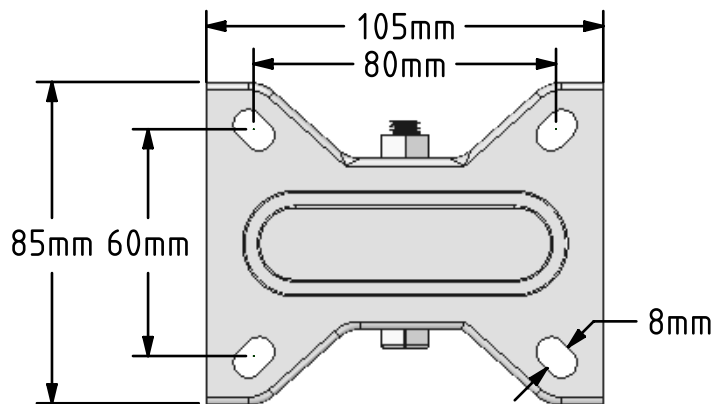


DRAWING DISCLAIMER
 COPYRIGHT OF THIS DRAWING IS RESERVED BY BIL GROUP LTD. IT IS ISSUED ON CONDITION THAT IT IS NOT REPRODUCED, COPIED, OR DISCLOSED TO A THIRD PARTY EITHER WHOLLY OR IN PART WITHOUT THE CONSENT IN WRITING OF BIL GROUP LTD.



Description:
 BZMMF100BSB

Pressed steel fixed castor with top plate fixing fitted with a black rubber tyre on steel disc centre with roller bearing. Wheel diameter 100mm, tread width 27mm, overall height 128mm, plate size 105mm x 85mm hole centres 80mm x 60mm. Load capacity 70kg.



| | NAME | DATE |
|-------------|---------|----------|
| DRAWN | Matt | 10/07/18 |
| APPROVED BY | Tim W | 10/07/18 |
| SCALE | 1:2 | 10/07/18 |
| WEIGHT | 0.583kg | 10/07/18 |



BIL Group Ltd, Porte Marsh Road, Calne
 Wiltshire, SN11 9BW, United Kingdom
 Tel +44 (0)1249 822 222 Fax: +44 (0)1249 822 300
 www.bilgroup.co.uk

TITLE

BZMMF100BSB

UNLESS OTHERWISE SPECIFIED DIMENSIONS ARE IN MILLIMETRES

Unspecified Tolerances
 Machining ± 0.25mm
 Fabrication ± 1mm

| SIZE | DWG NO. | REV |
|------|-----------------------|-----|
| A4 | BILCW03BZMMF100BSB_01 | 1 |

FILE NAME BILCW03BZMMF100BSB_01.PDF SHEET 1 OF 1