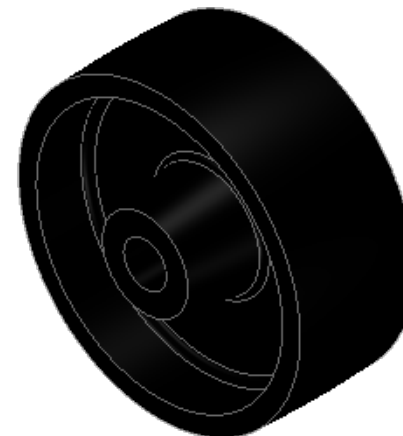
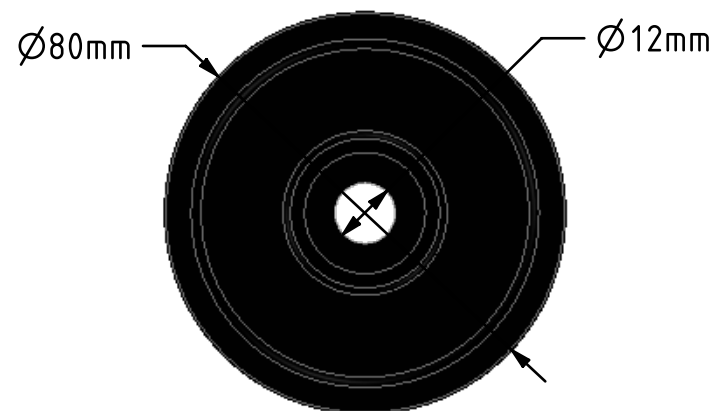
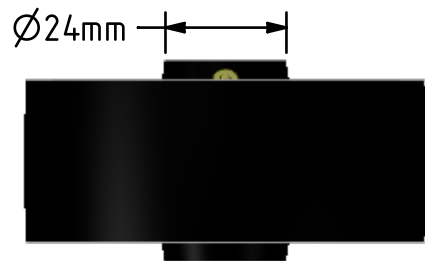
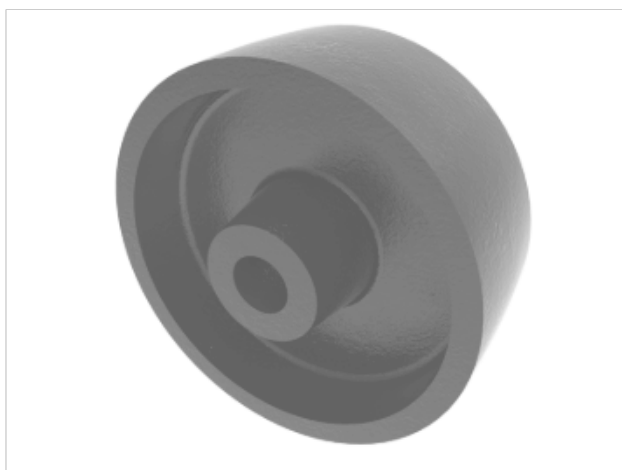



DRAWING DISCLAIMER  
 COPYRIGHT OF THIS DRAWING IS RESERVED BY BIL GROUP LTD. IT IS ISSUED ON CONDITION THAT IT IS NOT REPRODUCED, COPIED, OR DISCLOSED TO A THIRD PARTY EITHER WHOLLY OR IN PART WITHOUT THE CONSENT IN WRITING OF BIL GROUP LTD.



Description:  
 BZMM80WCI

Cast Iron wheel with a plain bearing.  
 Diameter 80mm, tread width 32mm, bore size 12mm, hub length 40mm. Load capacity 130kg.



	NAME	DATE	 BIL Group Ltd, Porte Marsh Road, Calne Wiltshire, SN11 9BW, United Kingdom Tel +44 (0)1249 822 222 Fax: +44 (0)1249 822 300 www.bilgroup.co.uk
DRAWN	Matt	25/03/19	
APPROVED BY	Chris	25/03/19	
SCALE	2:3	25/03/19	
WEIGHT	0.484kg	25/03/19	
UNLESS OTHERWISE SPECIFIED DIMENSIONS ARE IN MILLIMETRES  Unspecified Tolerances Machining ± 0.25mm Fabrication ± 1mm			TITLE <p style="text-align: center;">BZMM80WCI</p>
SIZE	DWG NO.		REV
A4	BILCW01BZMM80WCI_02		2
FILE NAME	BILCW01BZMM80WCI_02.PDF		SHEET 1 OF 1