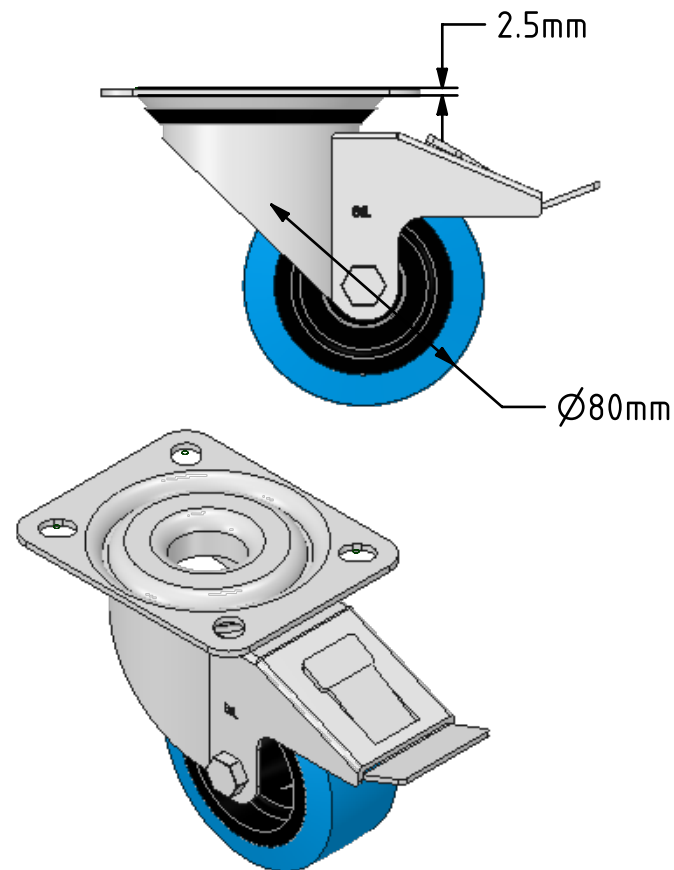
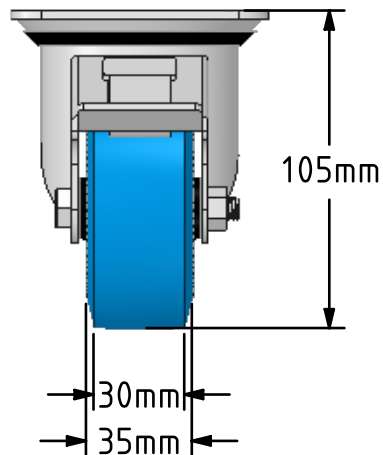
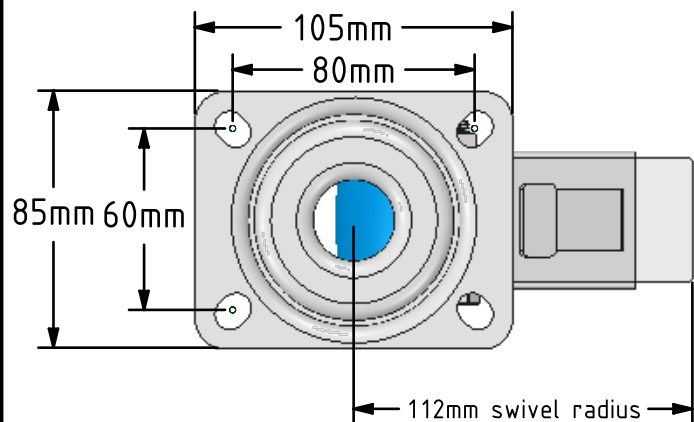
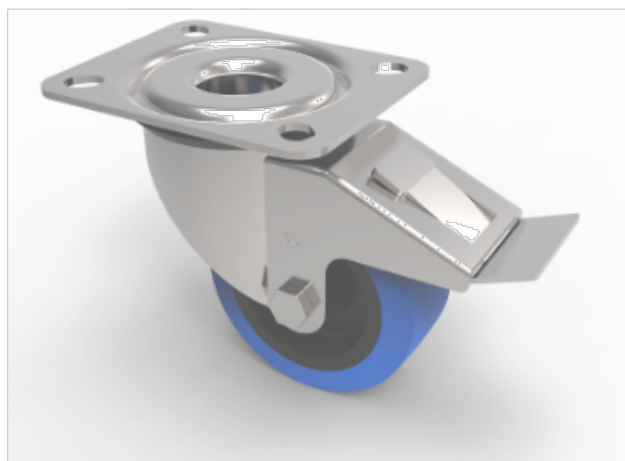



DRAWING DISCLAIMER
 COPYRIGHT OF THIS DRAWING IS RESERVED BY BIL GROUP LTD. IT IS ISSUED ON CONDITION THAT IT IS NOT REPRODUCED, COPIED, OR DISCLOSED TO A THIRD PARTY EITHER WHOLLY OR IN PART WITHOUT THE CONSENT IN WRITING OF BIL GROUP LTD.



Description:
 BZMM80RNSWB

Pressed steel swivel castor with top plate fixing fitted with a 65 shore A blue elastic rubber tyre on black nylon centred wheel with plain bearing and total lock brake. Wheel diameter 80mm, tread width 35mm, overall height 105mm, top plate 105mm x 80mm, hole centre 80mm x 60mm. Load capacity 150kg. REACH compliant also PAH-Free rubber to confirm to EU-directive 2005/69/EC



	NAME	DATE	BIL Group Ltd, Porte Marsh Road, Calne Wiltshire, SN11 9BW, United Kingdom Tel +44 (0)1249 822 222 Fax: +44 (0)1249 822 300 www.bilgroup.eu	
DRAWN	Matt	13/05/16		
APPROVED BY	Chris	13/05/16		
SCALE	2.5	13/05/16		
WEIGHT	0.72kg	13/05/16		
UNLESS OTHERWISE SPECIFIED DIMENSIONS ARE IN MILLIMETRES			TITLE	
Unspecified Tolerances Machining ± 0.25mm Fabrication ± 1mm			BZMM80RNSWB	
SIZE A4		DWG NO. BILCW03BZMM80RNSWB_01	REV 1	
FILE NAME BILCW03BZMM80RNSWB_01.PDF			SHEET 1 OF 1	