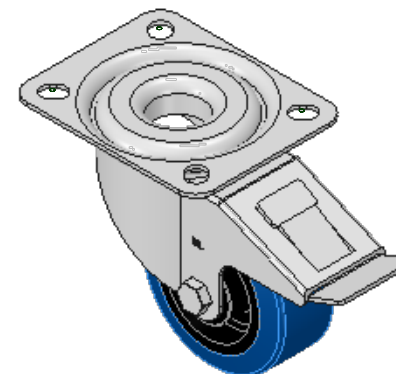
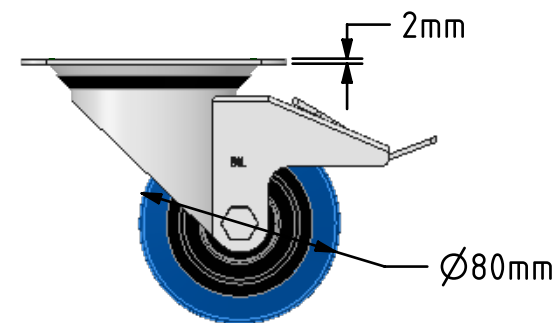
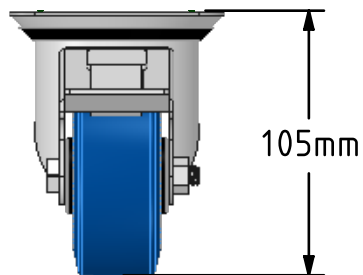
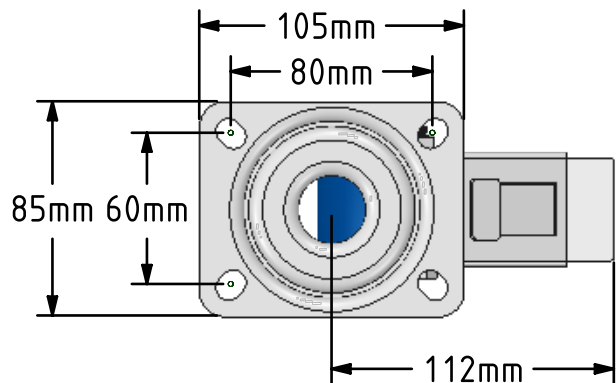


**DRAWING DISCLAIMER**

COPYRIGHT OF THIS DRAWING IS RESERVED BY BIL GROUP LTD. IT IS ISSUED ON CONDITION THAT IT IS NOT REPRODUCED, COPIED, OR DISCLOSED TO A THIRD PARTY EITHER WHOLLY OR IN PART WITHOUT THE CONSENT IN WRITING OF BIL GROUP LTD.



**Description:**  
BZMM80RNBSWB

Pressed steel swivel castor complete with a brake with top plate fixing fitted with a blue 65 shore A elastic rubber tyre on black nylon centred wheel with roller bearing. Wheel diameter 80mm, tread width 35mm, overall height 105mm, top plate 105mm x 85mm, hole centres 80mm x 60mm. Load capacity 150kg. REACH compliant also PAH-Free rubber to confirm to EU-directive 2005/69/EC



	NAME	DATE
DRAWN	Matt	07/11/16
APPROVED BY	Tim W	07/11/16
SCALE	1:3	07/11/16
WEIGHT	0.771kg	07/11/16

	BIL Group Ltd, Porte Marsh Road, Calne Wiltshire, SN11 9BW, United Kingdom Tel +44 (0)1249 822 222 Fax: +44 (0)1249 822 300 www.bilgroup.eu	
	TITLE <b>BZMM80RNBSWB</b>	

UNLESS OTHERWISE SPECIFIED DIMENSIONS ARE IN MILLIMETRES  Unspecified Tolerances Machining ± 0.25mm Fabrication ± 1mm		SIZE A4	DWG NO. BILCW03BZMM80RNBSWB_01	REV 1
FILE NAME BILCW03BZMM80RNBSWB_01.PDF		SHEET 1 OF 1		