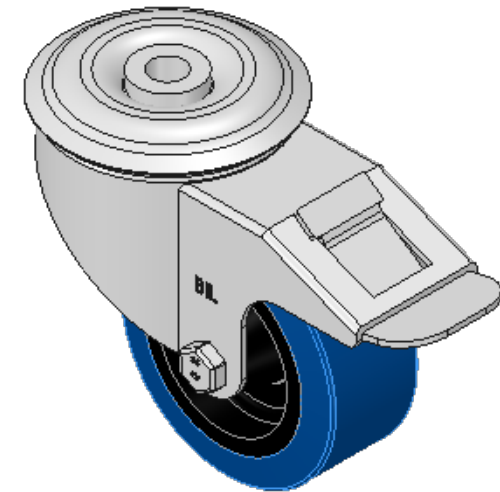
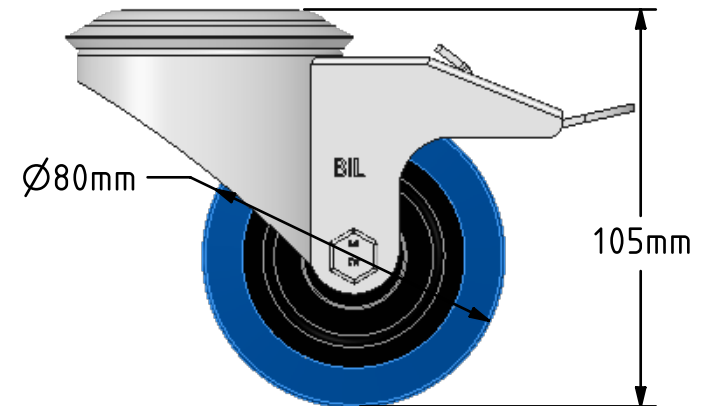
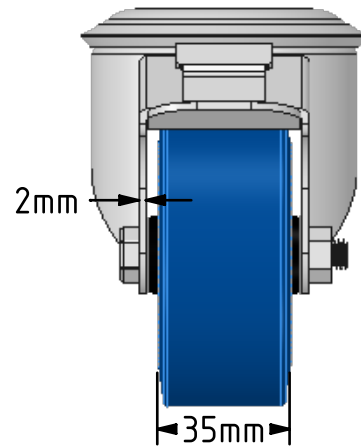
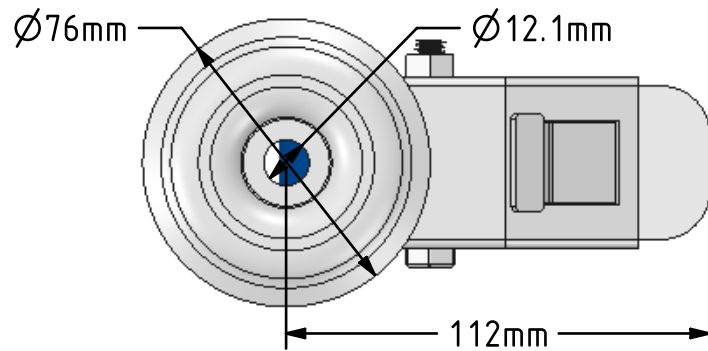


DRAWING DISCLAIMER

COPYRIGHT OF THIS DRAWING IS RESERVED BY BIL GROUP LTD. IT IS ISSUED ON CONDITION THAT IT IS NOT REPRODUCED, COPIED, OR DISCLOSED TO A THIRD PARTY EITHER WHOLLY OR IN PART WITHOUT THE CONSENT IN WRITING OF BIL GROUP LTD.

**Description:**
BZMM80RNBH12SWB

Pressed steel swivel castor with 12mm bolt hole fixing fitted with a 65 shore A blue elastic rubber tyre on black nylon centred wheel with plain bearing and total lock brake. Wheel diameter 80mm, tread width 35mm, overall height 105mm. Load capacity 150kg. REACH compliant also PAH-Free rubber to conform to EU-directive 2005/69/EC



	NAME	DATE
DRAWN	Matt	14/03/18
APPROVED BY	Tim W	14/03/18
SCALE	1:2	14/03/18
WEIGHT	0.726kg	14/03/18

UNLESS OTHERWISE SPECIFIED DIMENSIONS ARE IN MILLIMETRES

Unspecified Tolerances
Machining $\pm 0.25\text{mm}$
Fabrication $\pm 1\text{mm}$



BIL Group Ltd, Porte Marsh Road, Calne
Wiltshire, SN11 9BW, United Kingdom
Tel +44 (0)1249 822 222 Fax: +44 (0)1249 822 300
www.bilgroup.co.uk

TITLE

BZMM80RNBH12SWB

SIZE DWG NO.

A4

BILCW03BZMM80RNBH12SWB__01

REV

1

FILE NAME BILCW03BZMM80RNBH12SWB__01.PDF SHEET 1 OF 1