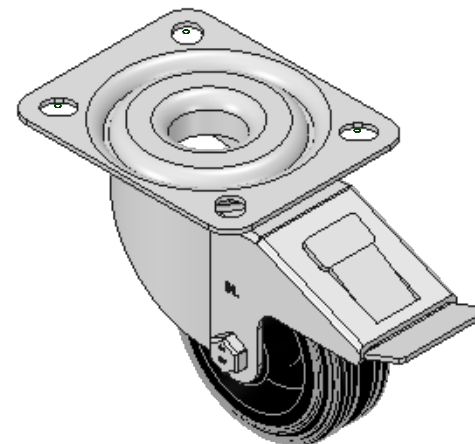
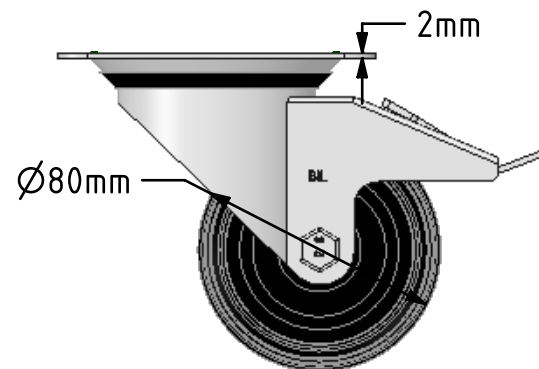
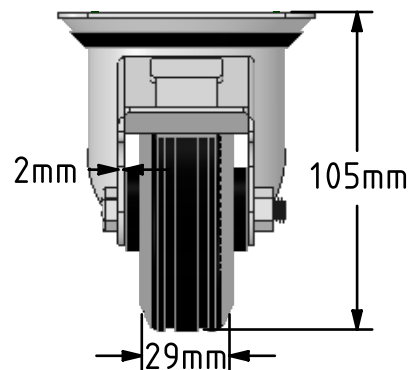
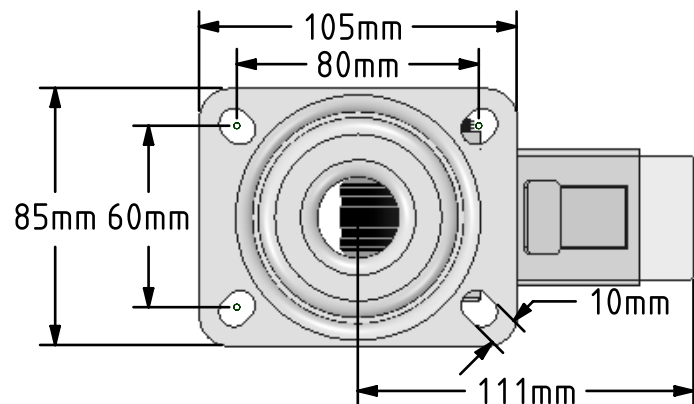


DRAWING DISCLAIMER  
 COPYRIGHT OF THIS DRAWING IS RESERVED BY BIL GROUP LTD. IT IS ISSUED ON CONDITION THAT IT IS NOT REPRODUCED, COPIED, OR DISCLOSED TO A THIRD PARTY EITHER WHOLLY OR IN PART WITHOUT THE CONSENT IN WRITING OF BIL GROUP LTD.



Description:  
 BZMM80PSBSWB

Pressed steel swivel castor with a top plate fixing fitted with a black rubber tyred black polypropylene centred wheel with roller bearing and total lock brake. Wheel diameter 80mm, tread width 29mm, overall height 105mm, top plate 105mm, hole centres 80mm x 60mm. Load capacity 50kg.



	NAME	DATE
DRAWN	Matt	14/03/18
APPROVED BY	Tim W	14/03/18
SCALE	2:5	14/03/18
WEIGHT	0.754kg	14/03/18

UNLESS OTHERWISE SPECIFIED DIMENSIONS ARE IN MILLIMETRES

Unspecified Tolerances  
 Machining ± 0.25mm  
 Fabrication ± 1mm

	BIL Group Ltd, Porte Marsh Road, Calne Wiltshire, SN11 9BW, United Kingdom Tel +44 (0)1249 822 222 Fax: +44 (0)1249 822 300 www.bilgroup.co.uk	
	TITLE <b>BZMM80PSBSWB</b>	

SIZE	DWG NO.	REV
A4	BILCW03BZMM80PSBSWB_01	1
FILE NAME	BILCW03BZMM80PSBSWB_01.PDF SHEET 1 OF 1	