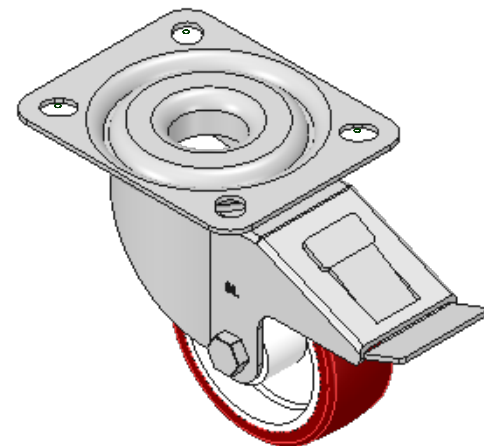
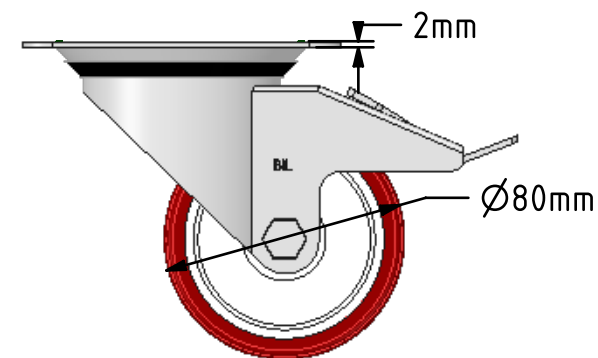
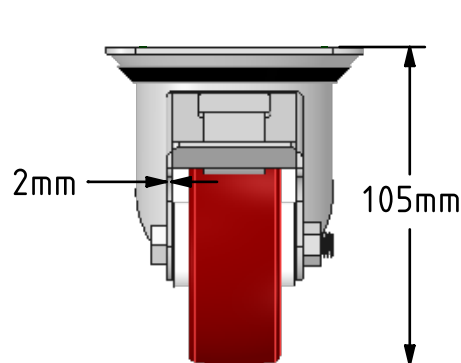
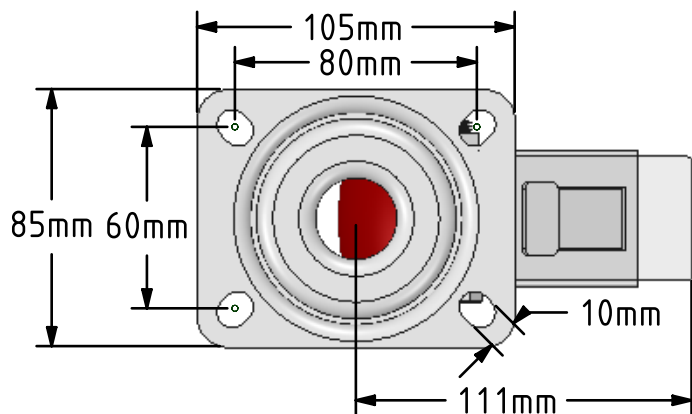


DRAWING DISCLAIMER
 COPYRIGHT OF THIS DRAWING IS RESERVED BY BIL GROUP LTD. IT IS ISSUED ON CONDITION THAT IT IS NOT REPRODUCED, COPIED, OR DISCLOSED TO A THIRD PARTY EITHER WHOLLY OR IN PART WITHOUT THE CONSENT IN WRITING OF BIL GROUP LTD.



Description:
 BZMM80PNSWB

Pressed steel swivel castor with a top plate fixing fitted with a brown polyurethane tyred on white nylon centred wheel with a plain bearing and total lock brake. Wheel diameter 80mm, tread width 30mm, overall height 105mm, plate size 105mm x 85mm, hole centres 80mm x 60mm. Load capacity 100kg.



	NAME	DATE
DRAWN	Matt	20/09/17
APPROVED BY	Tim W	20/09/17
SCALE	2:5	20/09/17
WEIGHT	0.707kg	20/09/17

UNLESS OTHERWISE SPECIFIED DIMENSIONS ARE IN MILLIMETRES

Unspecified Tolerances
 Machining ± 0.25mm
 Fabrication ± 1mm



BIL Group Ltd, Porte Marsh Road, Calne
 Wiltshire, SN11 9BW, United Kingdom
 Tel +44 (0)1249 822 222 Fax: +44 (0)1249 822 300
 www.bilgroup.co.uk

TITLE

BZMM80PNSWB

SIZE	DWG NO.	REV
A4	BILCW03BZMM80PNSWB_01	1

FILE NAME BILCW03BZMM80PNSWB_01.PDF SHEET 1 OF 1