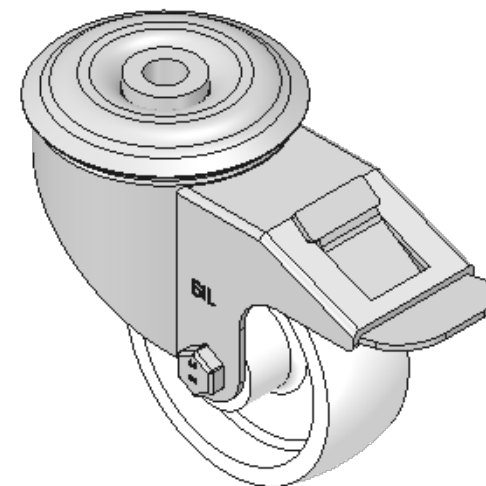
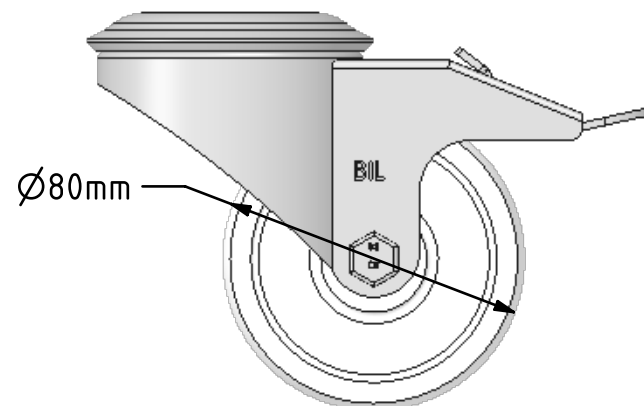
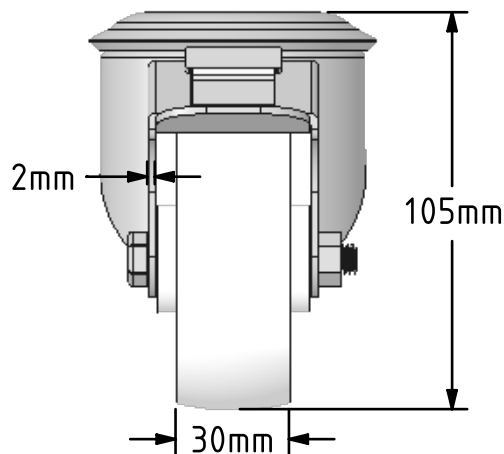
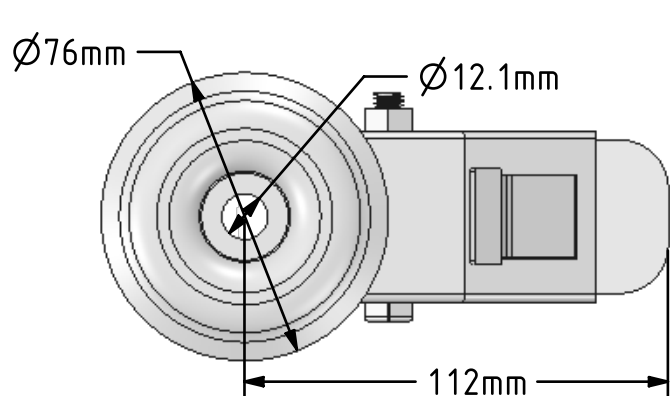


DRAWING DISCLAIMER  
 COPYRIGHT OF THIS DRAWING IS RESERVED BY BIL GROUP LTD. IT IS ISSUED ON CONDITION THAT IT IS NOT REPRODUCED, COPIED, OR DISCLOSED TO A THIRD PARTY EITHER WHOLLY OR IN PART WITHOUT THE CONSENT IN WRITING OF BIL GROUP LTD.



Description:  
 BZMM80NYBBH12SWB

Pressed steel swivel castor with a 12mm bolt hole fixing fitted with a white nylon centre with a roller bearing and total lock brake. Wheel diameter 80mm, tread width 30mm, overall height 105mm. Load capacity 150kg.



	NAME	DATE
DRAWN	Matt	10/08/18
APPROVED BY	Kevin	10/08/18
SCALE	1:2	10/08/18
WEIGHT	0.681kg	10/08/18



BIL Group Ltd, Porte Marsh Road, Calne  
 Wiltshire, SN11 9BW, United Kingdom  
 Tel +44 (0)1249 822 222 Fax: +44 (0)1249 822 300  
 www.bilgroup.co.uk

TITLE	
BZMM80NYBBH12SWB	
SIZE	DWG NO.
A4	BILCW03BZMM80NYBBH12SWB_01
REV	1
FILE NAME BILCW03BZMM80NYBBH12SWB_01.PDF SHEET 1 OF 1	

UNLESS OTHERWISE SPECIFIED DIMENSIONS ARE IN MILLIMETRES

Unspecified Tolerances  
 Machining ± 0.25mm  
 Fabrication ± 1mm