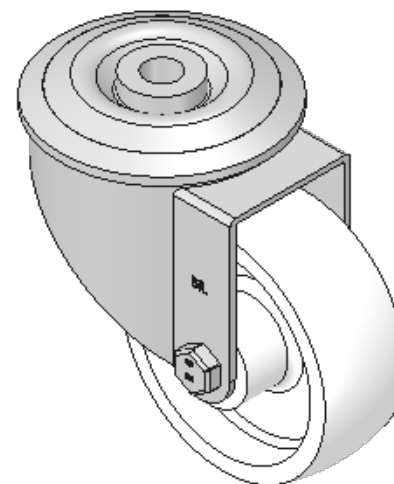
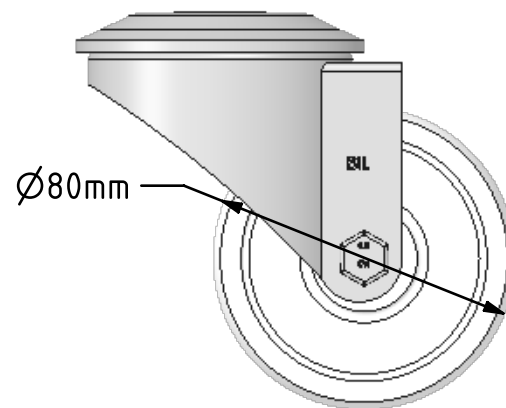
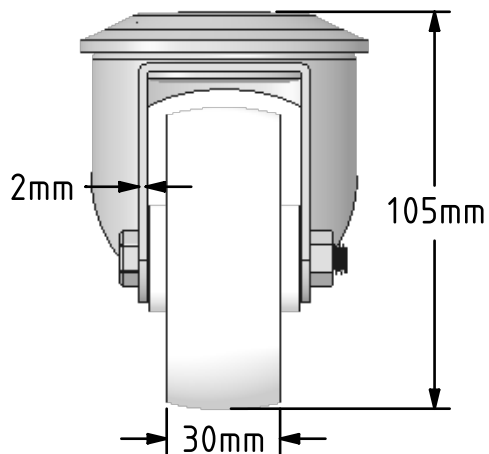
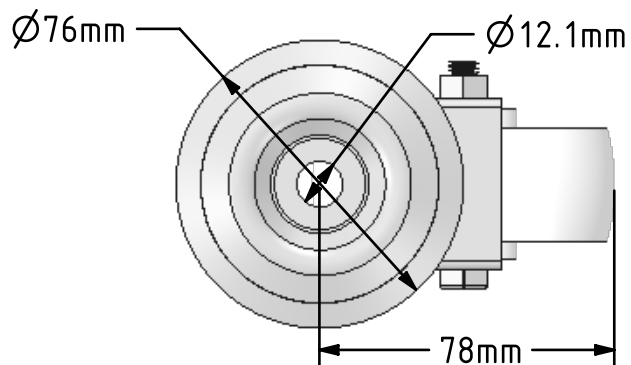



DRAWING DISCLAIMER
 COPYRIGHT OF THIS DRAWING IS RESERVED BY BIL GROUP LTD. IT IS ISSUED ON CONDITION THAT IT IS NOT REPRODUCED, COPIED, OR DISCLOSED TO A THIRD PARTY EITHER WHOLLY OR IN PART WITHOUT THE CONSENT IN WRITING OF BIL GROUP LTD.



Description:
 BZMM80NYBBH12

Pressed steel swivel castor with a 12mm bolt hole fixing fitted with a white nylon centre with a roller bearing. Wheel diameter 80mm, tread width 30mm, overall height 105mm. Load capacity 150kg.



	NAME	DATE	 BIL Group Ltd, Porte Marsh Road, Calne Wiltshire, SN11 9BW, United Kingdom Tel +44 (0)1249 822 222 Fax: +44 (0)1249 822 300 www.bilgroup.co.uk
DRAWN	Matt	09/08/18	
APPROVED BY	Tim W	09/08/18	
SCALE	1:2	09/08/18	
WEIGHT	0.575kg	09/08/18	
UNLESS OTHERWISE SPECIFIED DIMENSIONS ARE IN MILLIMETRES Unspecified Tolerances Machining ± 0.25mm Fabrication ± 1mm			TITLE BZMM80NYBBH12
SIZE	DWG NO.		REV
A4	BILCW03BZMM80NYBBH12_01		1
FILE NAME			SHEET 1 OF 1
BILCW03BZMM80NYBBH12_01.PDF			