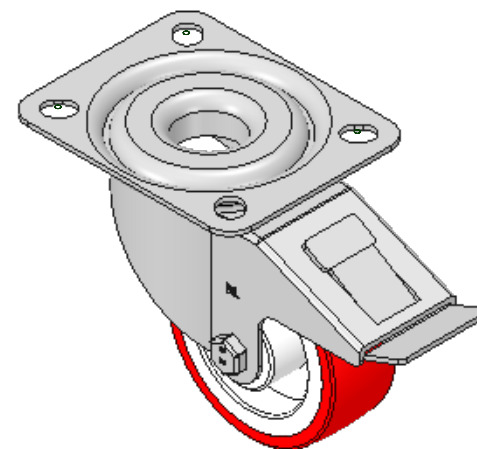
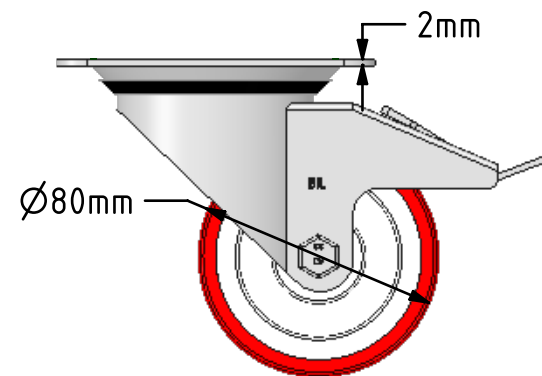
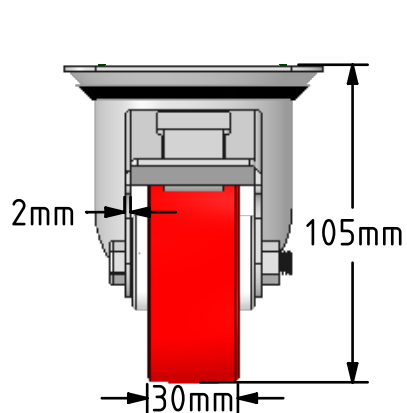
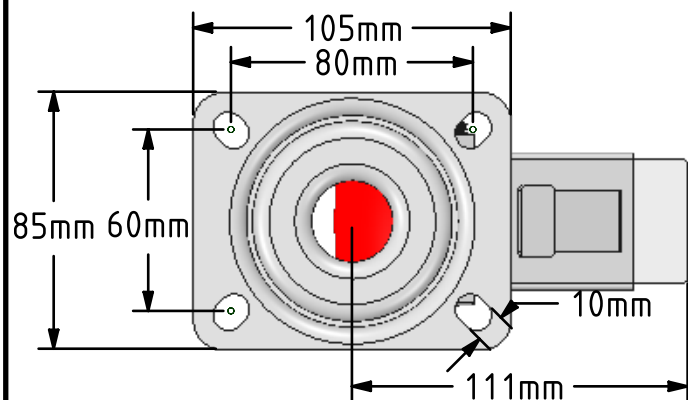



DRAWING DISCLAIMER
 COPYRIGHT OF THIS DRAWING IS RESERVED BY BIL GROUP LTD. IT IS ISSUED ON CONDITION THAT IT IS NOT REPRODUCED, COPIED, OR DISCLOSED TO A THIRD PARTY EITHER WHOLLY OR IN PART WITHOUT THE CONSENT IN WRITING OF BIL GROUP LTD.



Description:
 BZMM80NPBSWB

Pressed steel swivel castor with top plate fixing fitted with a red polyurethane tyre on white nylon centred wheel with roller bearing and total lock brake. Wheel diameter 80mm, tread width 25mm, overall height 106mm, top plate 105mm x 85mm, hole centres 80mm x 60mm. Load capacity 150kg.



	NAME	DATE	 BIL Group Ltd, Porte Marsh Road, Calne Wiltshire, SN11 9BW, United Kingdom Tel +44 (0)1249 822 222 Fax: +44 (0)1249 822 300 www.bilgroup.co.uk
DRAWN	Matt	15/03/18	
APPROVED BY	Tim W	15/03/18	
SCALE	2:5	15/03/18	
WEIGHT	0.759kg	15/03/18	TITLE
UNLESS OTHERWISE SPECIFIED DIMENSIONS ARE IN MILLIMETRES Unspecified Tolerances Machining ± 0.25mm Fabrication ± 1mm			BZMM80NPBSWB
SIZE		DWG NO.	REV
A4		BILCW03BZMM80NPBSWB_01	1
FILE NAME			SHEET 1 OF 1
BILCW03BZMM80NPBSWB_01.PDF			