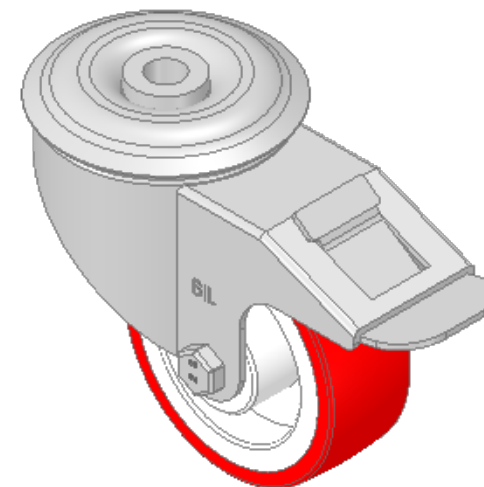
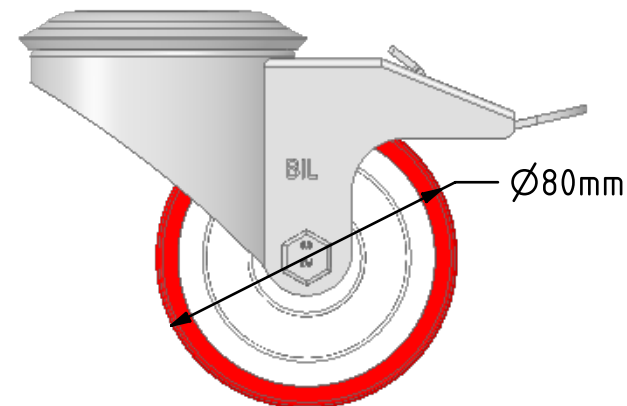
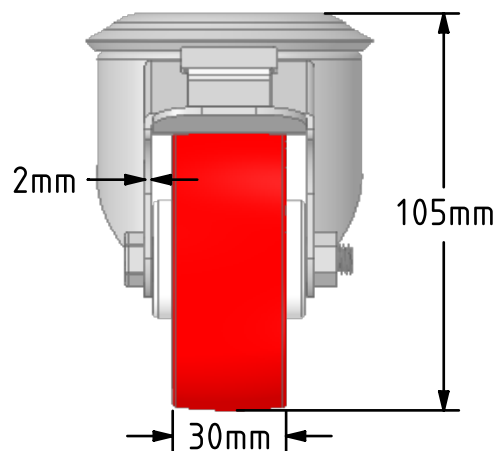
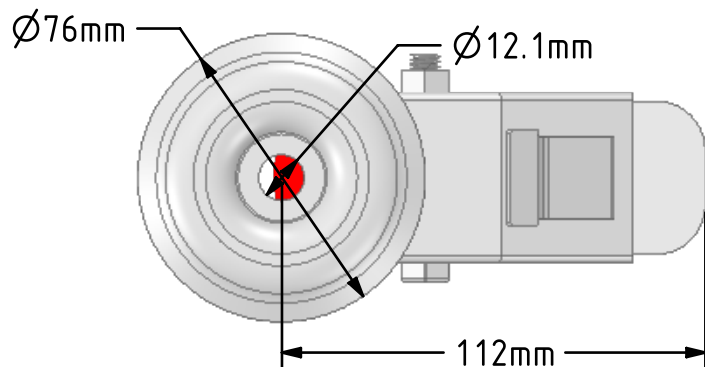


DRAWING DISCLAIMER
 COPYRIGHT OF THIS DRAWING IS RESERVED BY BIL GROUP LTD. IT IS ISSUED ON CONDITION THAT IT IS NOT REPRODUCED, COPIED, OR DISCLOSED TO A THIRD PARTY EITHER WHOLLY OR IN PART WITHOUT THE CONSENT IN WRITING OF BIL GROUP LTD.



Description:
 BZMM80NPBBH12SWB

Pressed steel swivel castor with 12mm bolt hole fixing fitted with red polyurethane tyre on white nylon centred wheel with roller bearing and total lock brake. Wheel diameter 80mm, tread width 30mm, overall height 105mm. Load capacity 150kg.



	NAME	DATE
DRAWN	Matt	28/08/18
APPROVED BY	Tim W	28/08/18
SCALE	1:2	28/08/18
WEIGHT	0.743kg	28/08/18

 BIL Group Ltd, Porte Marsh Road, Calne
 Wiltshire, SN11 9BW, United Kingdom
 Tel +44 (0)1249 822 222 Fax: +44 (0)1249 822 300
 www.bilgroup.co.uk

TITLE
 BZMM80NPBBH12SWB

UNLESS OTHERWISE SPECIFIED DIMENSIONS ARE IN MILLIMETRES
 Unspecified Tolerances
 Machining ± 0.25mm
 Fabrication ± 1mm

SIZE	DWG NO.	REV
A4	BILCW03BZMM80NPBBH12SWB_01	1

FILE NAME BILCW03BZMM80NPBBH12SWB_01.PDF SHEET 1 OF 1