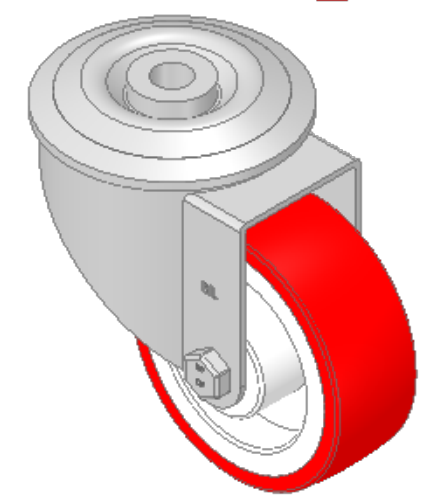
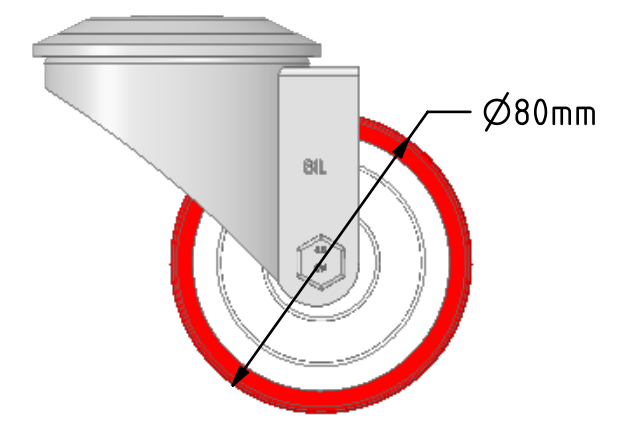
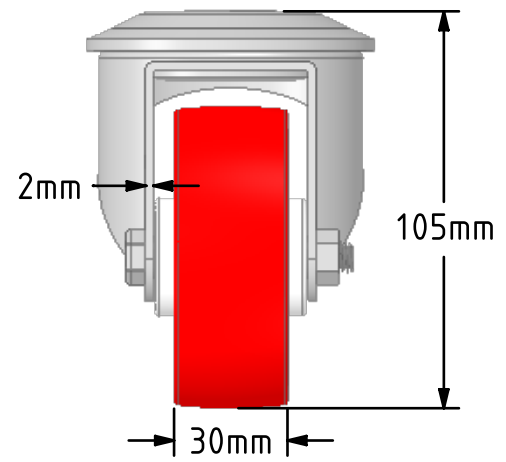
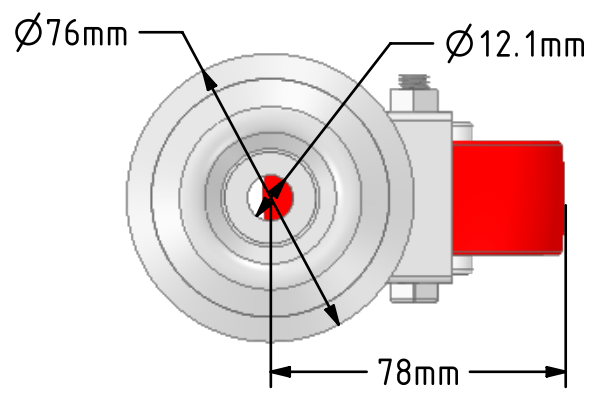
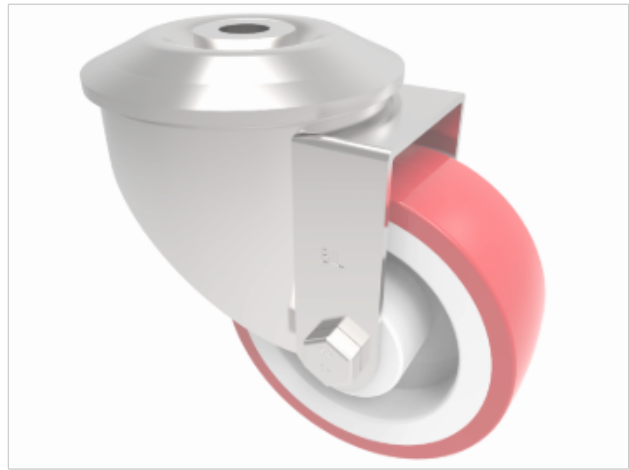


DRAWING DISCLAIMER
 COPYRIGHT OF THIS DRAWING IS RESERVED BY BIL GROUP LTD. IT IS ISSUED ON CONDITION THAT IT IS NOT REPRODUCED, COPIED, OR DISCLOSED TO A THIRD PARTY EITHER WHOLLY OR IN PART WITHOUT THE CONSENT IN WRITING OF BIL GROUP LTD.



Description:
BZMM80NPBBH12
 Pressed steel swivel castor with 12mm bolt hole fixing fitted with a red polyurethane tyre on white nylon centred wheel with roller bearing. Wheel diameter 80mm, tread width 30mm, overall height 105mm. Load capacity 150kg.



	NAME	DATE
DRAWN	Matt	28/08/18
APPROVED BY	Tim W	28/08/18
SCALE	1:2	28/08/18
WEIGHT	0.637kg	28/08/18

BIL Group Ltd, Porte Marsh Road, Calne
 Wiltshire, SN11 9BW, United Kingdom
 Tel +44 (0)1249 822 222 Fax: +44 (0)1249 822 300
 www.bilgroup.co.uk

TITLE
BZMM80NPBBH12

UNLESS OTHERWISE SPECIFIED DIMENSIONS ARE IN MILLIMETRES
 Unspecified Tolerances
 Machining ± 0.25mm
 Fabrication ± 1mm

SIZE	DWG NO.	REV
A4	BILCW03BZMM80NPBBH12_01	1

FILE NAME BILCW03BZMM80NPBBH12_01.PDF SHEET 1 OF 1