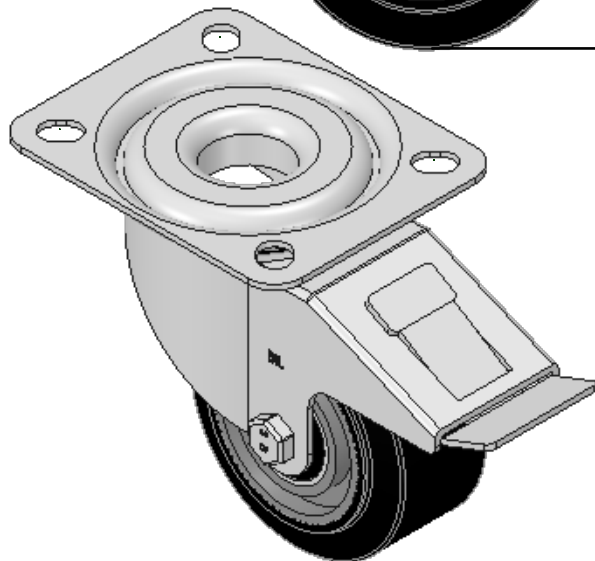
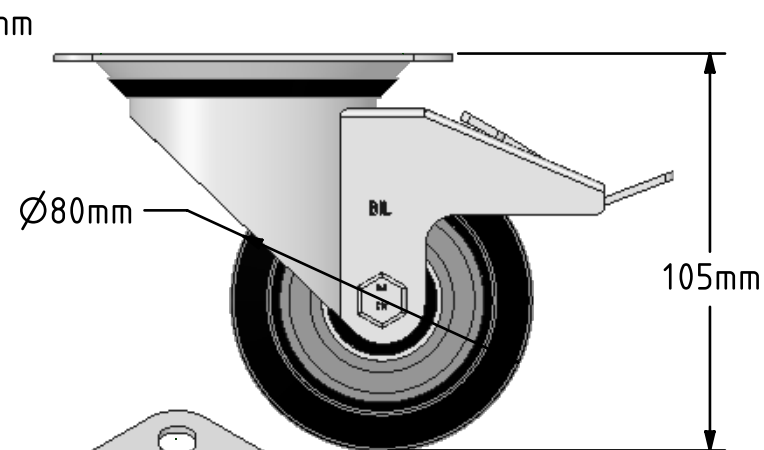
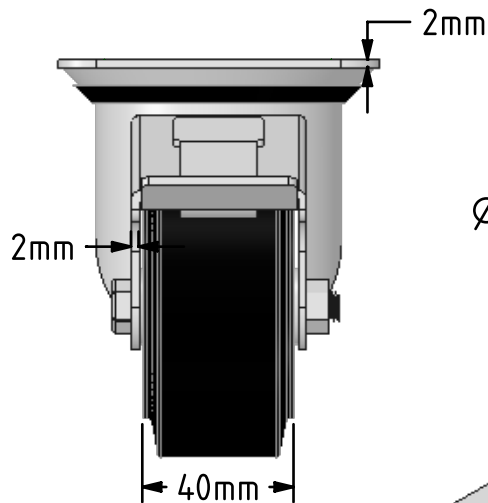
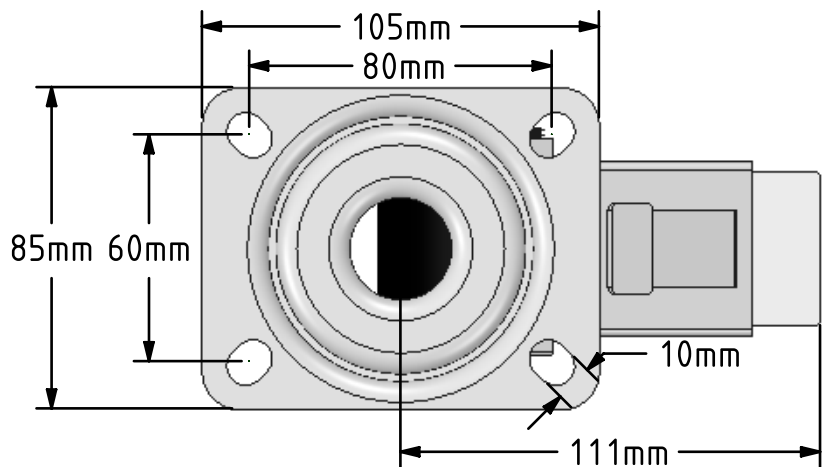


DRAWING DISCLAIMER  
 COPYRIGHT OF THIS DRAWING IS RESERVED BY BIL GROUP LTD. IT IS ISSUED ON CONDITION THAT IT IS NOT REPRODUCED, COPIED, OR DISCLOSED TO A THIRD PARTY EITHER WHOLLY OR IN PART WITHOUT THE CONSENT IN WRITING OF BIL GROUP LTD.



Description:  
 BZMM80ERBJSWB

Pressed steel swivel castor with top plate fixing fitted with a black high elastic natural 65 shore A rubber tyre on aluminium centred wheel with ball bearing with total lock brake. Wheel diameter 80mm, tread width 40mm, overall height 105mm, top plate 105mm x 85mm, hole centres 80mm x 60mm. Load capacity 180kg. REACH compliant also PAH-Free rubber to confirm to EU-directive 2005/69/EC



	NAME	DATE
DRAWN	Matt	31/07/18
APPROVED BY	Chris	31/07/18
SCALE	1:2	31/07/18
WEIGHT	0.939kg	31/07/18

**BIL**  
 BIL Group Ltd, Porte Marsh Road, Calne  
 Wiltshire, SN11 9BW, United Kingdom  
 Tel +44 (0)1249 822 222 Fax: +44 (0)1249 822 300  
 www.bilgroup.co.uk

TITLE		REV
BZMM80ERBJSWB		1
SIZE	DWG NO.	
A4	BILCW03BZMM80ERBJSWB_01	

UNLESS OTHERWISE SPECIFIED DIMENSIONS ARE IN MILLIMETRES  
 Unspecified Tolerances  
 Machining ± 0.25mm  
 Fabrication ± 1mm

FILE NAME BILCW03BZMM80ERBJSWB\_01.PDF SHEET 1 OF 1