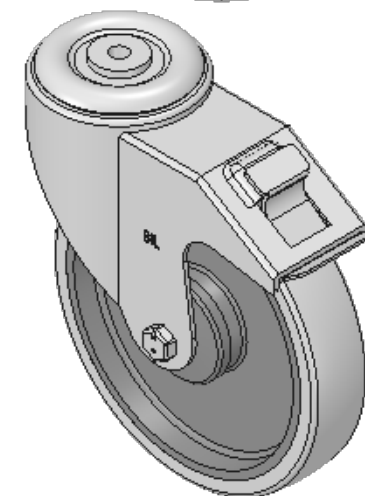
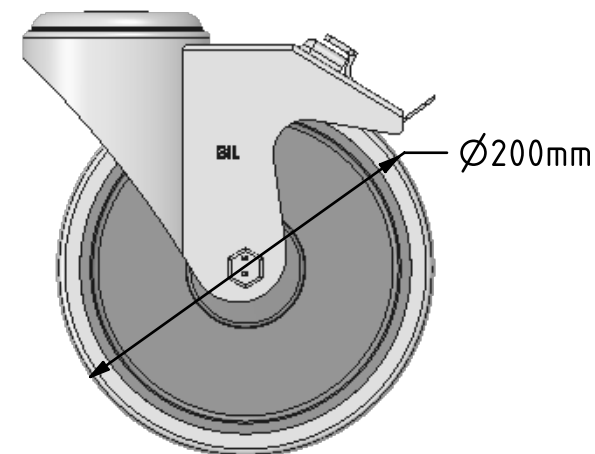
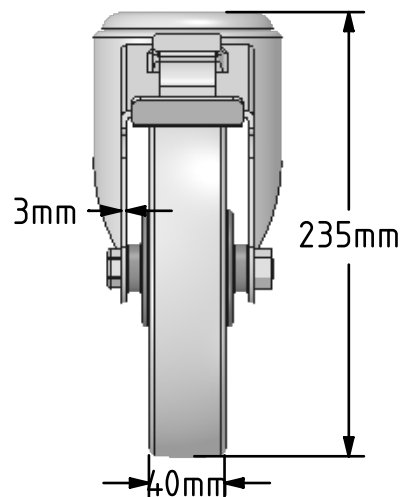
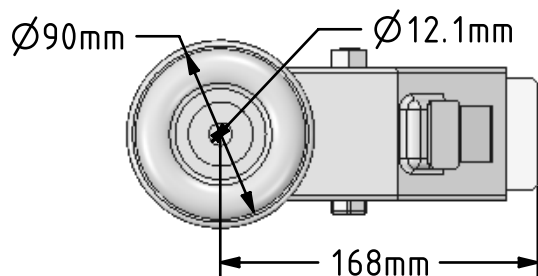


**DRAWING DISCLAIMER**


COPYRIGHT OF THIS DRAWING IS RESERVED BY BIL GROUP LTD. IT IS ISSUED ON CONDITION THAT IT IS NOT REPRODUCED, COPIED, OR DISCLOSED TO A THIRD PARTY EITHER WHOLLY OR IN PART WITHOUT THE CONSENT IN WRITING OF BIL GROUP LTD.

**Description:**

BZMM200STPRBJBH12SWB

Pressed steel swivel castor with 12mm bolt hole fitted with a 65 shore A grey thermoplastic rubber tyre on grey polypropylene centre wheel with single ball bearing with retaining caps and a total lock brake. Wheel diameter 200mm, tread width 40mm, overall height 235mm, Load capacity 220kg. REACH compliant also PAH-Free rubber to confirm to EU-directive 2005/69/EC



	NAME	DATE	 BIL Group Ltd, Porte Marsh Road, Calne Wiltshire, SN11 9BW, United Kingdom Tel +44 (0)1249 822 222 Fax: +44 (0)1249 822 300 www.bilgroup.co.uk	
DRAWN	Matt	22/01/18		
APPROVED BY	Chris	22/01/18		
SCALE	1:4	22/01/18		
WEIGHT	2.374kg	22/01/18		
UNLESS OTHERWISE SPECIFIED DIMENSIONS ARE IN MILLIMETRES			TITLE	
Unspecified Tolerances Machining $\pm 0.25\text{mm}$ Fabrication $\pm 1\text{mm}$			BZMM200STPRBJBH12SWB	
			SIZE A4	REV 1
			FILE NAME BILCW03BZMM200STPRBJBH12SWB_01.PDF SHEET 1 OF 1	