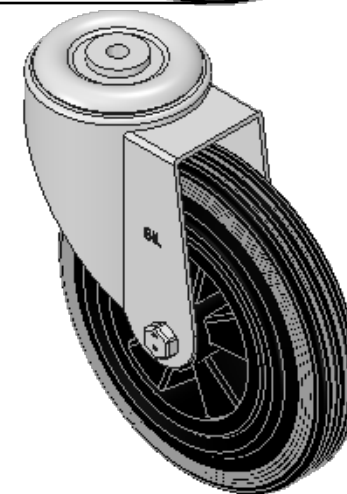
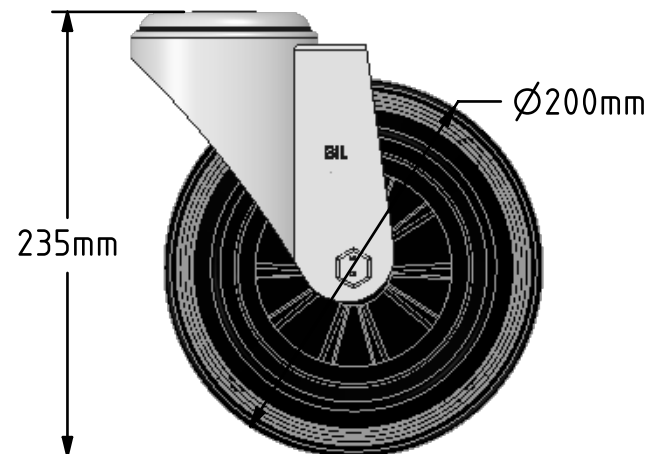
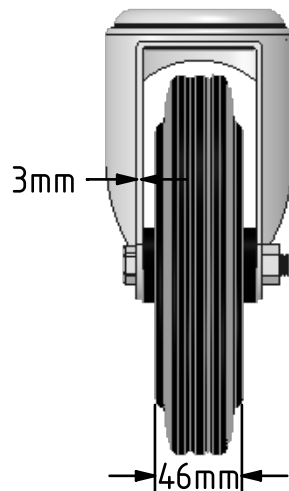
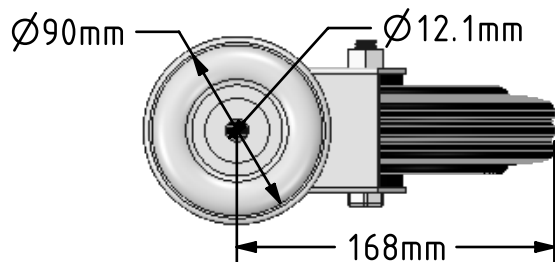



DRAWING DISCLAIMER
 COPYRIGHT OF THIS DRAWING IS RESERVED BY BIL GROUP LTD. IT IS ISSUED ON CONDITION THAT IT IS NOT REPRODUCED, COPIED, OR DISCLOSED TO A THIRD PARTY EITHER WHOLLY OR IN PART WITHOUT THE CONSENT IN WRITING OF BIL GROUP LTD.



Description:
 BZMM200PSBH12

Pressed steel swivel castor with a 12mm bolt hole fitted with a black rubber tyre on black polypropylene centred wheel with a plain bore. Wheel diameter 200mm, tread width 50mm, overall height 235mm, Load capacity 205kg.



	NAME	DATE	BIL Group Ltd, Porte Marsh Road, Calne Wiltshire, SN11 9BW, United Kingdom Tel +44 (0)1249 822 222 Fax: +44 (0)1249 822 300 www.bilgroup.co.uk	
DRAWN	Matt	22/01/18	 TITLE BZMM200PSBH12	
APPROVED BY	Chris	22/01/18		
SCALE	1:4	22/01/18		
WEIGHT	2.626kg	22/01/18		
UNLESS OTHERWISE SPECIFIED DIMENSIONS ARE IN MILLIMETRES			SIZE	DWG NO.
Unspecified Tolerances Machining ± 0.25mm Fabrication ± 1mm			A4	BILCW03BZMM200PSBH12_01
			FILE NAME	BILCW03BZMM200PSBH12_01.PDF
			SHEET	1 OF 1