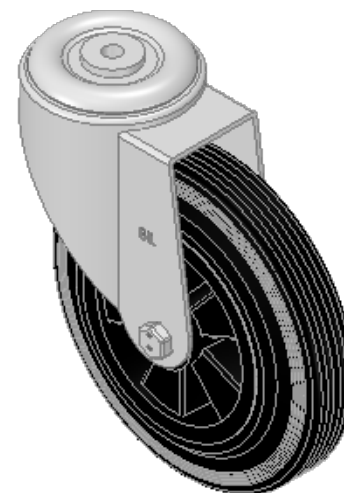
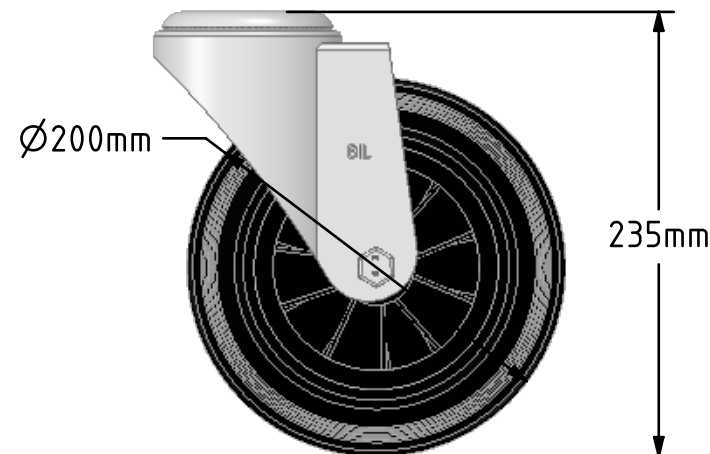
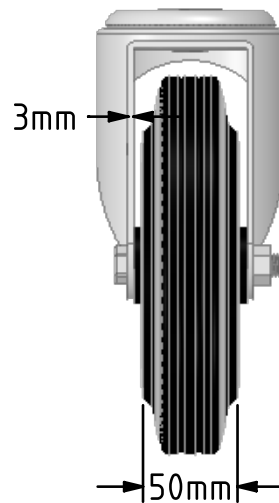
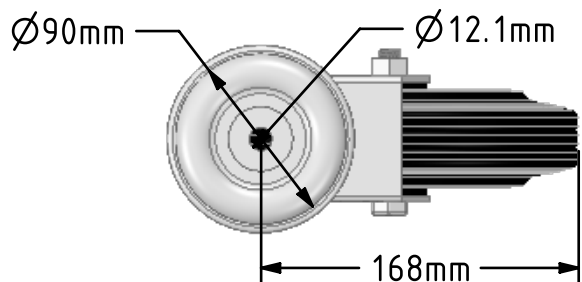


DRAWING DISCLAIMER
 COPYRIGHT OF THIS DRAWING IS RESERVED BY BIL GROUP LTD. IT IS ISSUED ON CONDITION THAT IT IS NOT REPRODUCED, COPIED, OR DISCLOSED TO A THIRD PARTY EITHER WHOLLY OR IN PART WITHOUT THE CONSENT IN WRITING OF BIL GROUP LTD.



Description:
 BZMM200PSBBH12

Pressed steel swivel castor with a 12mm bolt hole fitted with a black rubber tyre on black polypropylene centred wheel with a roller bearing. Wheel diameter 200mm, tread width 50mm, overall height 235mm, Load capacity 205kg.



	NAME	DATE
DRAWN	Matt	31/08/18
APPROVED BY	Chris	31/08/18
SCALE	1:4	31/08/18
WEIGHT	2.662kg	31/08/18



BIL Group Ltd, Porte Marsh Road, Calne
 Wiltshire, SN11 9BW, United Kingdom
 Tel +44 (0)1249 822 222 Fax: +44 (0)1249 822 300
 www.bilgroup.co.uk

TITLE

BZMM200PSBBH12

UNLESS OTHERWISE SPECIFIED DIMENSIONS ARE IN MILLIMETRES

Unspecified Tolerances
 Machining ± 0.25mm
 Fabrication ± 1mm

SIZE	DWG NO.	REV
A4	BILCW03BZMM200PSBBH12_01	1

FILE NAME BILCW03BZMM200PSBBH12_01.PDF SHEET 1 OF 1