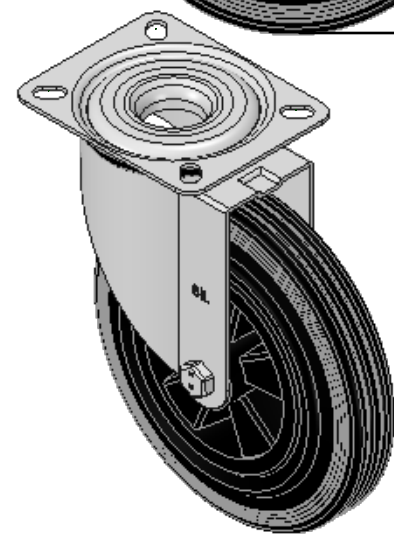
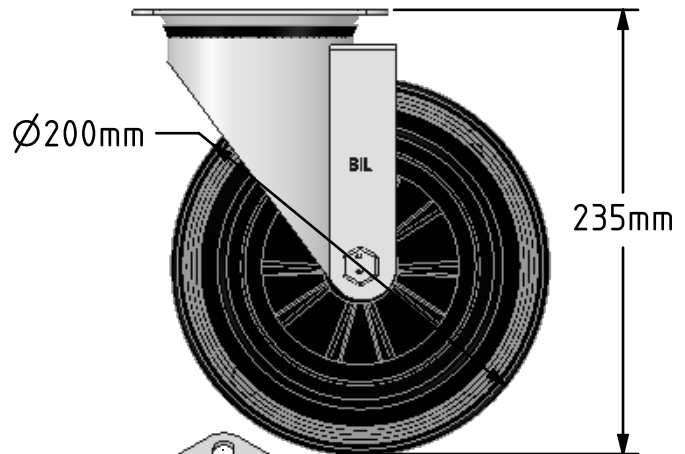
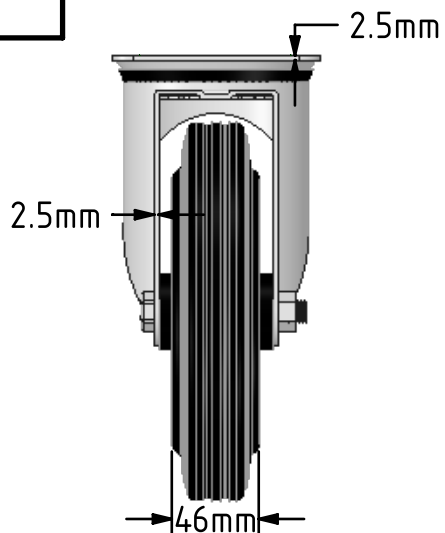
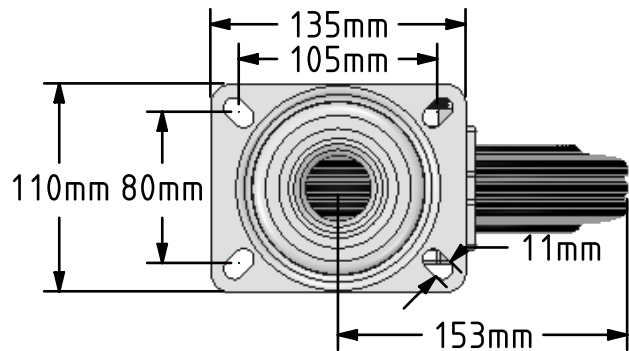
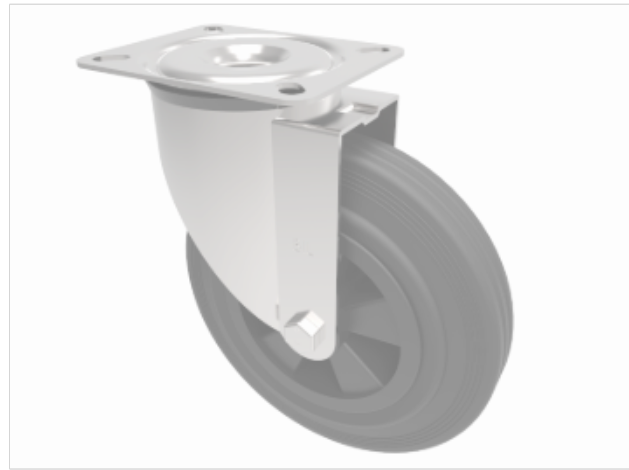



DRAWING DISCLAIMER
 COPYRIGHT OF THIS DRAWING IS RESERVED BY BIL GROUP LTD. IT IS ISSUED ON CONDITION THAT IT IS NOT REPRODUCED, COPIED, OR DISCLOSED TO A THIRD PARTY EITHER WHOLLY OR IN PART WITHOUT THE CONSENT IN WRITING OF BIL GROUP LTD.



Description:
 BZMM200PS
 Pressed steel swivel castor with a top plate fixing fitted with a black rubber wheel on a black polypropylene centre with a plain bearing. Wheel diameter 200mm, tread width 50mm, overall height 235mm, top plate 135mm x 110mm, hole centres 105mm x 80mm. Load capacity 205kg.



	NAME	DATE	 BIL Group Ltd, Porte Marsh Road, Calne Wiltshire, SN11 9BW, United Kingdom Tel +44 (0)1249 822 222 Fax: +44 (0)1249 822 300 www.bilgroup.co.uk
DRAWN	Matt	28/02/18	
APPROVED BY	Tim W	28/02/18	
SCALE	1:4	28/02/18	
WEIGHT	2.473kg	28/02/18	TITLE
UNLESS OTHERWISE SPECIFIED DIMENSIONS ARE IN MILLIMETRES Unspecified Tolerances Machining ± 0.25mm Fabrication ± 1mm			BZMM200PS
SIZE		DWG NO.	REV
A4		BILCW03BZMM200PS_02	2
FILE NAME		BILCW03BZMM200PS_02.PDF	SHEET 1 OF 1