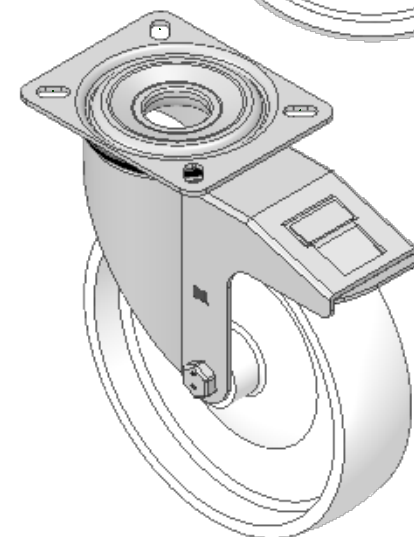
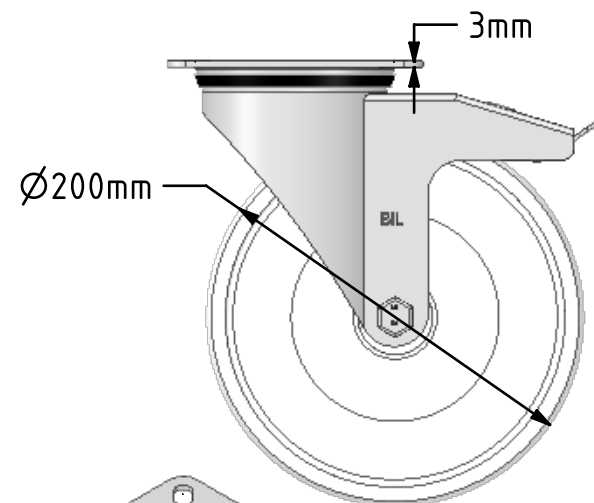
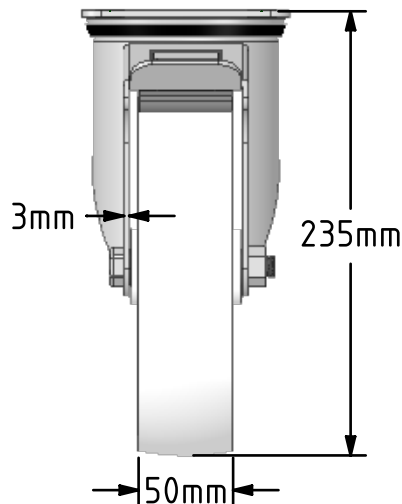
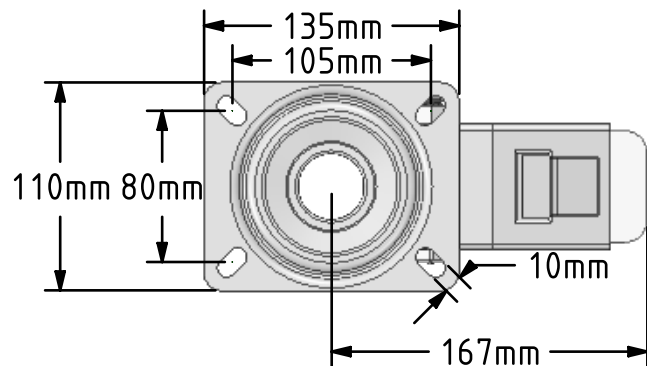


**DRAWING DISCLAIMER**  
 COPYRIGHT OF THIS DRAWING IS RESERVED BY BIL GROUP LTD. IT IS ISSUED ON CONDITION THAT IT IS NOT REPRODUCED, COPIED, OR DISCLOSED TO A THIRD PARTY EITHER WHOLLY OR IN PART WITHOUT THE CONSENT IN WRITING OF BIL GROUP LTD.



**Description:**  
 BZMM200NYBSWB

Pressed steel swivel castor with a top plate fixing fitted with a white nylon wheel with a roller bearing and total lock brake. Wheel diameter 200mm, tread width 50mm, overall height 235mm, plate size 135mm x 110mm, hole centres 105mm x 80mm. Load capacity 400kg.



	NAME	DATE
DRAWN	Matt	05/03/19
APPROVED BY	Chris	05/03/19
SCALE	1:4	05/03/19
WEIGHT	2.334kg	05/03/19

**BIL** Group Ltd, Porte Marsh Road, Calne  
 Wiltshire, SN11 9BW, United Kingdom  
 Tel +44 (0)1249 822 222 Fax: +44 (0)1249 822 300  
 www.bilgroup.co.uk

TITLE		
<b>BZMM200NYBSWB</b>		
SIZE	DWG NO.	REV
A4	BILCW03BZMM200NYBSWB__02	2
FILE NAME	BILCW03BZMM200NYBSWB__02.PDF SHEET 1 OF 1	

UNLESS OTHERWISE SPECIFIED DIMENSIONS ARE IN MILLIMETRES

Unspecified Tolerances  
 Machining ± 0.25mm  
 Fabrication ± 1mm