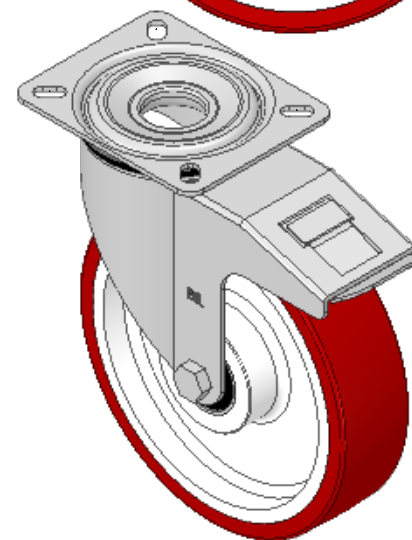
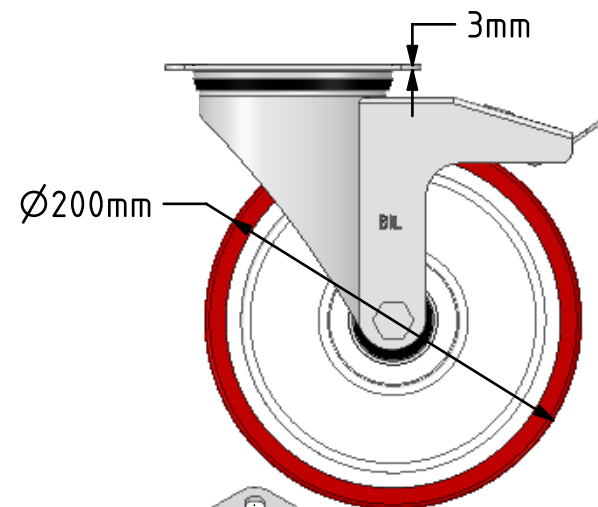
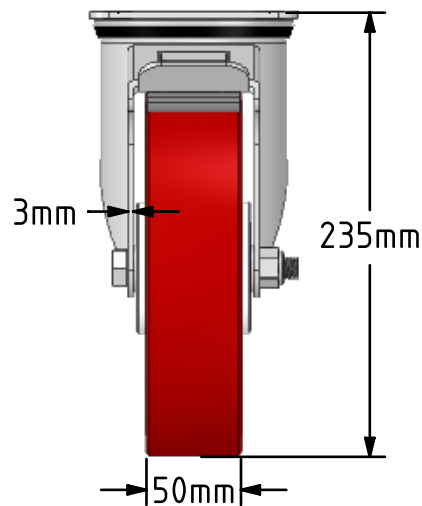
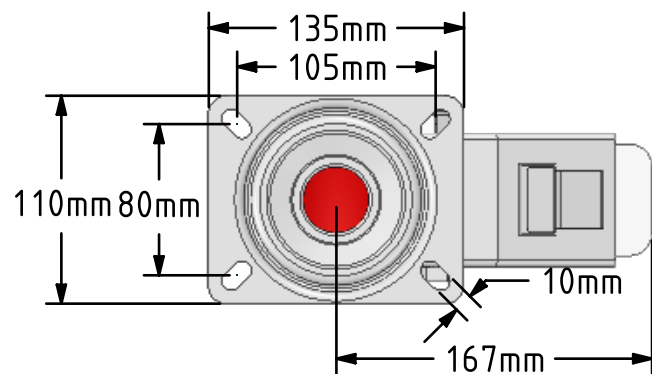


**DRAWING DISCLAIMER**  
 COPYRIGHT OF THIS DRAWING IS RESERVED BY BIL GROUP LTD. IT IS ISSUED ON CONDITION THAT IT IS NOT REPRODUCED, COPIED, OR DISCLOSED TO A THIRD PARTY EITHER WHOLLY OR IN PART WITHOUT THE CONSENT IN WRITING OF BIL GROUP LTD.



**Description:**  
 BZMM200NPBJSWB

Pressed steel swivel castor with a top plate fitted with a red polyurethane tyre on white nylon cantered wheel with ball bearings and a total lock brake, wheel diameter 200mm, tread width 50mm, overall height 235mm, top plate 135mm x 110mm with hole centres 105 x 80mm, with a load capacity of 400kgs.



	NAME	DATE
DRAWN	Matt	05/03/19
APPROVED BY	Tim W	05/03/19
SCALE	1:4	05/03/19
WEIGHT	2.9kg	05/03/19

**BIL** BIL Group Ltd, Porte Marsh Road, Calne  
 Wiltshire, SN11 9BW, United Kingdom  
 Tel +44 (0)1249 822 222 Fax: +44 (0)1249 822 300  
 www.bilgroup.co.uk

TITLE  
**BZMM200NPBJSWB**

UNLESS OTHERWISE SPECIFIED DIMENSIONS ARE IN MILLIMETRES  
 Unspecified Tolerances  
 Machining ± 0.25mm  
 Fabrication ± 1mm

SIZE	DWG NO.	REV
A4	BILCW03BZMM200NPBJSWB__02	2
FILE NAME BILCW03BZMM200NPBJSWB__02.PDF		SHEET 1 OF 1