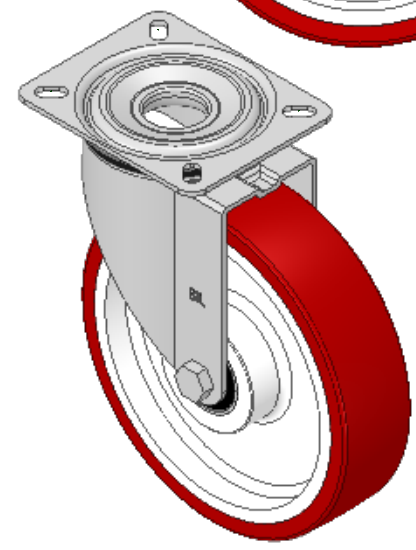
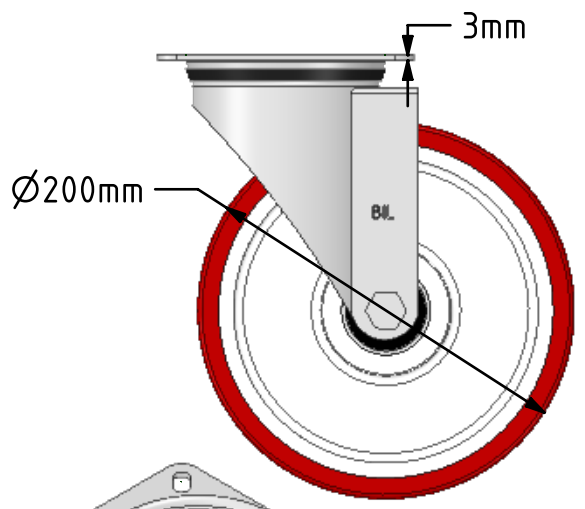
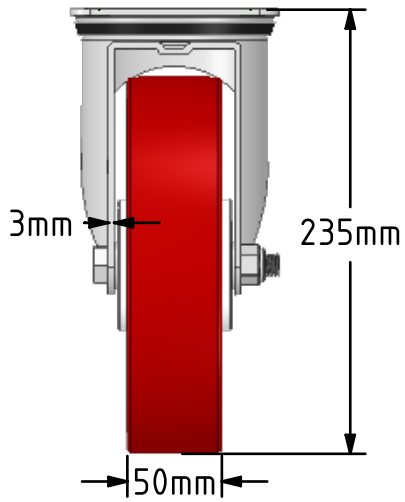
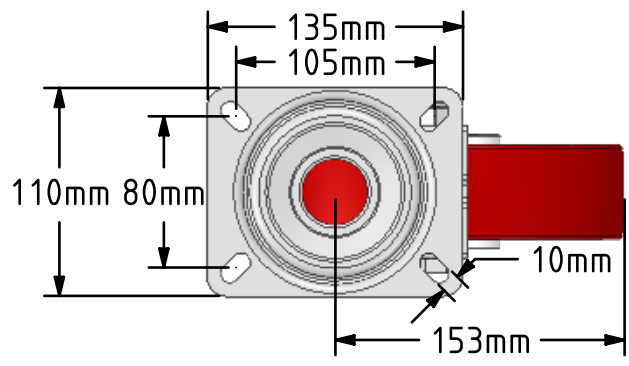
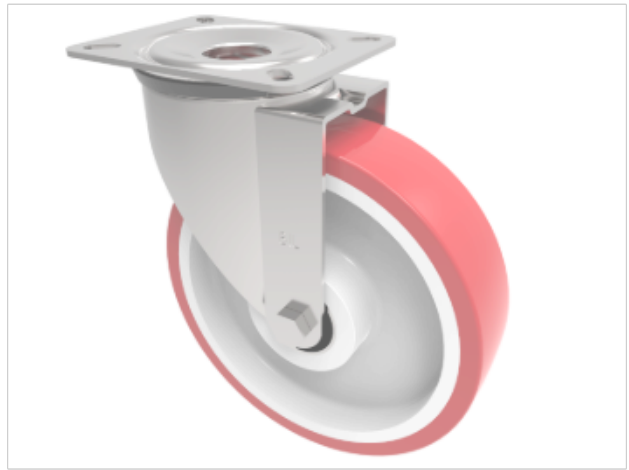



DRAWING DISCLAIMER
 COPYRIGHT OF THIS DRAWING IS RESERVED BY BIL GROUP LTD. IT IS ISSUED ON CONDITION THAT IT IS NOT REPRODUCED, COPIED, OR DISCLOSED TO A THIRD PARTY EITHER WHOLLY OR IN PART WITHOUT THE CONSENT IN WRITING OF BIL GROUP LTD.



Description:
 BZMM200NPBJ

Pressed steel swivel castor with a top plate fitted with a red polyurethane tyre on white nylon centered wheel with ball bearings, wheel diameter 200mm, tread width 50mm, overall height 235mm, top plate 135mm x 110mm with hole centres 105 x 80mm, with a load capacity of 400kgs.



	NAME	DATE	 BIL Group Ltd, Porte Marsh Road, Calne Wiltshire, SN11 9BW, United Kingdom Tel +44 (0)1249 822 222 Fax: +44 (0)1249 822 300 www.bilgroup.co.uk
DRAWN	Matt	05/03/19	
APPROVED BY	Tim W	05/03/19	
SCALE	1:4	05/03/19	
WEIGHT	2.586kg	05/03/19	
UNLESS OTHERWISE SPECIFIED DIMENSIONS ARE IN MILLIMETRES Unspecified Tolerances Machining ± 0.25mm Fabrication ± 1mm			TITLE <p style="text-align: center;">BZMM200NPBJ</p>
SIZE	DWG NO.		REV
A4	BILCW03BZMM200NPBJ_02		2
FILE NAME	BILCW03BZMM200NPBJ_02.PDF		SHEET 1 OF 1