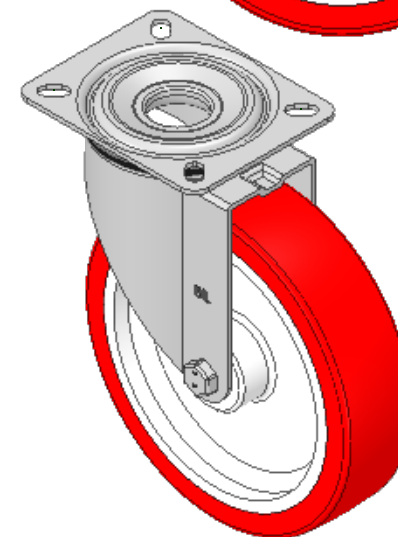
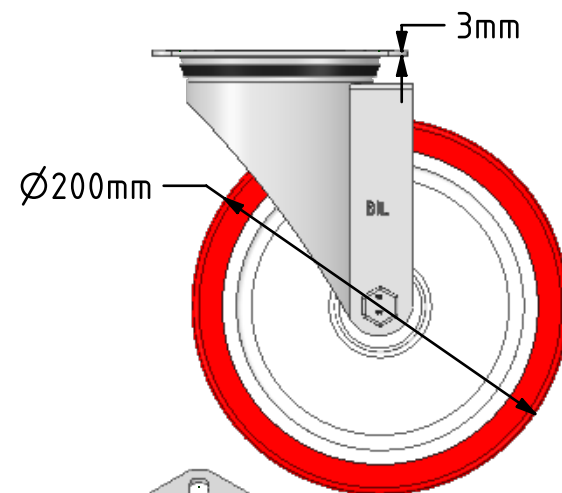
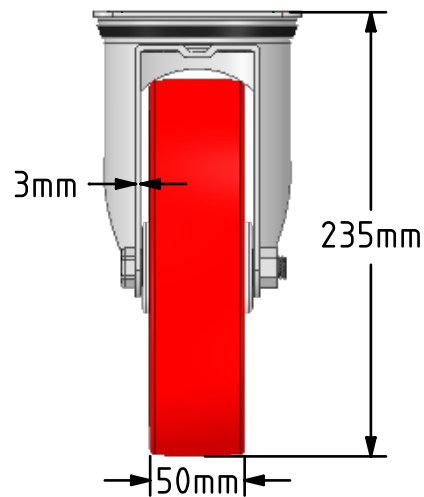
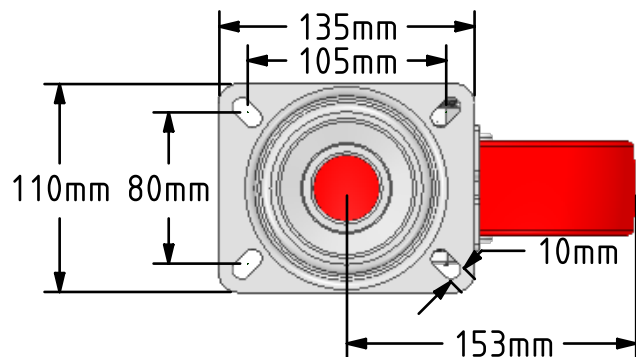


DRAWING DISCLAIMER

COPYRIGHT OF THIS DRAWING IS RESERVED BY BIL GROUP LTD. IT IS ISSUED ON CONDITION THAT IT IS NOT REPRODUCED, COPIED, OR DISCLOSED TO A THIRD PARTY EITHER WHOLLY OR IN PART WITHOUT THE CONSENT IN WRITING OF BIL GROUP LTD.

**Description:**
BZMM200NPB

Pressed steel swivel castor with a top plate fitted with a red polyurethane tyre on white nylon cantered wheel with roller bearings, wheel diameter 200mm, tread width 50mm, overall height 235mm, top plate 135mm x 110mm with hole centres 105 x 80mm, with a load capacity of 400kg.



	NAME	DATE
DRAWN	Matt	05/03/19
APPROVED BY	Tim W	05/03/19
SCALE	1:4	05/03/19
WEIGHT	2.452kg	05/03/19

UNLESS OTHERWISE SPECIFIED DIMENSIONS ARE IN MILLIMETRES

Unspecified Tolerances
Machining $\pm 0.25\text{mm}$
Fabrication $\pm 1\text{mm}$



BIL Group Ltd, Porte Marsh Road, Calne
Wiltshire, SN11 9BW, United Kingdom
Tel +44 (0)1249 822 222 Fax: +44 (0)1249 822 300
www.bilgroup.co.uk

TITLE

BZMM200NPB

SIZE

DWG NO.

A4

BILCW03BZMM200NPB__02

REV

2

FILE NAME

BILCW03BZMM200NPB__02.PDF

SHEET 1 OF 1