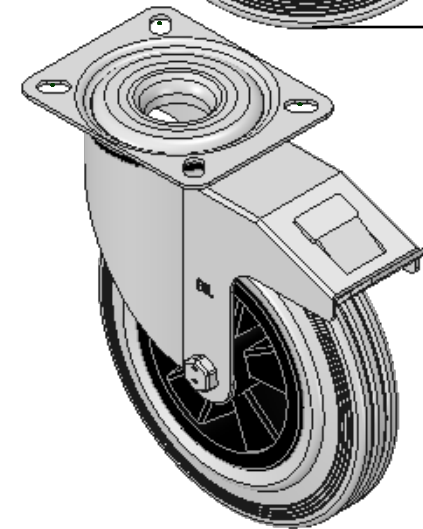
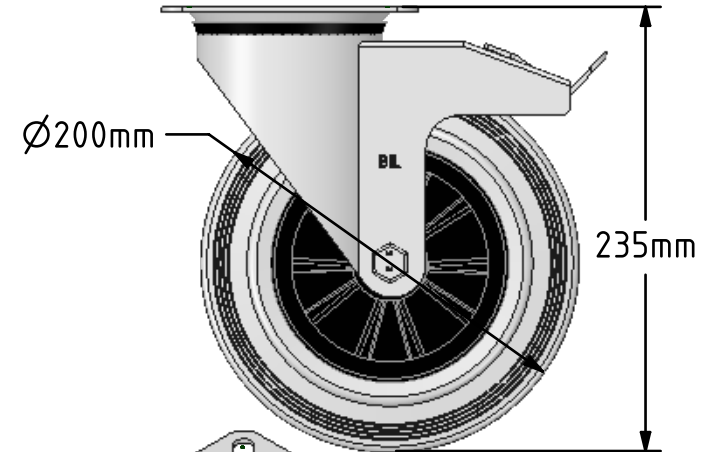
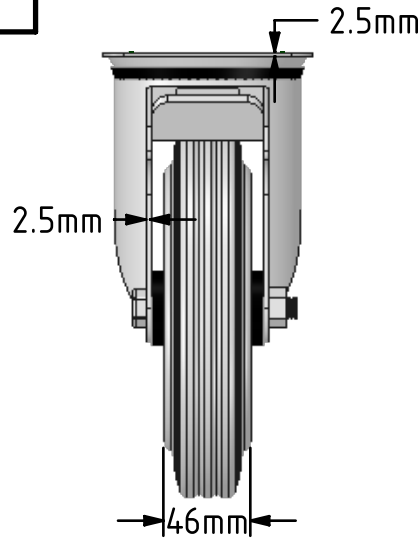
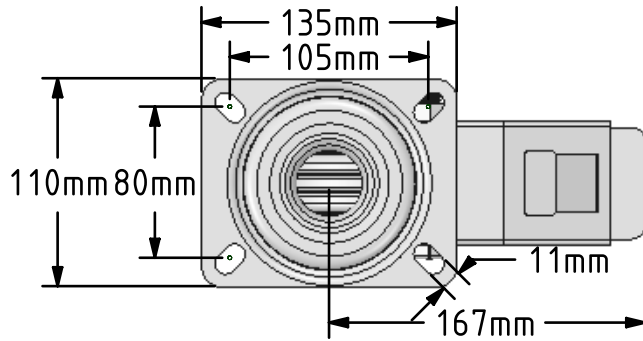


**DRAWING DISCLAIMER**

COPYRIGHT OF THIS DRAWING IS RESERVED BY BIL GROUP LTD. IT IS ISSUED ON CONDITION THAT IT IS NOT REPRODUCED, COPIED, OR DISCLOSED TO A THIRD PARTY EITHER WHOLLY OR IN PART WITHOUT THE CONSENT IN WRITING OF BIL GROUP LTD.




**Description:**

**BZMM200GRBSWB**

Pressed steel swivel castor with a top plate fixing fitted with a grey rubber tyred black polypropylene centred wheel with a roller bearing and total lock brake. Wheel diameter 200mm, tread width 50mm, overall height 235mm, top plate 135mm x 110mm, hole centres 105mm x 80mm. Load capacity 205kg.



	NAME	DATE	BIL Group Ltd, Porte Marsh Road, Calne Wiltshire, SN11 9BW, United Kingdom Tel +44 (0)1249 822 222 Fax: +44 (0)1249 822 300 www.bilgroup.co.uk	
DRAWN	Matt	17/01/18	 <b>TITLE</b> BZMM200GRBSWB	
APPROVED BY	Chris	17/01/18		
SCALE	1:4	17/01/18		
WEIGHT	2.909kg	17/01/18		
UNLESS OTHERWISE SPECIFIED DIMENSIONS ARE IN MILLIMETRES			SIZE	DWG NO.
Unspecified Tolerances Machining ± 0.25mm Fabrication ± 1mm			A4	BILCW03BZMM200GRBSWB_02
			REV	2
			FILE NAME	BILCW03BZMM200GRBSWB_02.PDF SHEET 1 OF 1