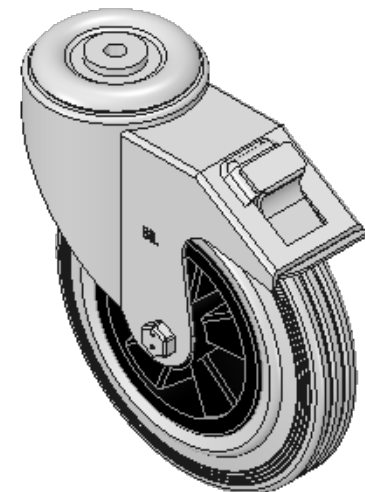
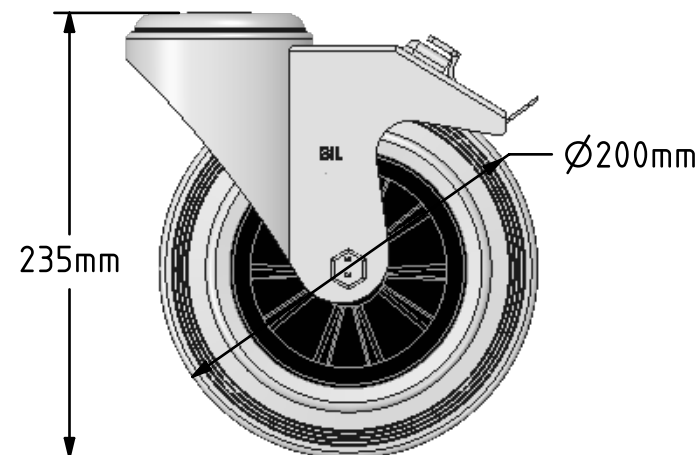
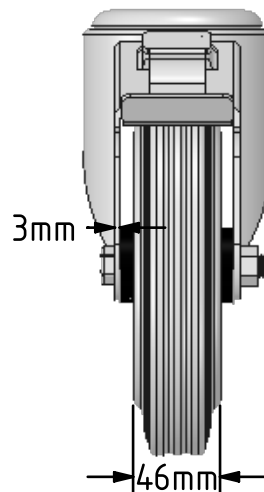
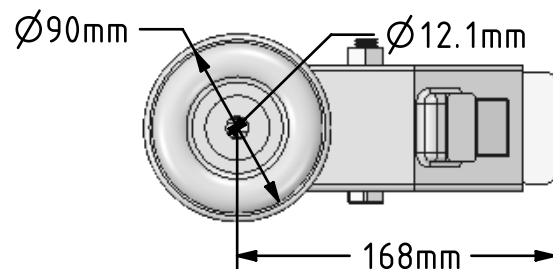


DRAWING DISCLAIMER


COPYRIGHT OF THIS DRAWING IS RESERVED BY BIL GROUP LTD. IT IS ISSUED ON CONDITION THAT IT IS NOT REPRODUCED, COPIED, OR DISCLOSED TO A THIRD PARTY EITHER WHOLLY OR IN PART WITHOUT THE CONSENT IN WRITING OF BIL GROUP LTD.

**Description:**

BZMM200GRBBH12SWB

Pressed steel swivel castor with a 12mm bolt hole fitted with a grey rubber tyred black polypropylene centred wheel with a roller bearing and total lock brake. Wheel diameter 200mm, tread width 50mm, overall height 235mm, Load capacity 205kg.



	NAME	DATE	 BIL Group Ltd, Porte Marsh Road, Calne Wiltshire, SN11 9BW, United Kingdom Tel +44 (0)1249 822 222 Fax: +44 (0)1249 822 300 www.bilgroup.co.uk	
DRAWN	Matt	22/01/18		
APPROVED BY	Chris	22/01/18		
SCALE	1:4	22/01/18		
WEIGHT	3.291kg	22/01/18		
UNLESS OTHERWISE SPECIFIED DIMENSIONS ARE IN MILLIMETRES			TITLE	
Unspecified Tolerances Machining $\pm 0.25\text{mm}$ Fabrication $\pm 1\text{mm}$			BZMM200GRBBH12SWB	
			SIZE	REV
			A4	1
			FILE NAME BILCW03BZMM200GRBBH12SWB_01.PDF SHEET 1 OF 1	