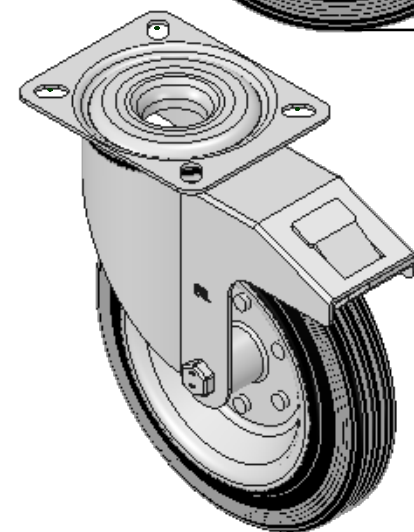
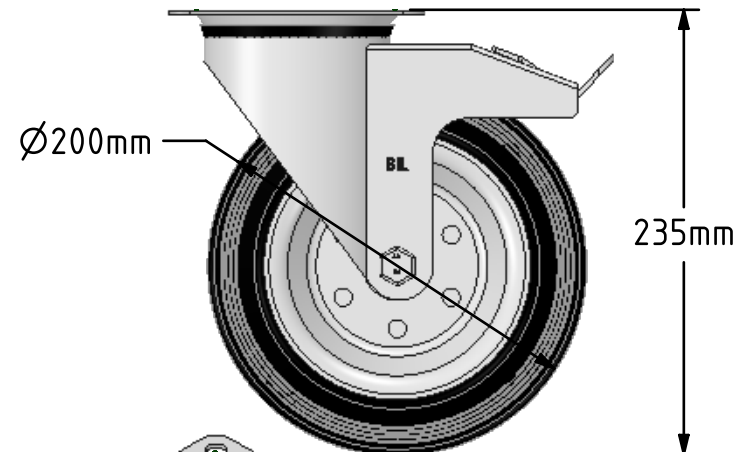
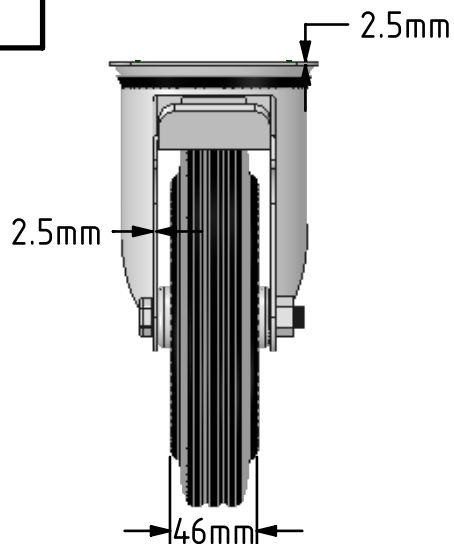
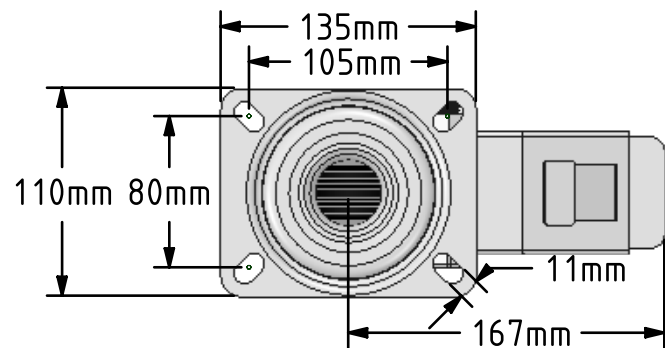



DRAWING DISCLAIMER
 COPYRIGHT OF THIS DRAWING IS RESERVED BY BIL GROUP LTD. IT IS ISSUED ON CONDITION THAT IT IS NOT REPRODUCED, COPIED, OR DISCLOSED TO A THIRD PARTY EITHER WHOLLY OR IN PART WITHOUT THE CONSENT IN WRITING OF BIL GROUP LTD.



Description:
 BZMM200BSBSWB

Pressed steel swivel castor with a top plate fixing fitted with a black rubber wheel on a steel disc centre with a roller bearing and total lock brake. Wheel diameter 200mm, tread width 46mm, overall height 235mm, top plate 135mm x 110mm, hole centres 105mm x 80mm. Load capacity 205kg.



	NAME	DATE	 BIL Group Ltd, Porte Marsh Road, Calne Wiltshire, SN11 9BW, United Kingdom Tel +44 (0)1249 822 222 Fax: +44 (0)1249 822 300 www.bilgroup.co.uk
DRAWN	Matt	12/07/18	
APPROVED BY	Tim W	12/07/18	
SCALE	1:4	12/07/18	
WEIGHT	2.943kg	12/07/18	TITLE
UNLESS OTHERWISE SPECIFIED DIMENSIONS ARE IN MILLIMETRES Unspecified Tolerances Machining ± 0.25mm Fabrication ± 1mm			BZMM200BSBSWB
SIZE		DWG NO.	REV
A4		BILCW03BZMM200BSBSWB_01	1
FILE NAME			SHEET 1 OF 1
BILCW03BZMM200BSBSWB_01.PDF			