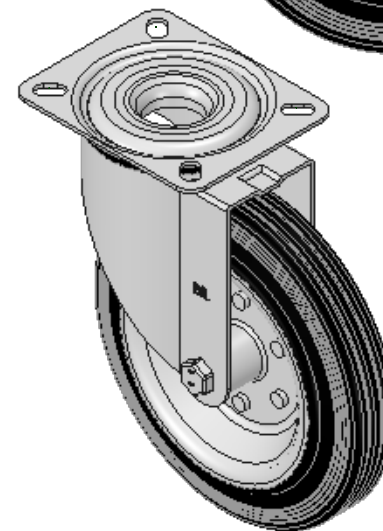
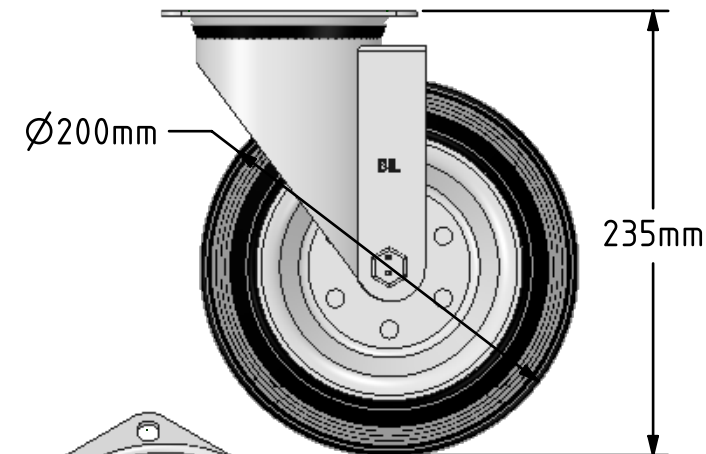
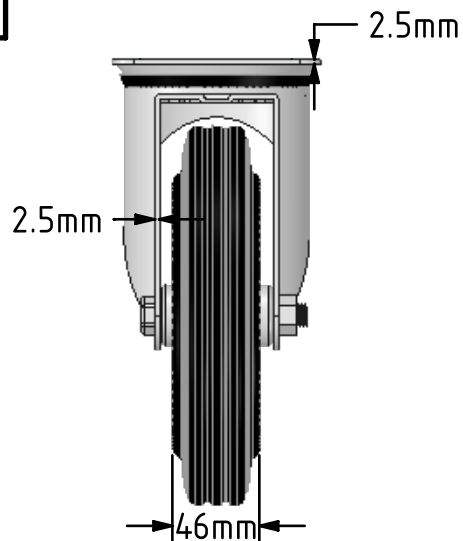
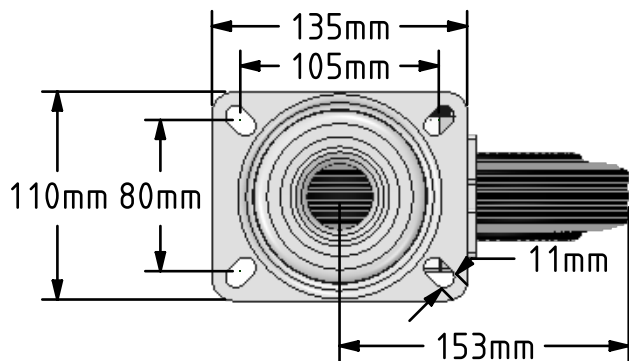



DRAWING DISCLAIMER
 COPYRIGHT OF THIS DRAWING IS RESERVED BY BIL GROUP LTD. IT IS ISSUED ON CONDITION THAT IT IS NOT REPRODUCED, COPIED, OR DISCLOSED TO A THIRD PARTY EITHER WHOLLY OR IN PART WITHOUT THE CONSENT IN WRITING OF BIL GROUP LTD.



Description:
 BZMM200BSB

Pressed steel swivel castor with a top plate fixing fitted with a black rubber wheel on a steel disc centre with a roller bearing. Wheel diameter 200mm, tread width 46mm, overall height 235mm, top plate 135mm x 110mm, hole centres 105mm x 80mm. Load capacity 205kg.



	NAME	DATE	BIL Group Ltd, Porte Marsh Road, Calne Wiltshire, SN11 9BW, United Kingdom Tel +44 (0)1249 822 222 Fax: +44 (0)1249 822 300 www.bilgroup.co.uk	
DRAWN	Matt	17/07/18		
APPROVED BY	Tim W	17/07/18		
SCALE	1:4	17/07/18		
WEIGHT	2.663kg	17/07/18		
UNLESS OTHERWISE SPECIFIED DIMENSIONS ARE IN MILLIMETRES			TITLE	
Unspecified Tolerances Machining ± 0.25mm Fabrication ± 1mm			BZMM200BSB	
SIZE A4		DWG NO. BILCW03BZMM200BSB_02		REV 2
FILE NAME BILCW03BZMM200BSB_02.PDF			SHEET 1 OF 1	