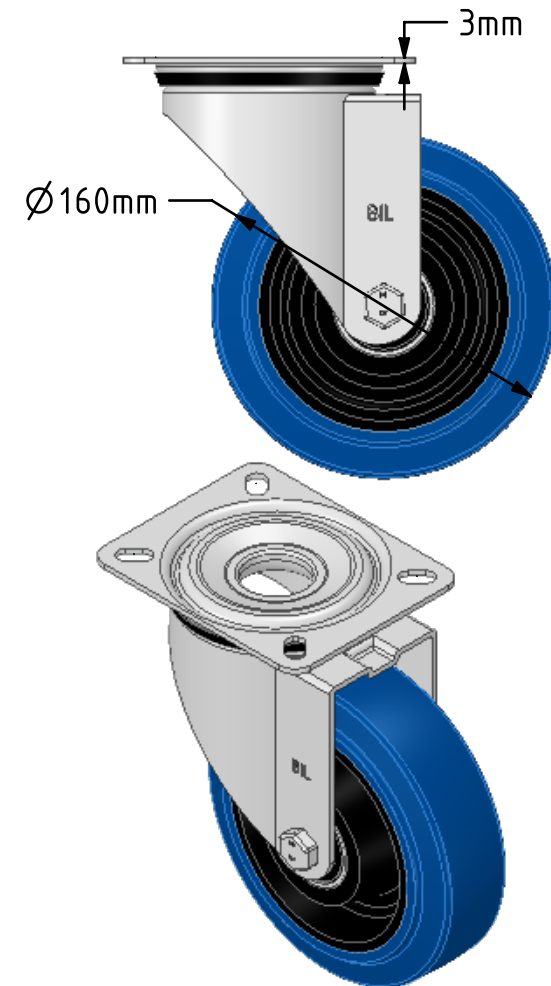
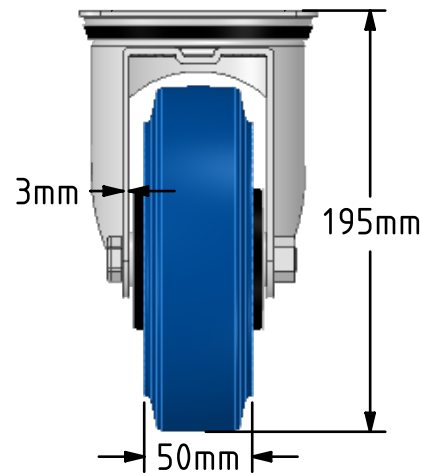
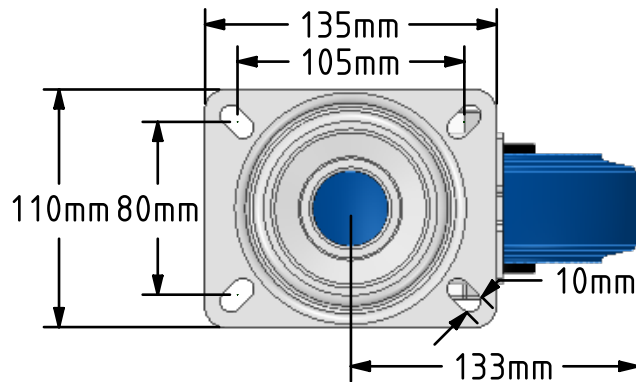


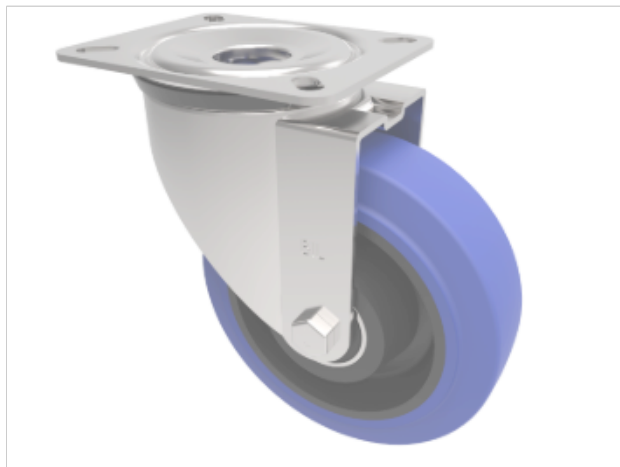
DRAWING DISCLAIMER

COPYRIGHT OF THIS DRAWING IS RESERVED BY BIL GROUP LTD. IT IS ISSUED ON CONDITION THAT IT IS NOT REPRODUCED, COPIED, OR DISCLOSED TO A THIRD PARTY EITHER WHOLLY OR IN PART WITHOUT THE CONSENT IN WRITING OF BIL GROUP LTD.

**Description:**

BZMM160SRNB

Pressed steel swivel castor with a top plate fixing fitted with a blue 65 shore A elastic rubber tyre on a black nylon centred wheel with ball bearings. Wheel diameter 160mm, tread width 50mm, overall height 195mm, top plate 135mm x 110mm, hole centres 105mm x 80mm. Load capacity 400kg.



	NAME	DATE
DRAWN	Matt	05/04/19
APPROVED BY	Tim W	05/04/19
SCALE	2:1	05/04/19
WEIGHT	2.334kg	05/04/19

UNLESS OTHERWISE SPECIFIED DIMENSIONS ARE IN MILLIMETRES

Unspecified Tolerances
Machining $\pm 0.25\text{mm}$
Fabrication $\pm 1\text{mm}$



BIL Group Ltd, Porte Marsh Road, Calne
Wiltshire, SN11 9BW, United Kingdom
Tel +44 (0)1249 822 222 Fax: +44 (0)1249 822 300
www.bilgroup.co.uk

TITLE

BZMM160SRNB

SIZE

DWG NO.

A4

BILCW03BZMM160SRNB__02

REV

2

FILE NAME

BILCW03BZMM160SRNB__02.PDF

SHEET 1 OF 1